

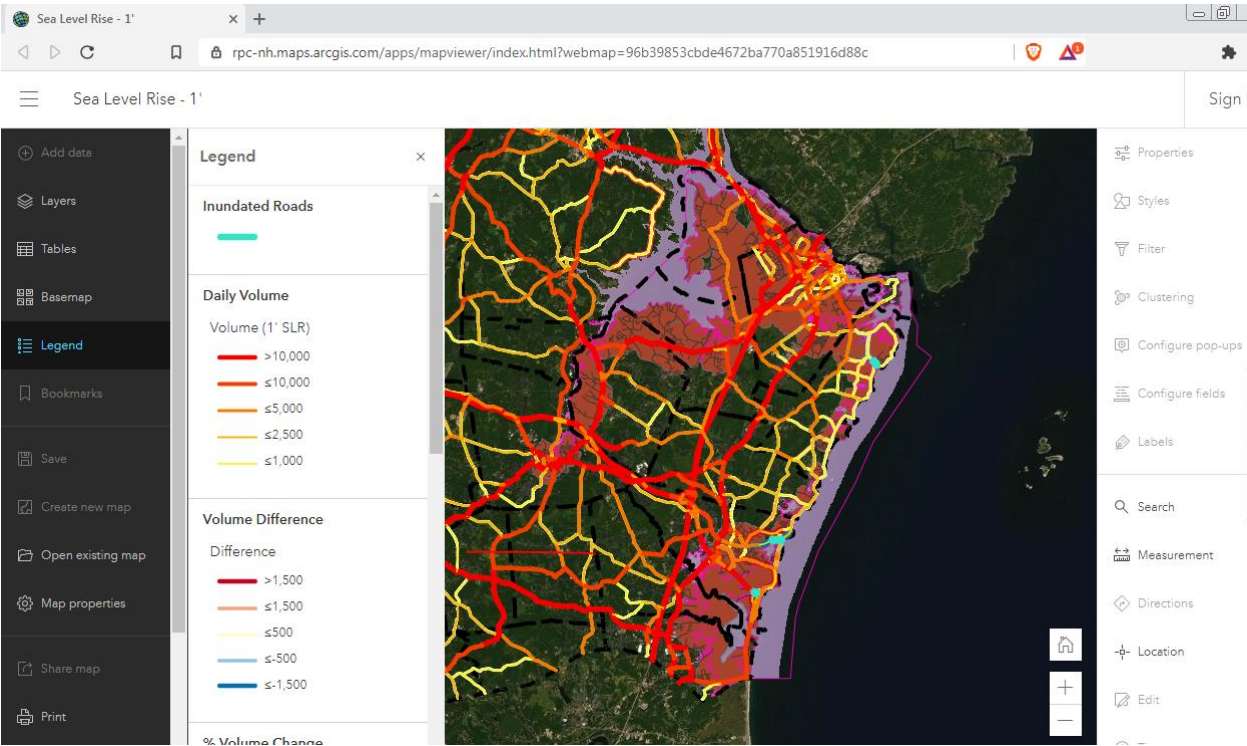
# How to Use the Seacoast Transportation Corridor Vulnerability Assessment Web Maps

<https://www.therpc.org/regional-community-planning/climate-change/STCVA>

**\*\*\*The web maps will only load properly in Mozilla Firefox and Google Chrome\*\*\***

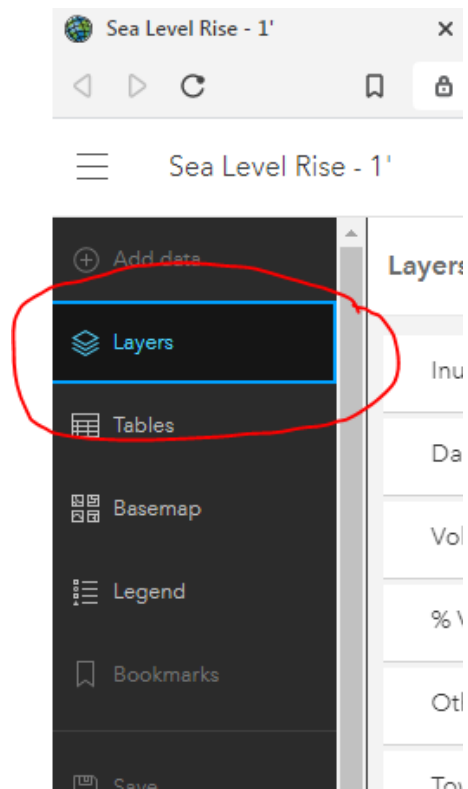
## Initial Screen

After clicking on a web map link you will be brought to the Legend and map. The Legend describes the meaning of the different features in the web map. The web map is completely interactive, you can pan and zoom using your mouse and or the plus and minus buttons in the bottom right of the web map.

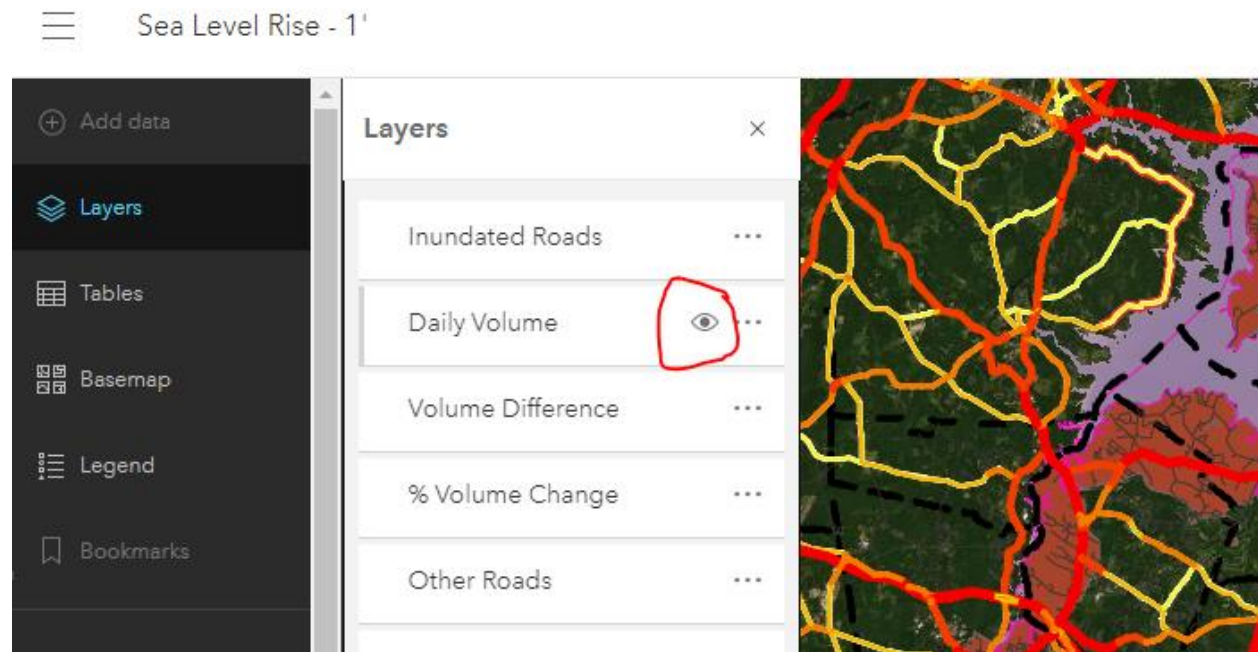


## Layer Management

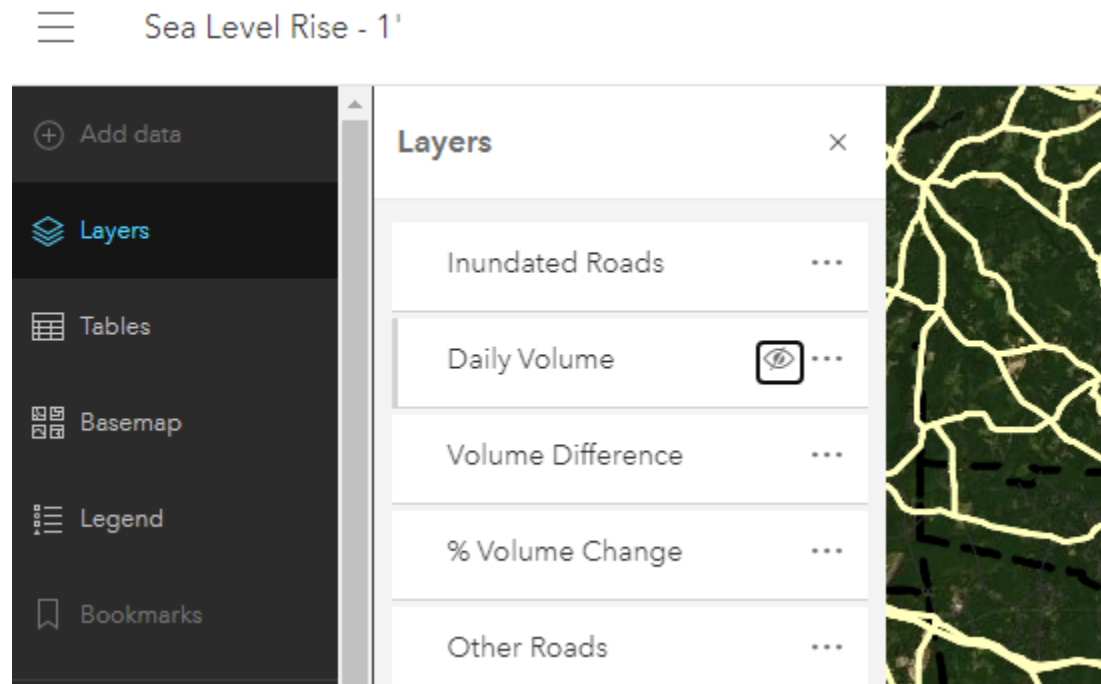
All layers are turned on to begin with. In order to turn layers on and off, click **“Layers”** on the left pane.



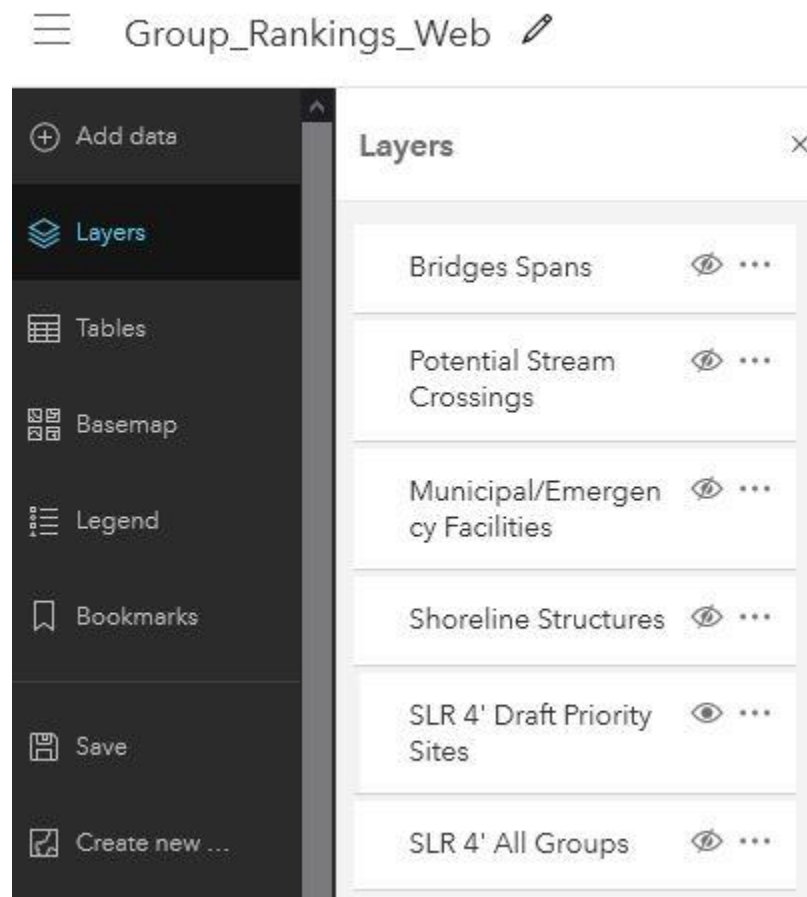
To turn layers on or off hover your mouse on a layer just to the left of the three dots



The eye icon being open means that the layer is turned on. To turn the layer off, click the eye. The eye icon should now have a slash through it. This means that the layer is off.



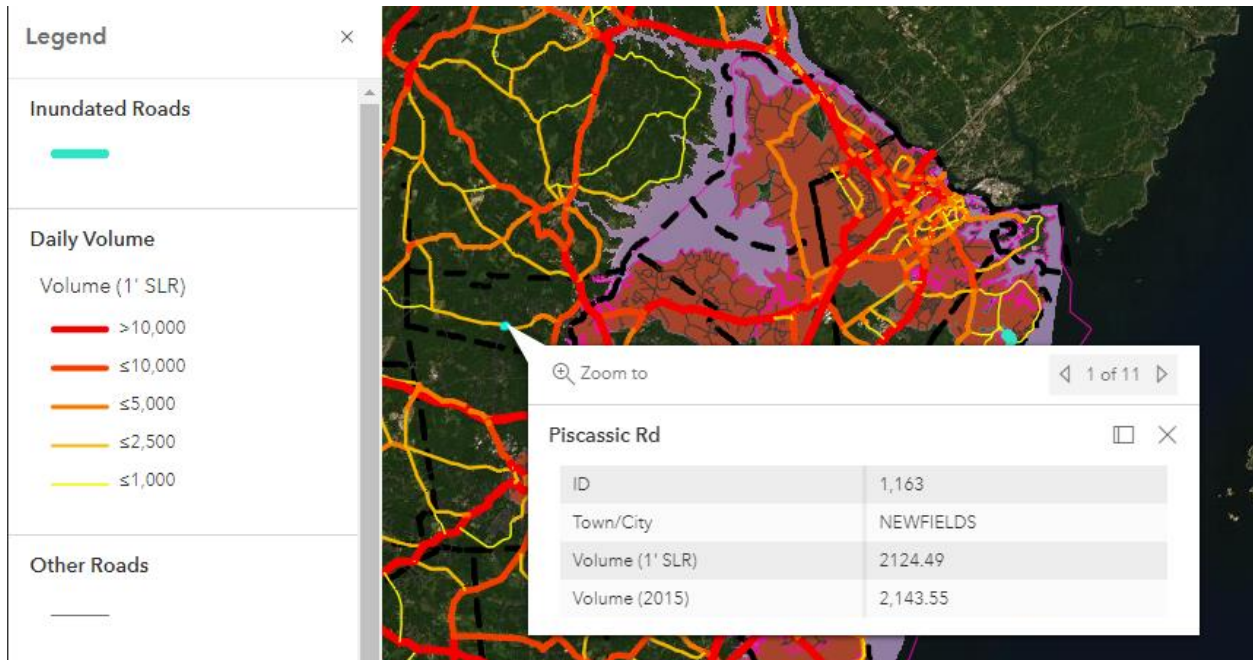
In the 4.0' web map there are two useful layers to toggle: SLR 4' Draft Priority Sites and SLR 4' All Groups. The Draft Priority Sites layer contains the 10 priority sites defined by RPC and the All Groups includes all 24 sites.



## Pop-Ups

You can use your mouse to click on web map features to get additional information in a pop-up. Each layer can be clicked in order to see attribute information.

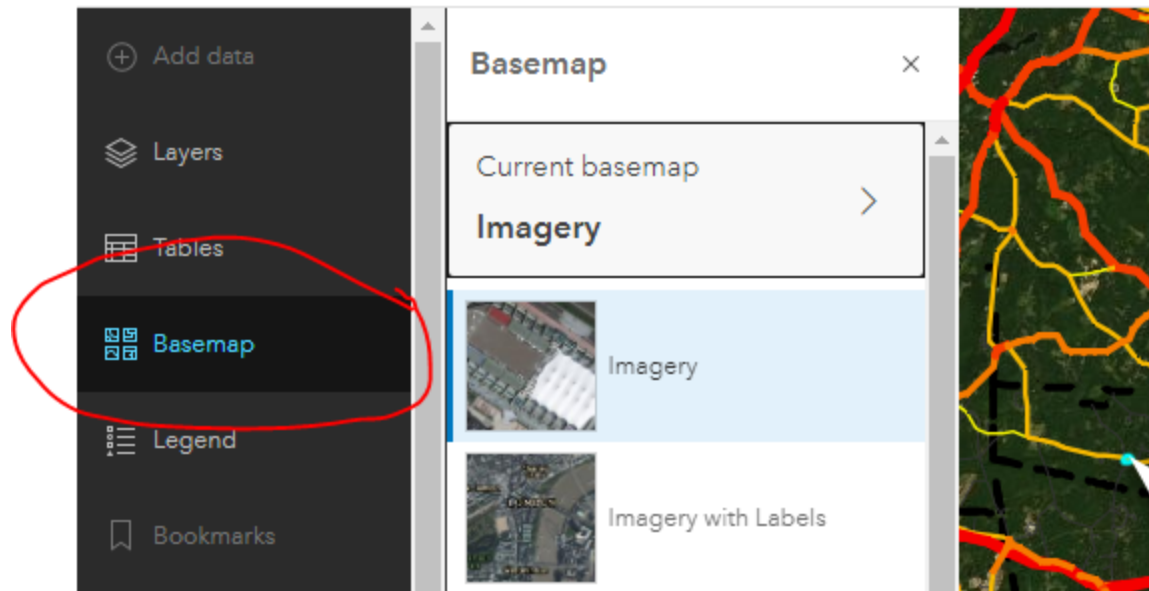
For example, if I keep the Daily Volume layer turned on, and then click a feature, I can see these attributes. For this segment of road I can see the road name, a unique ID, what Town or City the road is in, the daily traffic volume at the respective sea level rise scenario (in this case 1' of sea level rise) and the volume in the 2015 base year.



## Basemap

The default basemap is the most recent high resolution aerial imagery. You can change the basemap by clicking **“Basemap”** on the left pane and selecting a different basemap.

☰ Sea Level Rise - 1'



Additional Tools

There are a number of additional tools at the bottom of the right pane. These include the “**Search**” tool which lets you search for a specific address, the “**Measurement**” tool which allows you to measure distances, and the “**Location**” tool which lets you interact with coordinate information.

