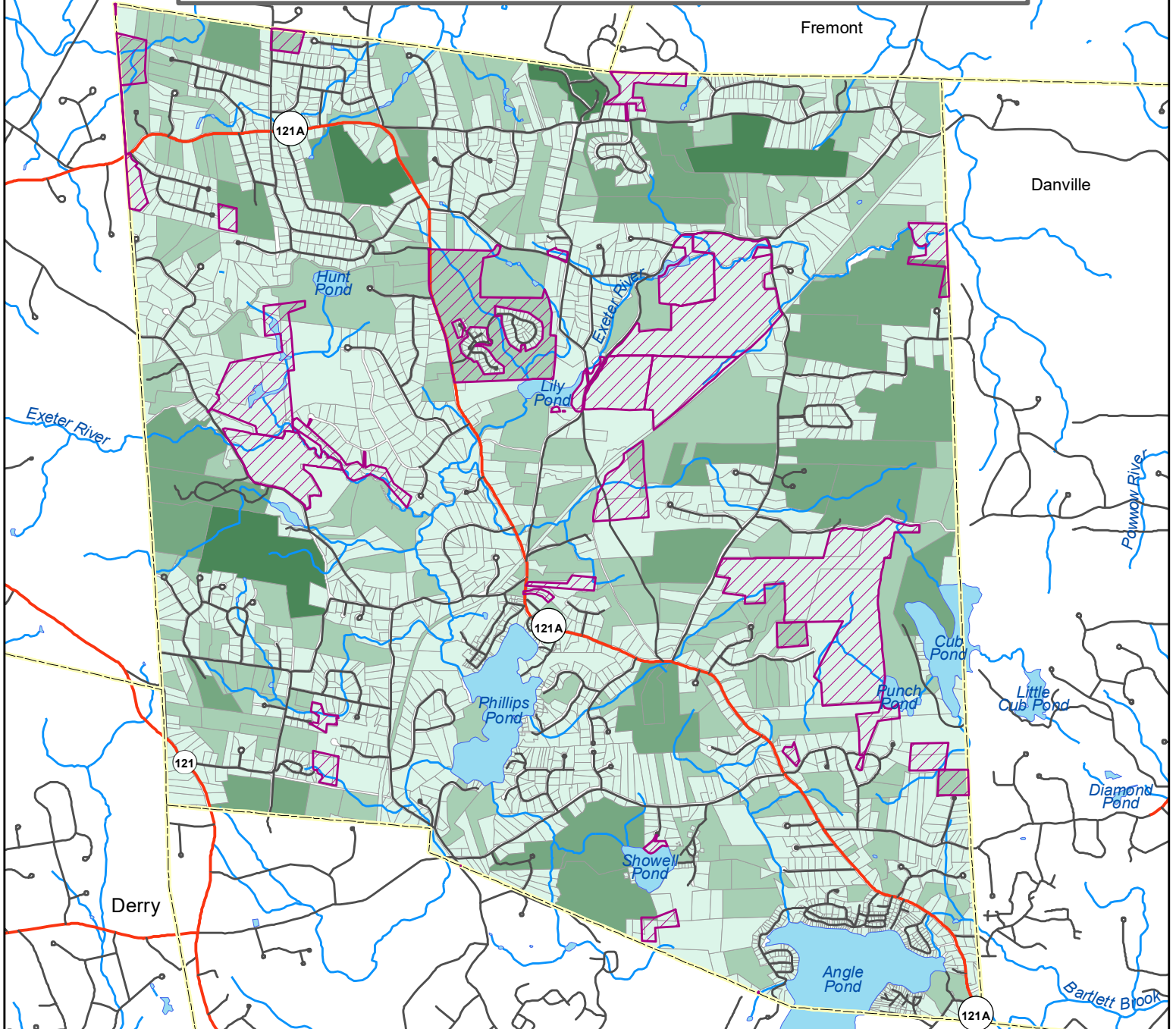


# Pollutant Load Analysis in the Powwow River Watershed Town of Sandown

## Pollutant Load by Parcel: Total Nitrogen

This map displays the results of applying EPA Region I Pollutant Load Export Rates (PLERs) to soils, land use, and impervious cover data, and aggregating the results by parcel.

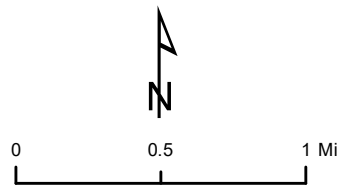


### Nitrogen (lbs/year)

- 0.0 - 10.0
- 10.1 - 40.0
- 40.1 - 100.0
- 100.1 - 225.0
- 225.1 - 2425.0

### Base Map

- ConsLands
- Town Boundaries
- Surface Water
- Road Centerlines
- Federal/State
- Local/Other



Data Sources:  
 Parcels - NH Dept. of Revenue Administration, 2019  
 Soils - Natural Resources Conservation Service, 2018  
 Land Use - Rockingham Planning Commission, 2015  
 Impervious Surfaces - NH GRANIT, 2015  
 Conservation Lands - NH GRANIT, 2018

All data retrieved from the NH GRANIT database.

Funding for this project was provided in part by a Watershed Assistance Grant from the NH Department of Environmental Services with Clean Water Act Section 604(b) funds from the U.S. Environmental Protection Agency.



Total, Town of Sandown: 17,288.4 lbs/year