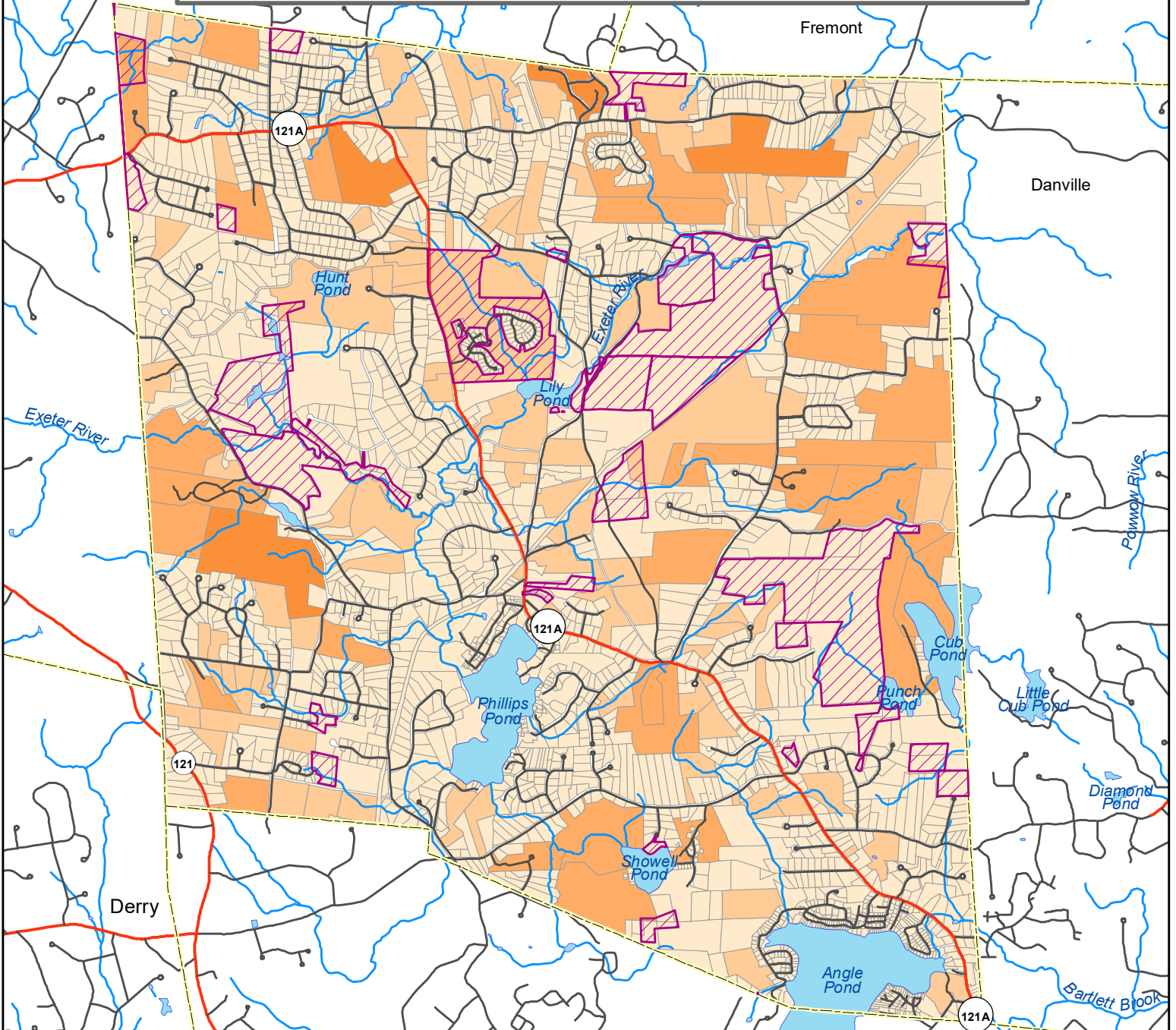


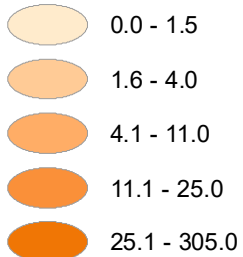
Pollutant Load Analysis in the Powwow River Watershed Town of Sandown

Pollutant Load by Parcel: Total Phosphorus

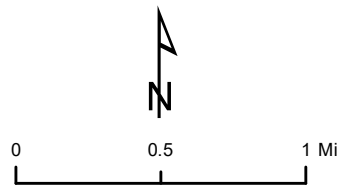
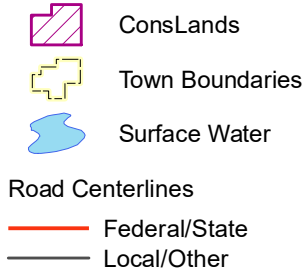
This map displays the results of applying EPA Region I Pollutant Load Export Rates (PLERs) to soils, land use, and impervious cover data, and aggregating the results by parcel.



Phosphorus (lbs/year)



Base Map



Data Sources:
 Parcels - NH Dept. of Revenue Administration, 2019
 Soils - Natural Resources Conservation Service, 2018
 Land Use - Rockingham Planning Commission, 2015
 Impervious Surfaces - NH GRANIT, 2015
 Conservation Lands - NH GRANIT, 2018

All data retrieved from the NH GRANIT database.

Funding for this project was provided in part by a Watershed Assistance Grant from the NH Department of Environmental Services with Clean Water Act Section 604(b) funds from the U.S. Environmental Protection Agency.



Total, Town of Sandown: 1,918.2 lbs/year