

# POWWOW RIVER WATERSHED COLLABORATIVE

IMPROVING WATER QUALITY IN THE POWWOW RIVER WATERSHED



## COLLABORATION ON WATER QUALITY STRATEGIES

The primary goal of the Powwow River Watershed Collaborative is to identify effective strategies to improve water quality and protect existing high quality water and natural resources. To accomplish this, collaboration across municipal boundaries and among watershed stakeholders is key!

## WE NEED YOU ON THE POWWOW RIVER WATERSHED TEAM

The Rockingham Planning Commission (RPC) is launching a new project designed to improve and protect water quality in the Powwow River Watershed. We need you to share your knowledge of existing pollution problems and potential sources of pollution. Representatives are needed from every town in the watershed - Seabrook, Kensington, East Kingston, Kingston, Danville, Sandown, Hampstead, Newton and South Hampton. This collaborative working group will serve as a forum for sharing your knowledge about the watershed with other stakeholders.

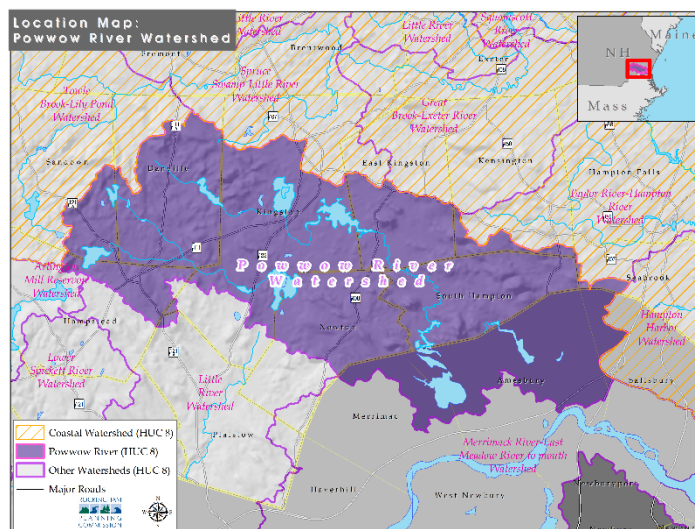
The Powwow River watershed is largely rural and undeveloped and so threats to water quality are not always obvious. Data from the NH Department of Environmental Services indicate there are serious water quality impairments, and a need to gain a better understanding of the sources of water pollution.

## INFORMATION AND TOOLS

RPC will compile information about existing water quality problems, land use, impervious surface cover, and sensitive resources and habitat areas to create a water quality profile of the watershed. Refer to the watershed statistics on the back page.

## DISCUSSION AND DISCOVERY

RPC needs your participation in a working group comprised of municipal officials, residents, and other stakeholders. The working group will work collaboratively with the RPC to on water quality and water resource protection watershed-based planning in the Powwow River watershed to improve impaired waters and protect existing high quality waters. The working group will have a kick-off meeting in October 2017, then meet quarterly through 2018.



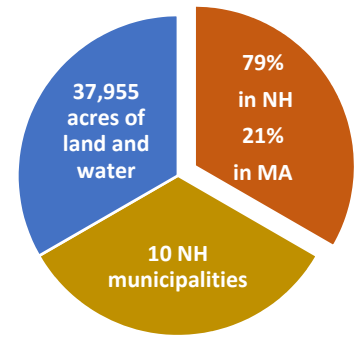
*Funding for this project was provided in part by a Watershed Assistance Grant from the NH Department of Environmental Services with Clean Water Act Section 604(b) funds from the U.S. Environmental Protection Agency.*



# FACTS AND FIGURES ABOUT THE POWWOW RIVER WATERSHED

The Powwow River Watershed contains 37,955 acres of land and water: 30,114 acres (79 percent) in New Hampshire and 7,842 acres (21 percent) in Massachusetts (Merrimac and Amesbury). Ten New Hampshire municipalities are partially or wholly within the watershed: Seabrook, Kensington, East Kingston, Kingston, Danville, Sandown, Hampstead, Newton and South Hampton. South Hampton is the only NH municipality located entirely within the watershed.

Municipality	Total Area (acres)	Acres in Watershed	% Area in Watershed (acres)	Impervious Surface (watershed acres)
Danville	7,569	5,575	73%	325 / 5.8%
East Kingston	6,381	3,144	49%	132 / 4.2%
Hampstead	9,014	1,581	17%	NA
Kensington	7,668	699	9%	19 / 2.7%
Kingston	13,450	7,836	58%	434 / 5.5%
Newton	6,365	4,244	67%	NA
Plaistow	6,790	77	1%	NA
Sandown	9,232	1,583	17%	83 / 5.2%
Seabrook	6,161	228	4%	32 / 14.0%
South Hampton	5,147	5,147	100%	NA



Note: NA = Impervious surface data not available

Land Conservation Plan for the Merrimack River Watershed of New Hampshire and Massachusetts (2014)			
Resource Category	Total Acres	Acres in NH	Acres in MA
Tier 1 – Highest value	6,303	6,020 (96%)	283
Tier 2 – Higher value	16,242	14,569 (90%)	1,673
Tier 3 – High value	9,085	8,071 (89%)	1,014
Total Acres	31,630	28,661 (91%)	2,970

Source: Land Conservation Plan for the Merrimack River Watershed of New Hampshire and Massachusetts (2014) available on the Society for Protection of New Hampshire Forests website at

<https://forestsociety.org/sites/default/files/Merrimack%20Plan%20Executive%20Summary%20FINAL%20April%20202014.pdf>

Resource Category	Acres in Watershed-NH	% Total Watershed-NH
Freshwater Wetlands	6,997	23%
Forested	13,285	44%
Stratified Drift Aquifer	8,911	30%
Surface Water	1,570	5%
Agricultural Soils (total)	9,651	32%
Farmland of Statewide Importance	3,796	13%
Farmland of Local Importance	4,349	14%
Prime Farmland	1,506	5%
NH Wildlife Action Plan	Acres in Watershed-NH	% Total Watershed-NH
Tier 1 – Highest	3,928	13%
Tier 2 - Higher	4,884	16%
Tier3 - High	7,210	24%
Total Acres	16,022	53%
Land Use Category	Acres in Watershed-NH	% Total Watershed-NH
Undeveloped Lands	16,157	54%
Developed Lands	13,957	46%

Coming soon to the RPC website - a map set showing the occurrence of land cover and resources in the watershed.