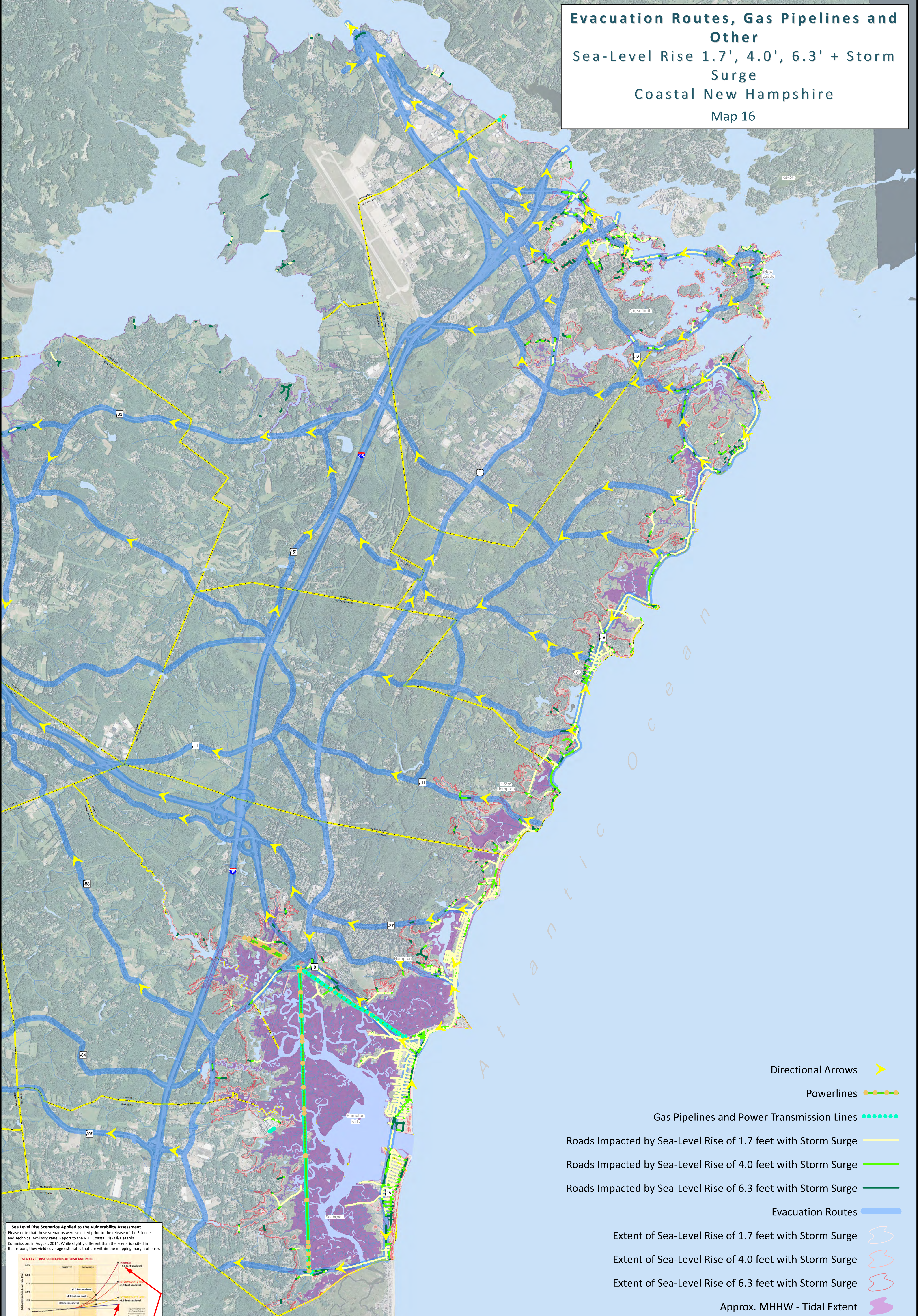


# Evacuation Routes, Gas Pipelines and Other Sea-Level Rise 1.7', 4.0', 6.3' + Storm Surge Coastal New Hampshire Map 16



Directional Arrows

Powerlines

Gas Pipelines and Power Transmission Lines

Roads Impacted by Sea-Level Rise of 1.7 feet with Storm Surge

Roads Impacted by Sea-Level Rise of 4.0 feet with Storm Surge

Roads Impacted by Sea-Level Rise of 6.3 feet with Storm Surge

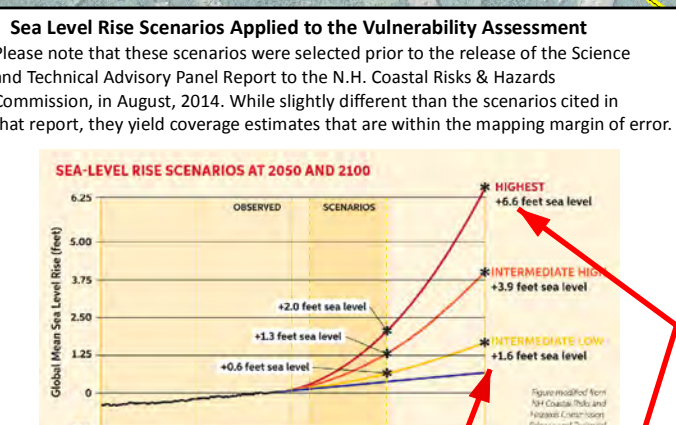
Evacuation Routes

Extent of Sea-Level Rise of 1.7 feet with Storm Surge

Extent of Sea-Level Rise of 4.0 feet with Storm Surge

Extent of Sea-Level Rise of 6.3 feet with Storm Surge

Approx. MHHW - Tidal Extent



**TIDES TO STORMS**  
Preparing For New Hampshire's Future Coast

ROCKINGHAM PLANNING COMMISSION

The Tides to Storms project is funded by New Hampshire Homeland Security and Emergency Management (HSEM) through a Pre-Disaster Mitigation Grant from the Federal Emergency Management Agency (FEMA).

Additional funding, support and data provided by the U.S. Department of Transportation, Federal Highway Administration, New Hampshire Department of Transportation and New Hampshire GRANIT-Earth Systems Research Center, University of New Hampshire.

FEMA NH GRANIT DOT

**Map Key**

- Major Roads
- Local Roads
- Town Boundaries
- Waterbodies
- Approx. MHHW - Tidal Extent
- 2014 NAIP 1 Meter Aerial Photo

0 0.25 0.5 1 1.5 2 Miles

Wake CP, Kirshen P, Huber M, Knuuti K, and Stampone M (2011) Sea-Level Rise, Storm Surges, and Extreme Precipitation in Coastal New Hampshire: Analysis of Past and Projected Future Trends, prepared by the Science and Technical Advisory Panel for the New Hampshire Coastal Risks and Hazards Commission.

Wake CP, E Burakowski, E Kelsey, K Hayhoe, A Stoner, C Watson, E Douglas (2011) Climate Change in the Piscataqua/Great Bay Region: Past, Present, and Future Carbon Solutions New England Report for the Great Bay (New Hampshire) Stewards.