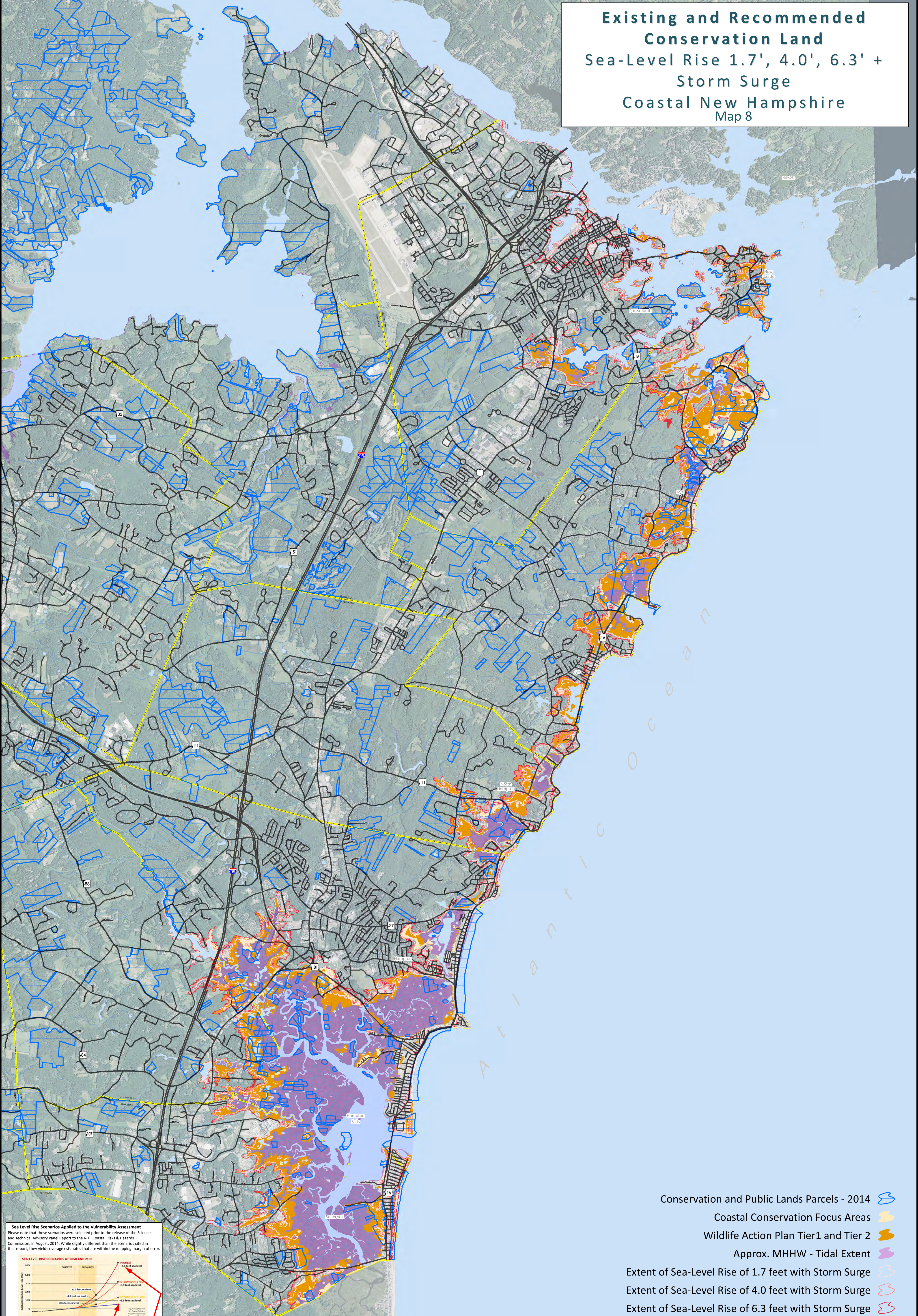


Existing and Recommended Conservation Land

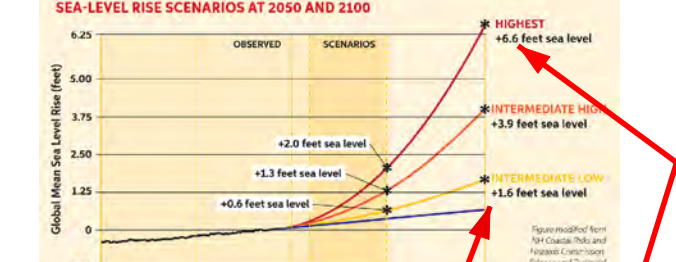
Sea-Level Rise 1.7', 4.0', 6.3' + Storm Surge

Coastal New Hampshire

Map 8



Sea Level Rise Scenarios Applied to the Vulnerability Assessment
 Please note that these scenarios were selected prior to the release of the Science and Technical Advisory Panel Report to the N.H. Coastal Risks & Hazards Commission, in August, 2014. While slightly different than the scenarios cited in that report, they yield coverage estimates that are within the mapping margin of error.



Wake CP, Kirshen P, Huber M, Knutti K, and Stamponone M (2011) Sea-level Rise, Storm Surges, and Extreme Precipitation in Coastal New Hampshire: Analysis of Past and Projected Future Trends, prepared by the Science and Technical Advisory Panel for the New Hampshire Coastal Risks and Hazards Commission.

	2014	2030	2050	2070	2090
Current Elevation of ASL (FEET)	4.4	4.4	4.4	4.4	4.4
Sea Level Rise (FEET)	0.0	0.8	2.5	4.0	6.3
Sea Level Elevation (FEET)	4.4	5.2	6.9	8.4	10.7

Additional funding, support and data provided by the U.S. Department of Transportation, Federal Highway Administration, New Hampshire Department of Transportation and New Hampshire GRANIT-Earth Systems Research Center, University of New Hampshire.

TIDES TO STORMS
 Preparing For New Hampshire's Future Coast

ROCKINGHAM PLANNING COMMISSION

The Tides to Storms project is funded by New Hampshire Homeland Security and Emergency Management (HSEM) through a Pre-Disaster Mitigation Grant from the Federal Emergency Management Agency (FEMA).

Additional funding, support and data provided by the U.S. Department of Transportation, Federal Highway Administration, New Hampshire Department of Transportation and New Hampshire GRANIT-Earth Systems Research Center, University of New Hampshire.

- Conservation and Public Lands Parcels - 2014
- Coastal Conservation Focus Areas
- Wildlife Action Plan Tier1 and Tier 2
- Approx. MHHW - Tidal Extent
- Extent of Sea-Level Rise of 1.7 feet with Storm Surge
- Extent of Sea-Level Rise of 4.0 feet with Storm Surge
- Extent of Sea-Level Rise of 6.3 feet with Storm Surge

Map Key

- Major Roads
- Waterbodies
- Local Roads
- Approx. MHHW - Tidal Extent
- Town Boundaries
- 2014 NAIP 1 Meter Aerial Photo

0 0.25 0.5 1 1.5 2 Miles