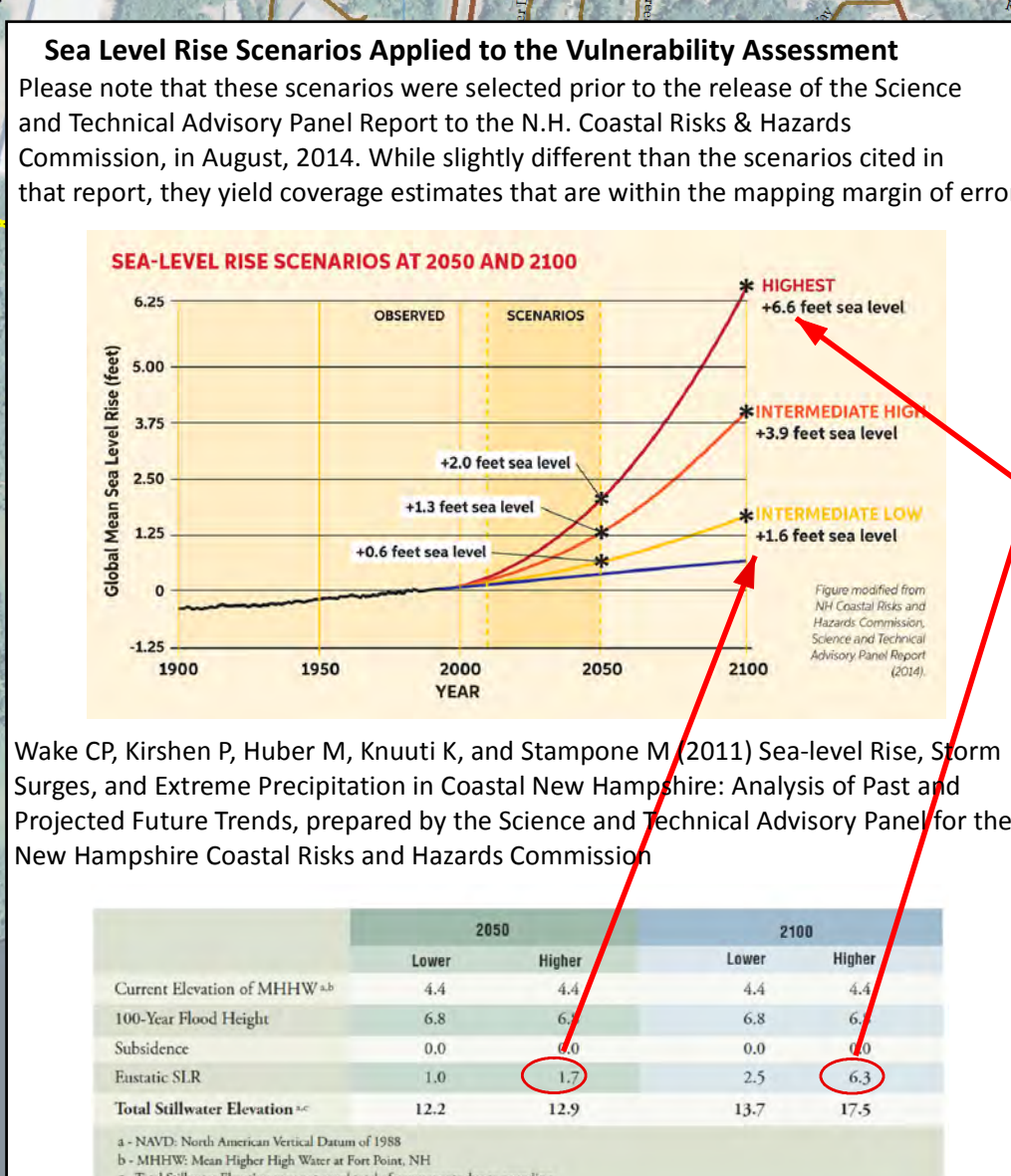
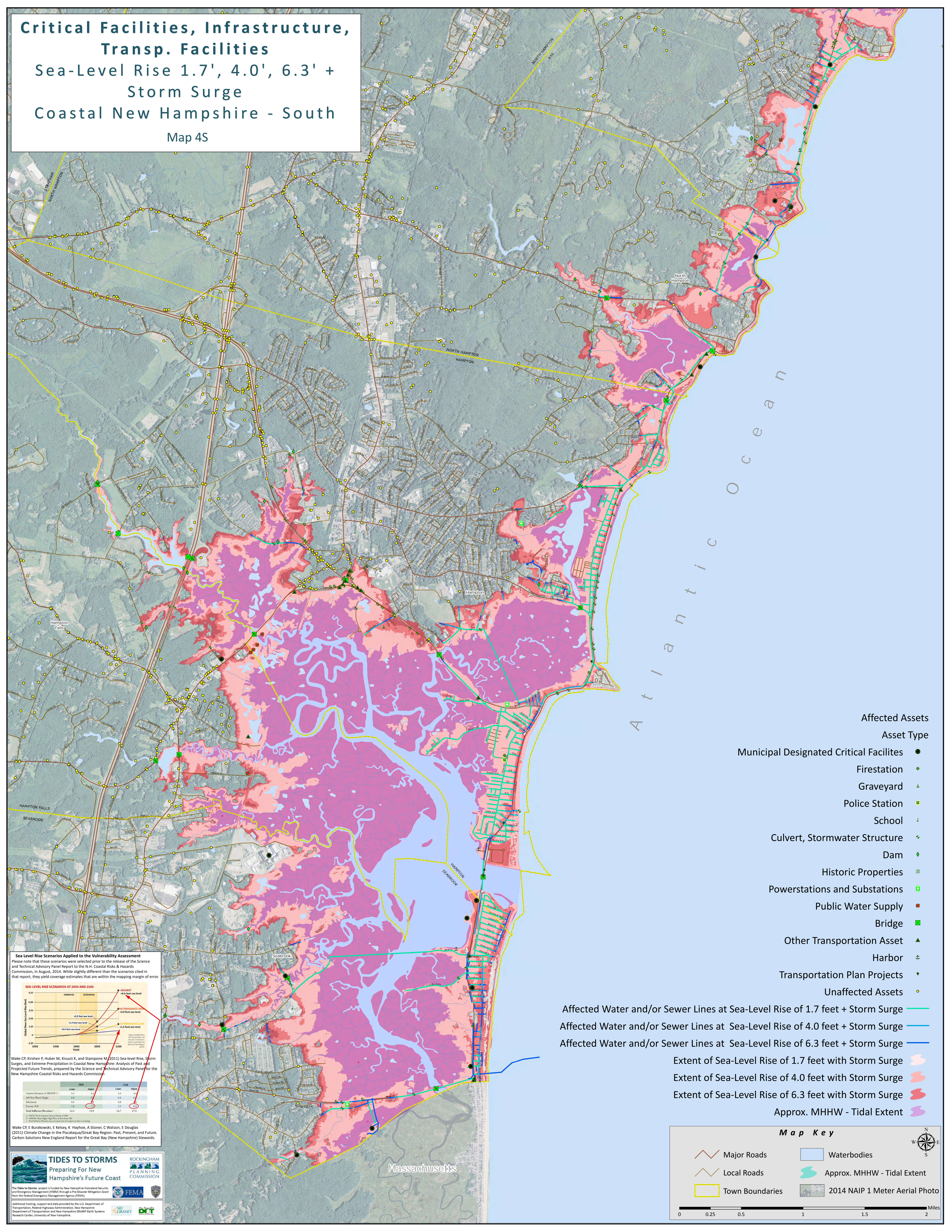


Critical Facilities, Infrastructure, Transp. Facilities

Sea-Level Rise 1.7', 4.0', 6.3' + Storm Surge

Coastal New Hampshire - South

Map 4S



- Affected Assets**
- Asset Type**
- Municipal Designated Critical Facilities ●
 - Firestation ●
 - Graveyard ▲
 - Police Station ■
 - School ▲
 - Culvert, Stormwater Structure ▲
 - Dam ▲
 - Historic Properties ▲
 - Powerstations and Substations ■
 - Public Water Supply ■
 - Bridge ■
 - Other Transportation Asset ▲
 - Harbor ▲
 - Transportation Plan Projects ●
 - Unaffected Assets ●
- Affected Water and/or Sewer Lines at Sea-Level Rise of 1.7 feet + Storm Surge
- Affected Water and/or Sewer Lines at Sea-Level Rise of 4.0 feet + Storm Surge
- Affected Water and/or Sewer Lines at Sea-Level Rise of 6.3 feet + Storm Surge
- Extent of Sea-Level Rise of 1.7 feet with Storm Surge
- Extent of Sea-Level Rise of 4.0 feet with Storm Surge
- Extent of Sea-Level Rise of 6.3 feet with Storm Surge
- Approx. MHHW - Tidal Extent

Map Key

- Major Roads
- Local Roads
- Town Boundaries
- Waterbodies
- Approx. MHHW - Tidal Extent
- 2014 NAIP 1 Meter Aerial Photo

Miles: 0, 0.25, 0.5, 1, 1.5, 2

TIDES TO STORMS
 Preparing For New Hampshire's Future Coast

ROCKINGHAM PLANNING COMMISSION

FEMA

NH GRANIT

DOT

The Tides to Storms project is funded by New Hampshire Homeland Security and Emergency Management (NHSEM) through a Pre-Disaster Mitigation Grant from the Federal Emergency Management Agency (FEMA).

Additional funding, support and data provided by the U.S. Department of Transportation, Federal Highway Administration, New Hampshire Department of Transportation and New Hampshire GRANIT/Earth Systems Research Center, University of New Hampshire.