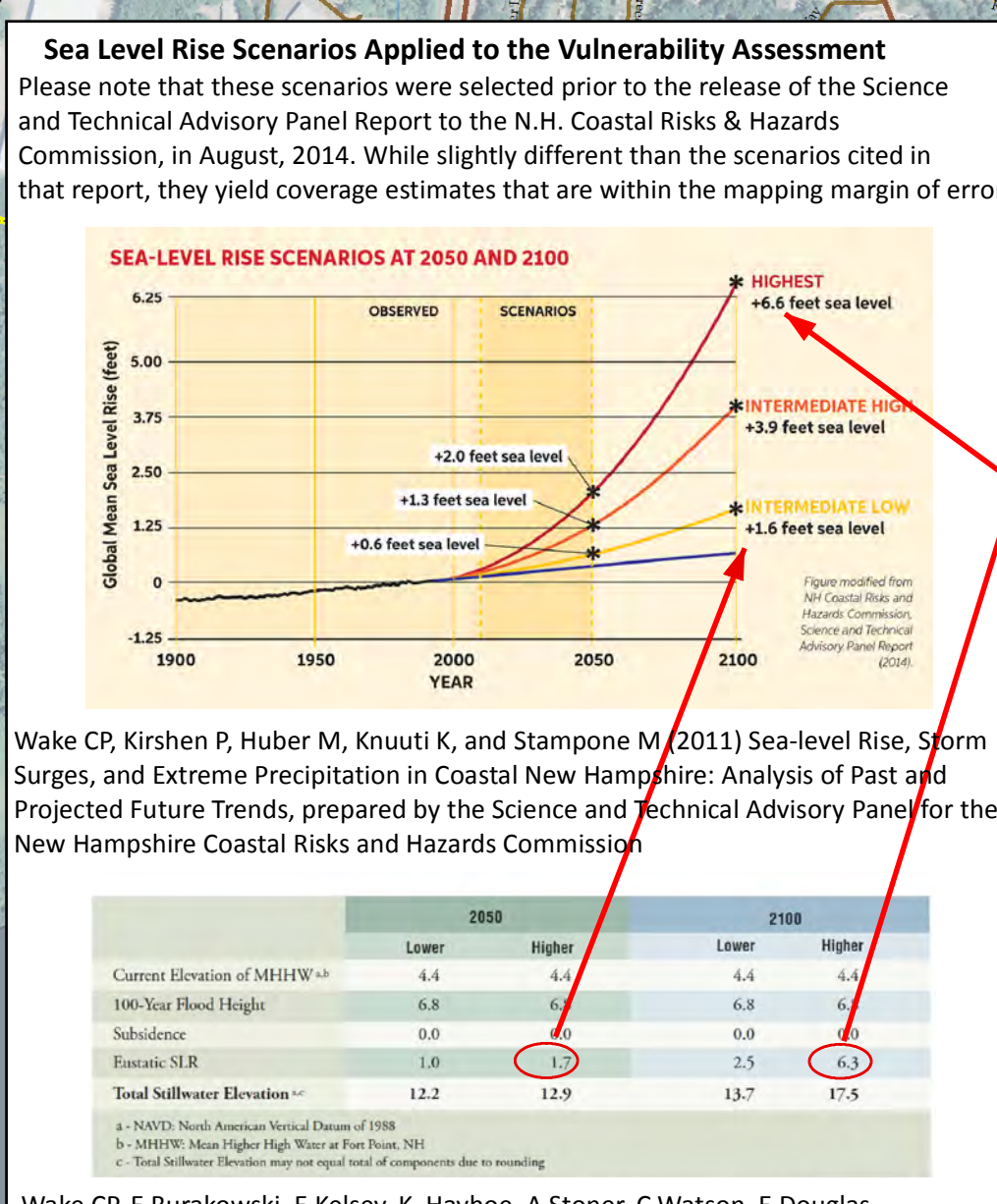
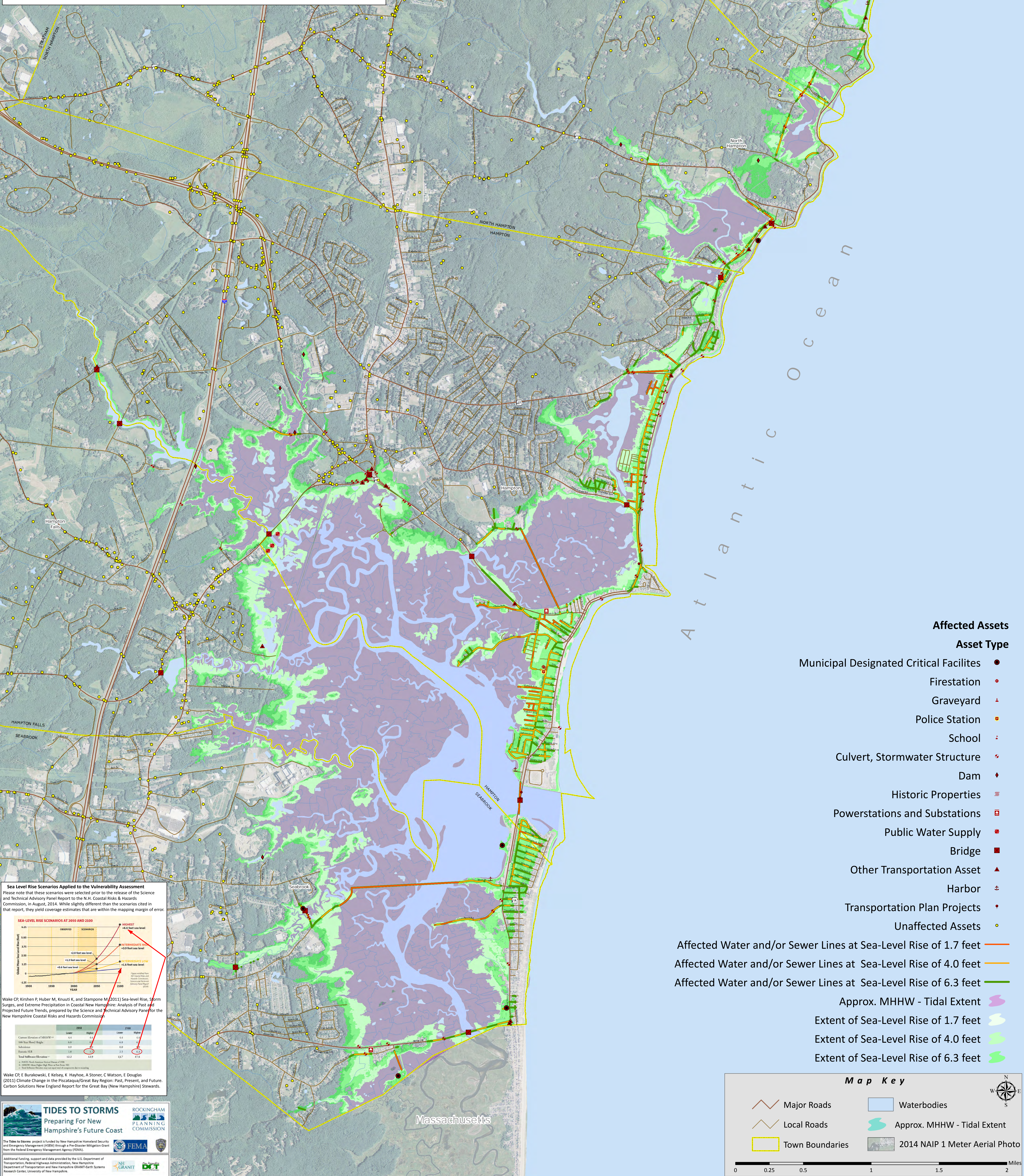


Critical Facilities, Infrastructure, Transp. Facilities

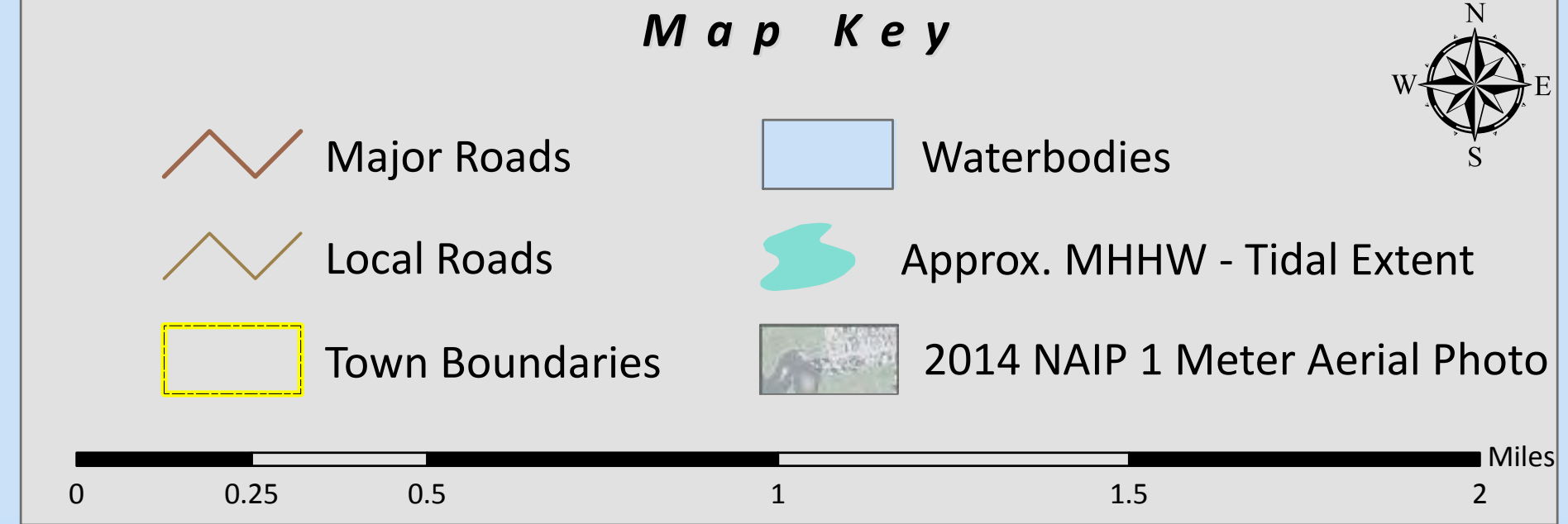
Sea-Level Rise 1.7', 4.0', 6.3'

Coastal New Hampshire - South

Map 3S



- Affected Assets**
- Asset Type**
- Municipal Designated Critical Facilities ●
 - Firestation ●
 - Graveyard ▲
 - Police Station ●
 - School ●
 - Culvert, Stormwater Structure ●
 - Dam ◆
 - Historic Properties ■
 - Powerstations and Substations ■
 - Public Water Supply ■
 - Bridge ■
 - Other Transportation Asset ▲
 - Harbor ▲
 - Transportation Plan Projects ●
 - Unaffected Assets ●
- Affected Water and/or Sewer Lines at Sea-Level Rise of 1.7 feet
- Affected Water and/or Sewer Lines at Sea-Level Rise of 4.0 feet
- Affected Water and/or Sewer Lines at Sea-Level Rise of 6.3 feet
- Approx. MHHW - Tidal Extent
- Extent of Sea-Level Rise of 1.7 feet
- Extent of Sea-Level Rise of 4.0 feet
- Extent of Sea-Level Rise of 6.3 feet



TIDES TO STORMS
 Preparing For New Hampshire's Future Coast

ROCKINGHAM PLANNING COMMISSION

FEMA

NH GRANIT

DOT

The Tides to Storms project is funded by New Hampshire Homeland Security and Emergency Management (NHSEM) through a Pre-Disaster Mitigation Grant from the Federal Emergency Management Agency (FEMA).

Additional funding, support and data provided by the U.S. Department of Transportation, Federal Highway Administration, New Hampshire Department of Transportation and New Hampshire GRANIT/Earth Systems Research Center, University of New Hampshire.