



The Climate Risk in the Seacoast: Assessing Vulnerability of Municipal Assets and Resources to Climate Change (C-RiSe) project provides maps and assessments of flood impacts to infrastructure and natural resources in the coastal Great Bay region associated with projected increases in storm surge, sea level, and precipitation.

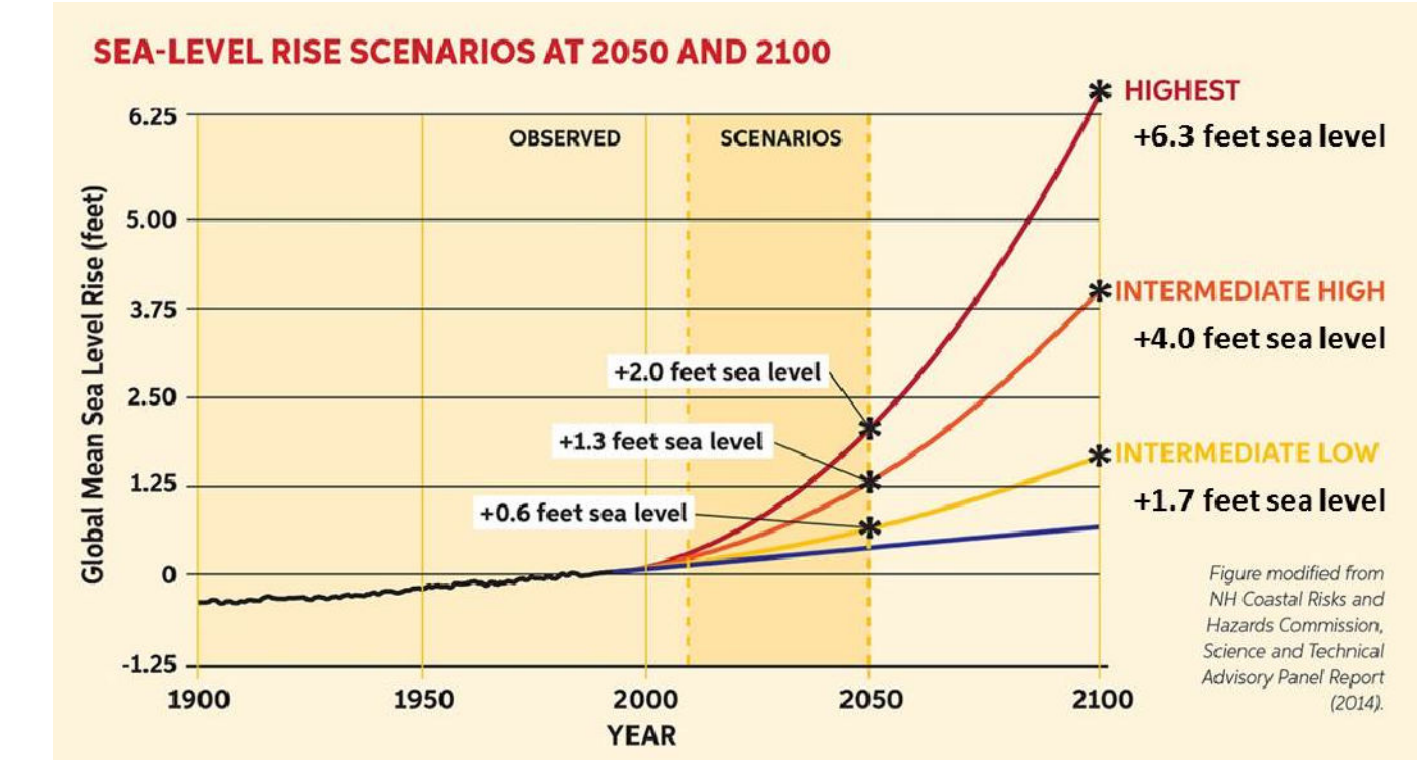
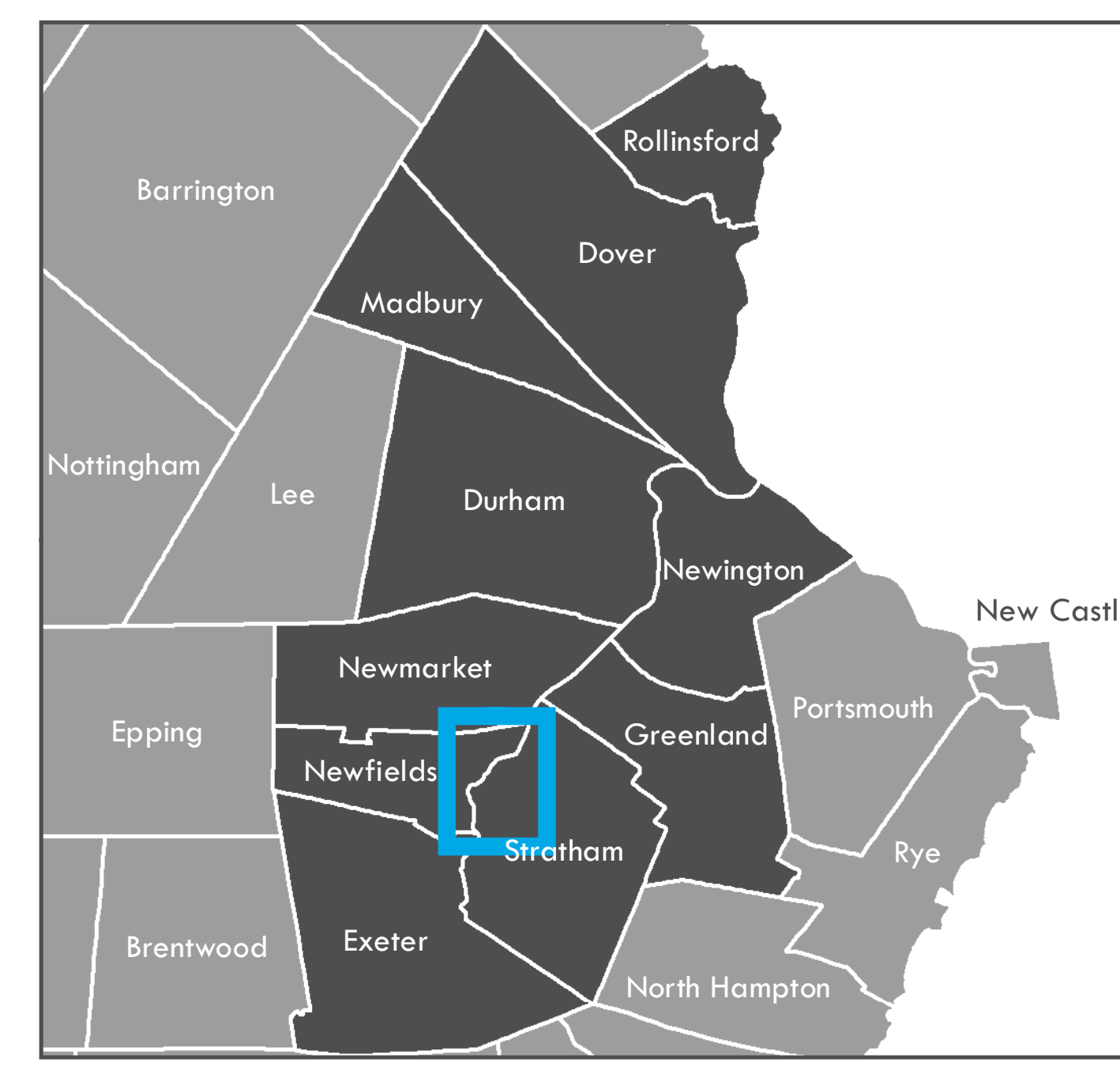
## TOWN OF NEWFIELDS

Extent of Projected Tidal Flooding  
Sea-Level Rise + Storm Surge 1.7', 4.0', 6.3'

### SLR Legend Impact Legend

- Extent of Sea-Level Rise of 1.7' with Storm Surge
- Extent of Sea-Level Rise of 4.0' with Storm Surge
- Extent of Sea-Level Rise of 6.3' with Storm Surge
- Approximate Mean High High Water Level
- Community Anchor Institutions
- Critical Facilities
- Culverts
- Dams
- Energy Facilities
- Graveyard
- Houses
- National Register of Historic Places
- Public Water Supply
- Transmission Substation
- Wastewater Treatment Facilities
- Public Water Access Sites
- Water Pipes

Disclaimer: The building data points shown on this map indicate the relative location of existing structures to the flood scenarios displayed. For the purpose of the C-RiSe assessment, the severity, type, or impact of flooding on these structures was not evaluated.



Sea-Level Rise Scenarios  
Please note that the sea-level rise scenarios used in this assessment were derived from the Wake, 2011 report (refer to table of values below from this report). These scenarios were selected prior to the release of the Science and Technical Advisory Panel Report to the N.H. Coastal Risks & Hazards Commission, in August, 2014 [1]. While slightly different than the scenarios cited in that report, they yield coverage estimates that are within the mapping margin of error.

[1] Wake, C.F., Kirshen, P., Huber, M., Knott, K., and Stimpson, M. (2014) Sea-Level Rise, Storm Surges, and Extreme Precipitation in Coastal New Hampshire: Analysis of Past and Projected Future Trends, prepared by the Science and Technical Advisory Panel (STAP) for the New Hampshire Coastal Risks and Hazards Commission.

	2050		2100	
	Lower	Higher	Lower	Higher
Current Elevation of MHHW <sup>a</sup>	4.4	4.4	4.4	4.4
100-Year Flood Height	6.8	6.8	6.8	6.8
Subsidence	0.0	0.0	0.0	0.0
Elastic SLR	1.0	1.7	2.5	6.3
<b>Total Stillwater Elevation<sup>b,c</sup></b>	<b>12.2</b>	<b>12.9</b>	<b>13.7</b>	<b>17.5</b>

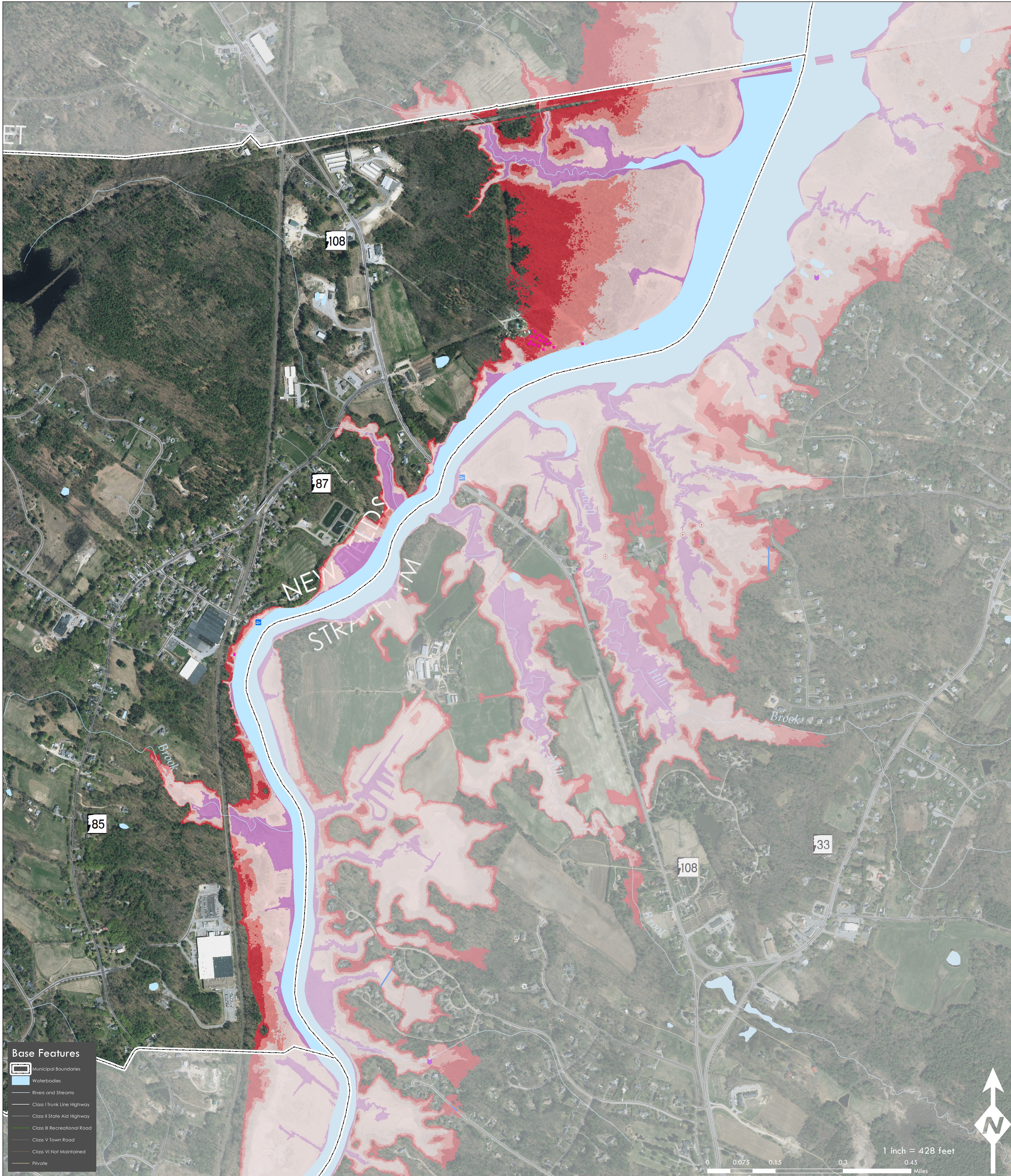
a - NAVD: North American Vertical Datum of 1988  
b - MHHW: Mean Higher High Water at Fort Taber, NH  
c - Total Stillwater Elevation may not equal total of components due to rounding.

Table 13. Estimates (in feet) of future 100-year flood stillwater elevations at Fort Point under lower and higher emission scenarios (relative to NAVD83) based on the statistical analysis presented in this report.

Prepared by the Strafford Regional Planning Commission  
150 Wakefield St., Suite 112 Rochester, NH 03867  
T: (603) 994-3500 E: srpc@strafford.org

Date: 8/30/2016 Author: MS/RF/JL/KP  
Path: M:\Region\Project\_Special\_Merit\Mapping\Final\_Maps\_By\_Community\Newfields\Newfields\_Infrastructure\_4\_6.mxd

Data Sources: Data sets were retrieved from the NH GRANIT database, December, 2015. Digital data in NH GRANIT represent the efforts of the contributing agencies to record information from the cited source materials. Earth Systems Research Center (ESRC), under contract to the Office of Energy & Planning (OEP), and in consultation with cooperating agencies, maintains a continuing program to identify and correct errors in these data. Neither OEP nor ESRC make any claim as to the validity or reliability or to any implied uses of these data.



- Base Features**
- Municipal Boundaries
  - Waterbodies
  - Rivers and Streams
  - Class I Trunk Line Highway
  - Class II State Aid Highway
  - Class III Recreational Road
  - Class V Town Road
  - Class VI Not Maintained
  - Private

Infrastructure Asset Impacts: Town of Newfields					
Impacted Asset	Metric	Sea Level Scenarios			General Information
		1.7 feet	4.0 feet	6.3 feet	
Sewer Pipes	Miles	0.00	0.00	0.00	Critical Municipal Infrastructure
Water Pipes	Miles	0.00	0.00	0.00	Critical Municipal Infrastructure
Transmission Lines	Miles	0.00	0.00	0.00	Critical Municipal Infrastructure

Other Infrastructure Assets: Town of Newfields				
Impacted Asset	Metric	Metric Impact	General Location and Name	
			Water Access	#
Residential Structures	#	18	Building data points shown on this map indicate the relative location of existing structures	

