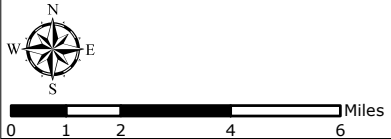
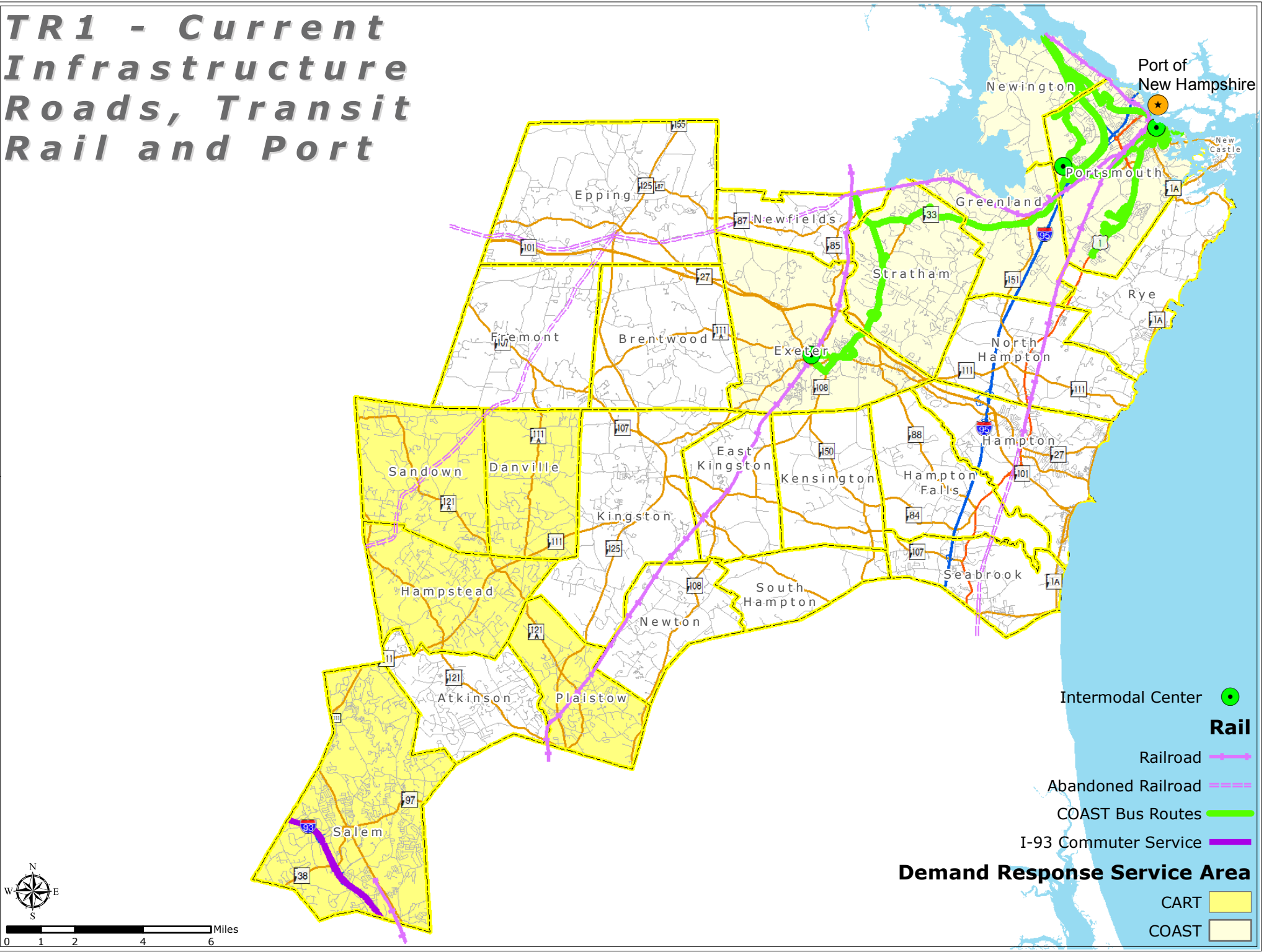
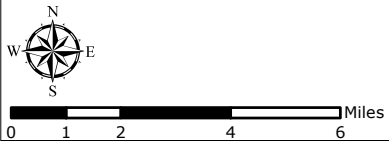
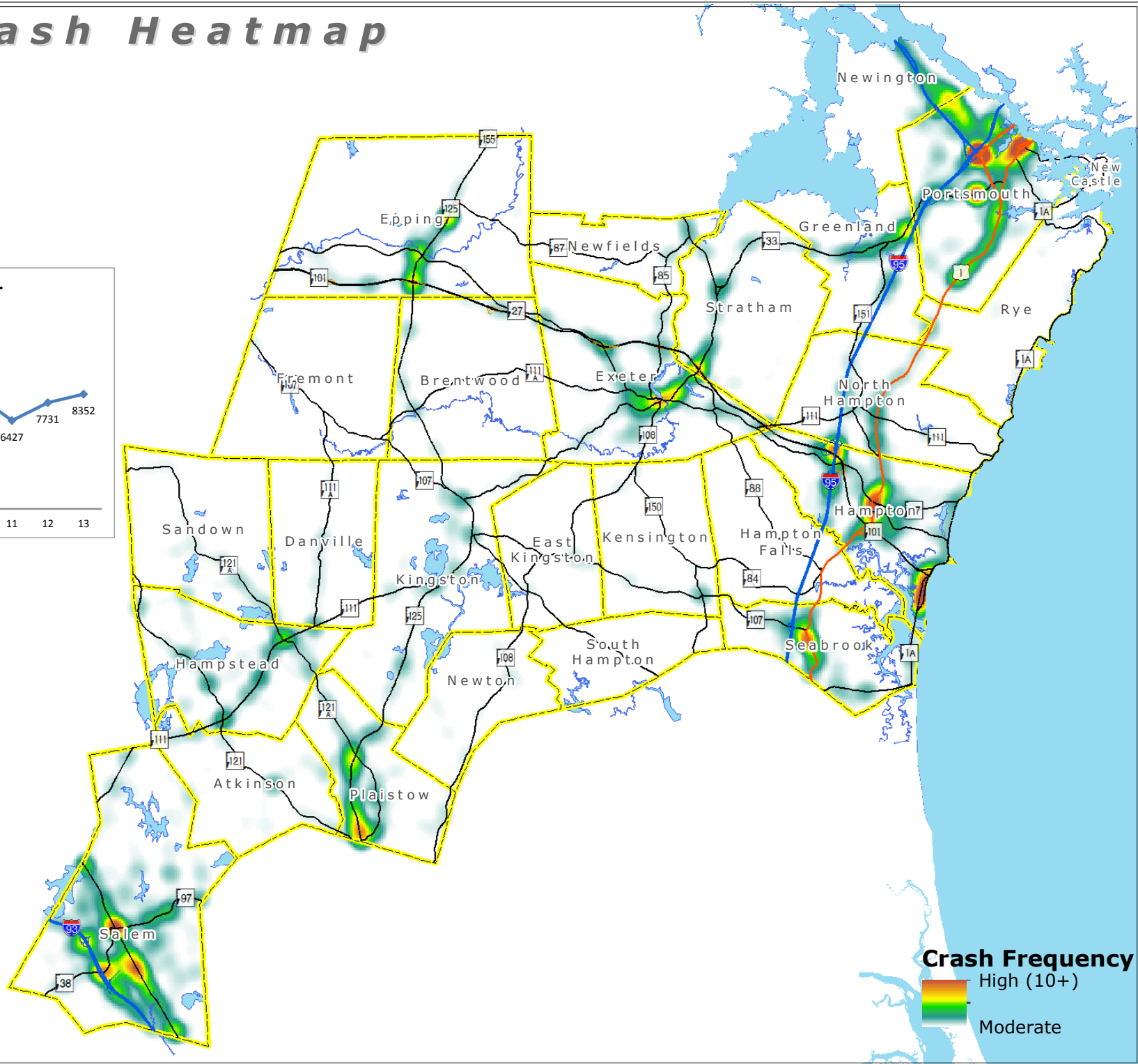
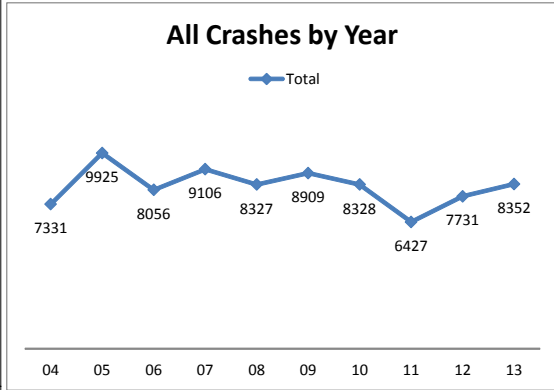


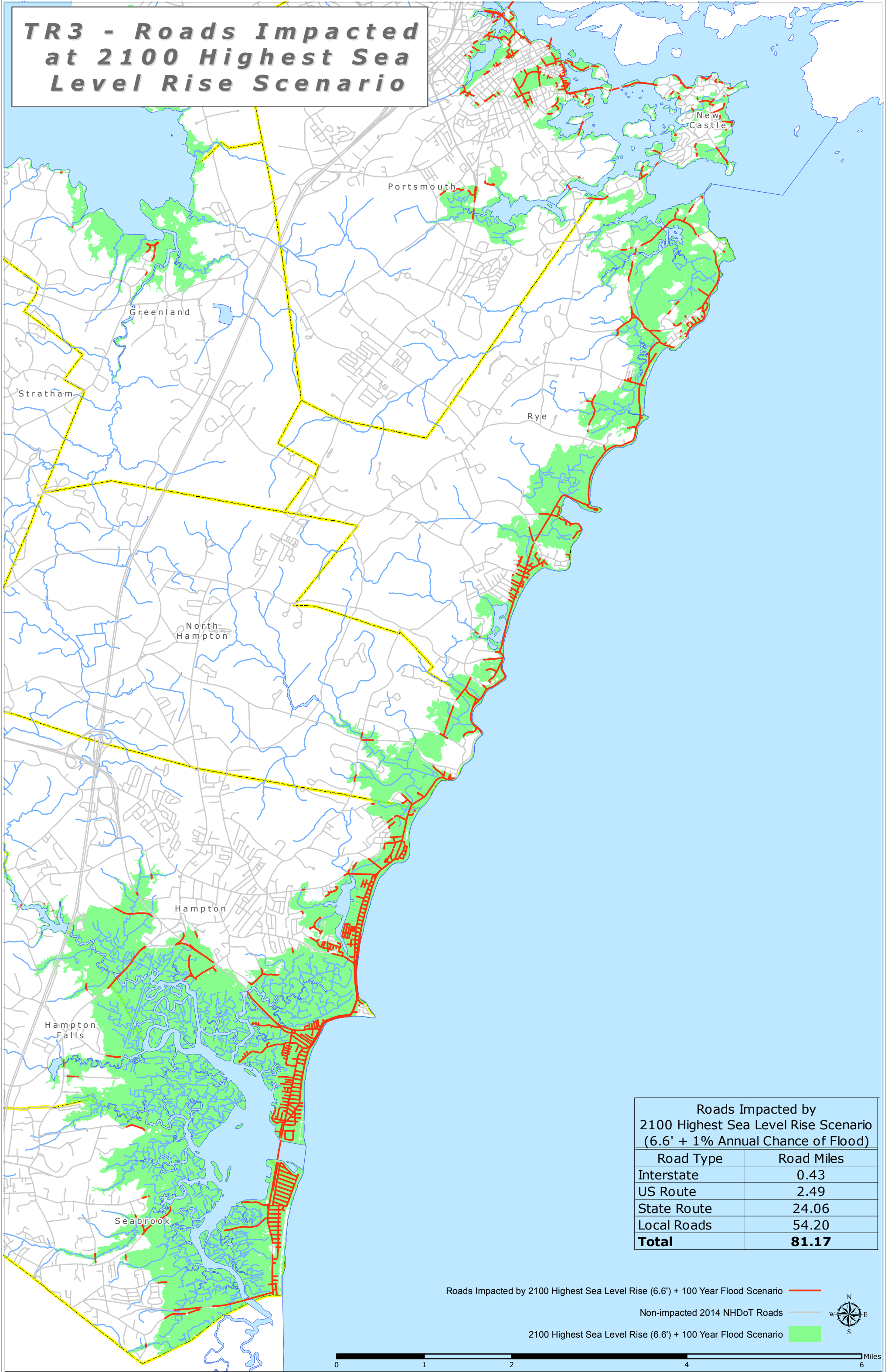
TR1 - Current Infrastructure Roads, Transit Rail and Port



TR2 - Crash Heatmap



TR3 - Roads Impacted at 2100 Highest Sea Level Rise Scenario



Roads Impacted by 2100 Highest Sea Level Rise Scenario (6.6' + 1% Annual Chance of Flood)

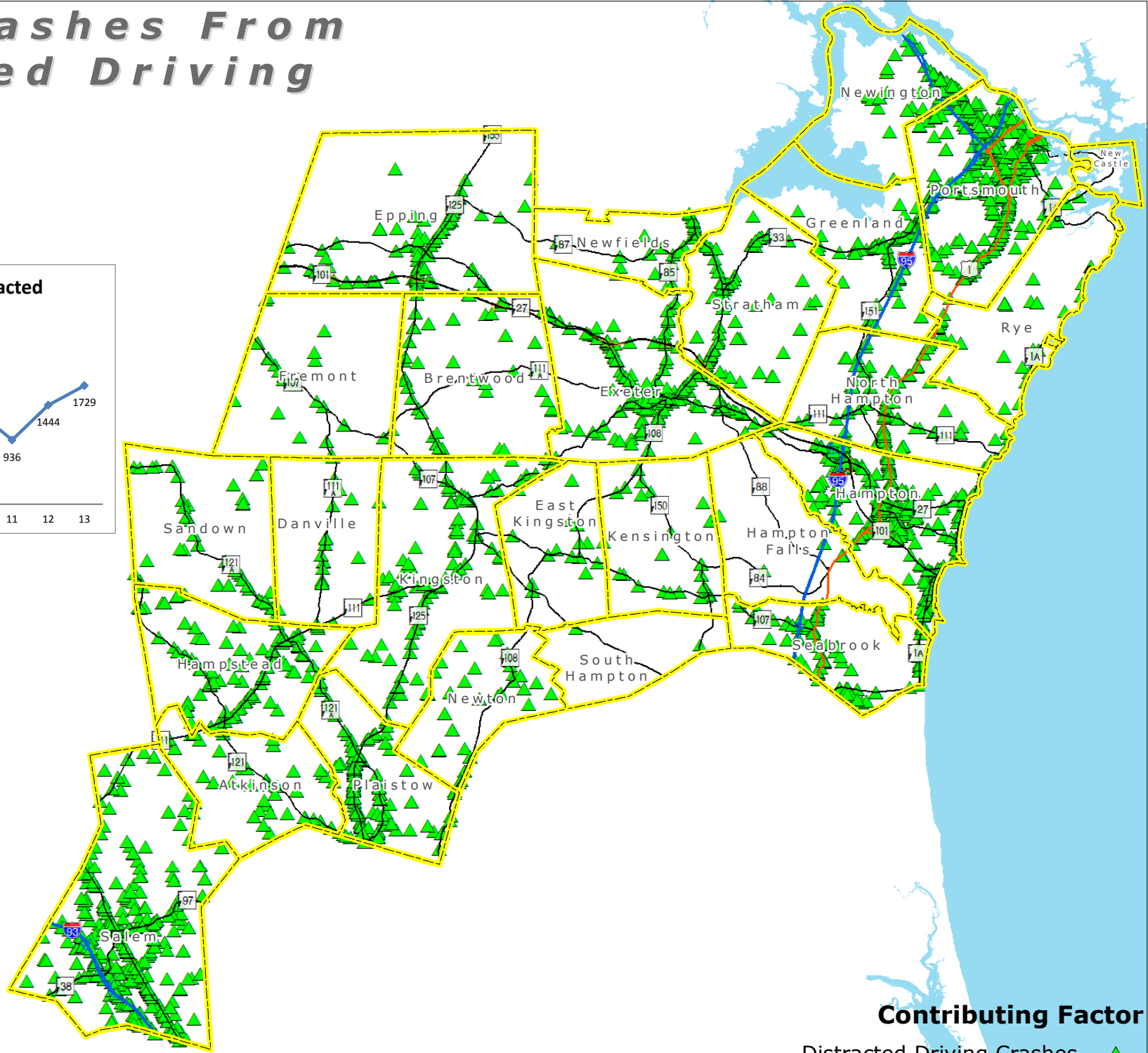
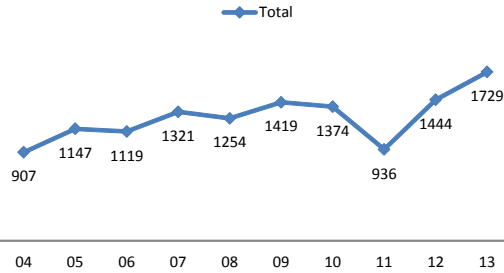
Road Type	Road Miles
Interstate	0.43
US Route	2.49
State Route	24.06
Local Roads	54.20
Total	81.17

Roads Impacted by 2100 Highest Sea Level Rise (6.6') + 100 Year Flood Scenario —
 Non-impacted 2014 NHDOT Roads —
 2100 Highest Sea Level Rise (6.6') + 100 Year Flood Scenario

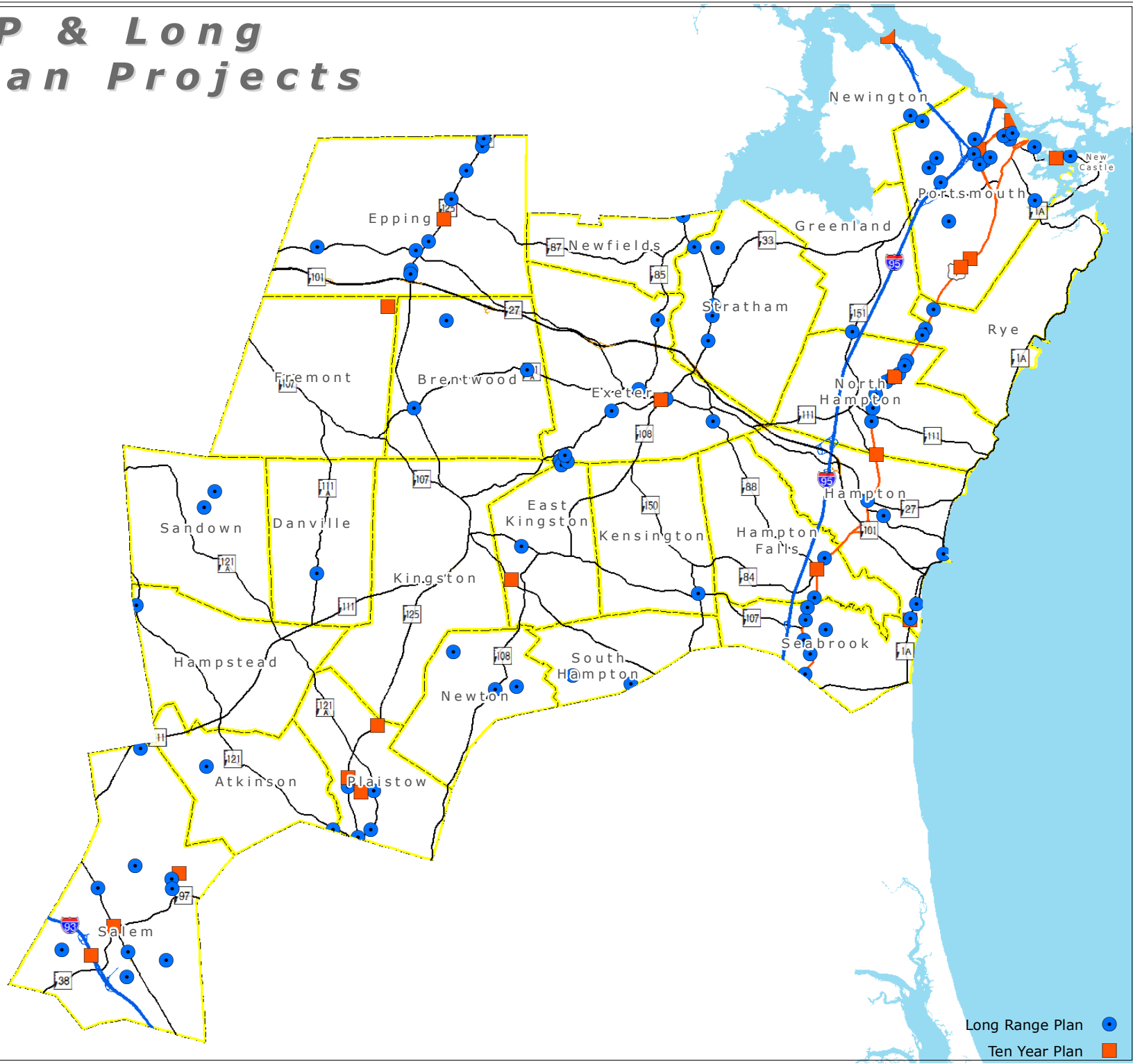


TR4 - Crashes From Distracted Driving

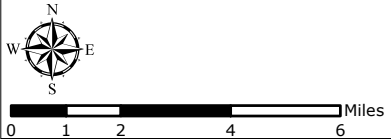
Crashes Involving Distracted Driving by Year



TR5 - TIP & Long Range Plan Projects



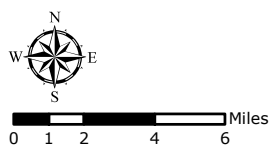
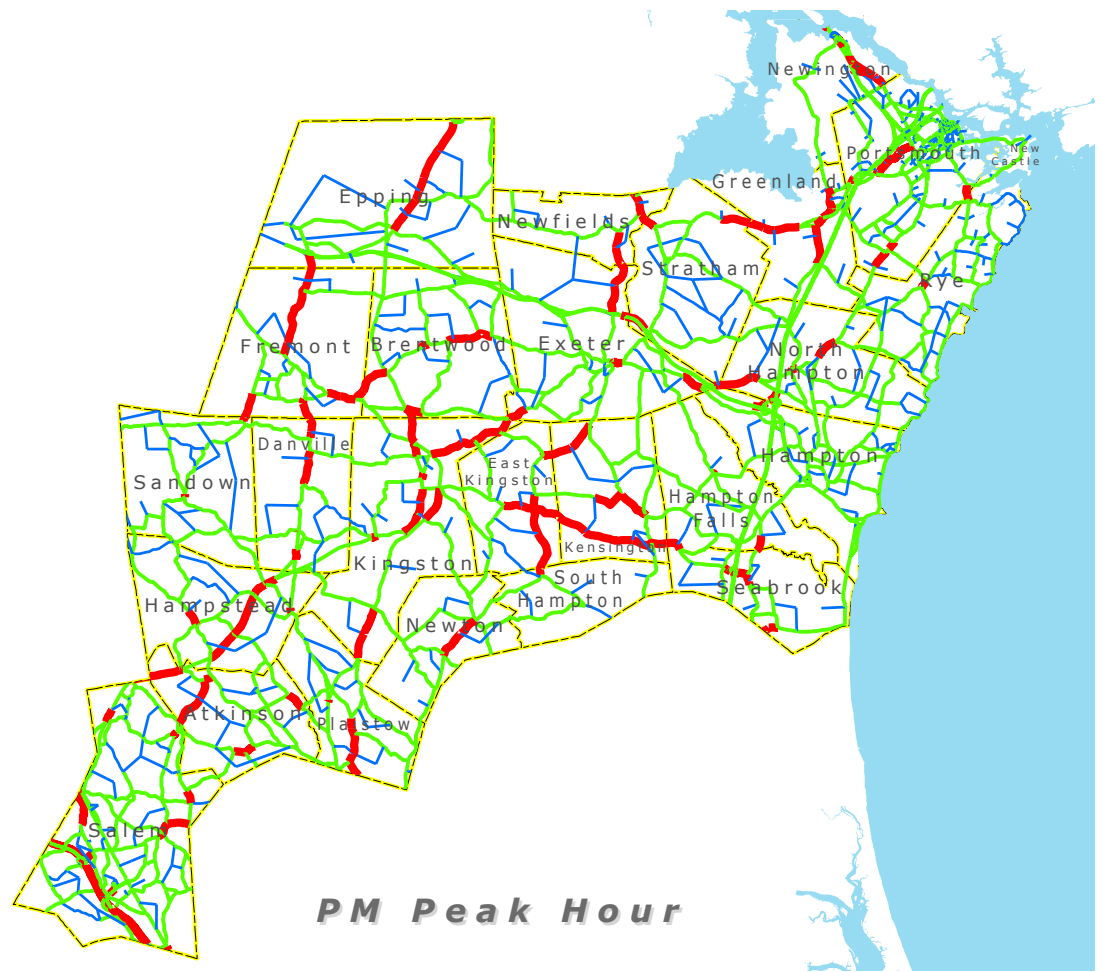
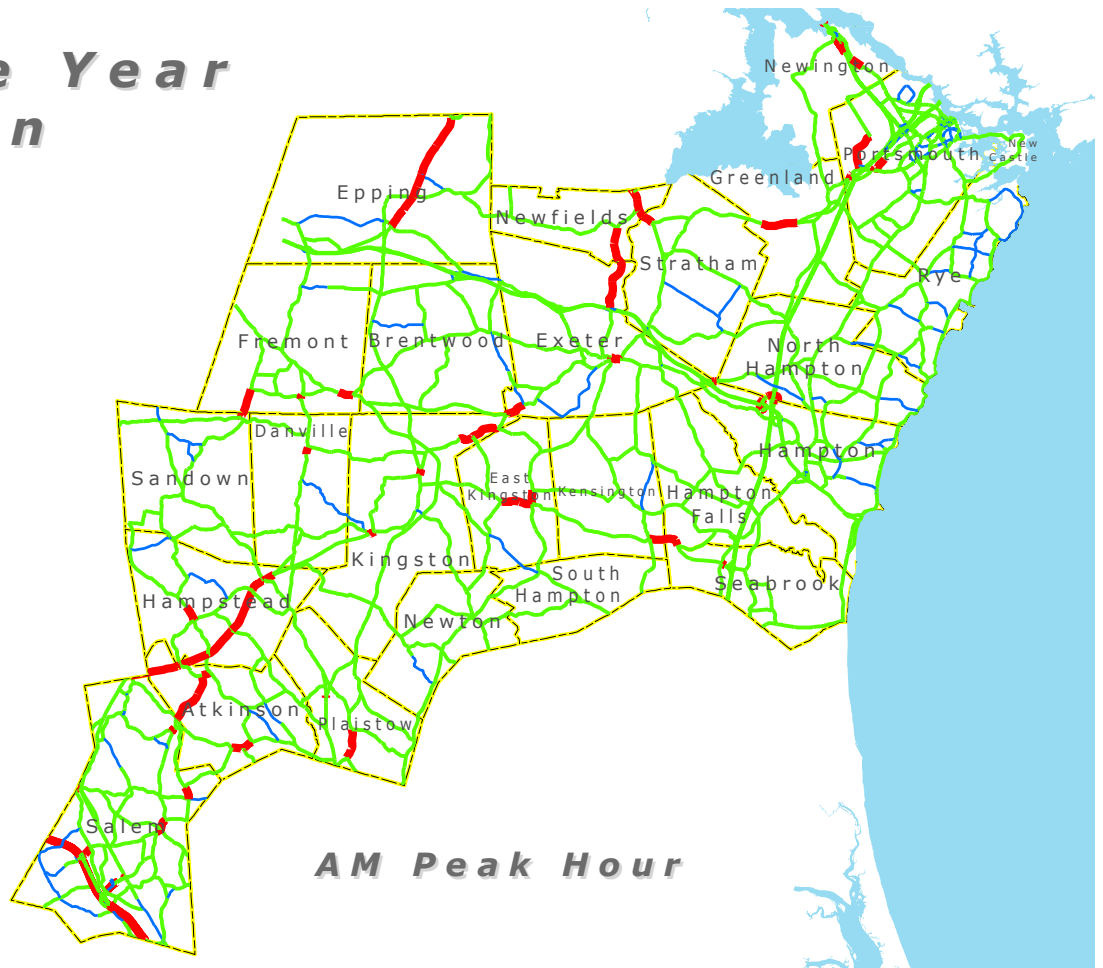
Long Range Plan ●
Ten Year Plan ■



Map TR6 2010 Base Year Congestion

These maps reflect the baseline 2010 condition to which the future growth is compared.

- Uncongested
- Moderate
- Congested



Map TR7 2040 Projected Congestion

This alternative continues the existing pattern of development and a slow growth rate of growth

- Uncongested
- Moderately Congested
- Congested

