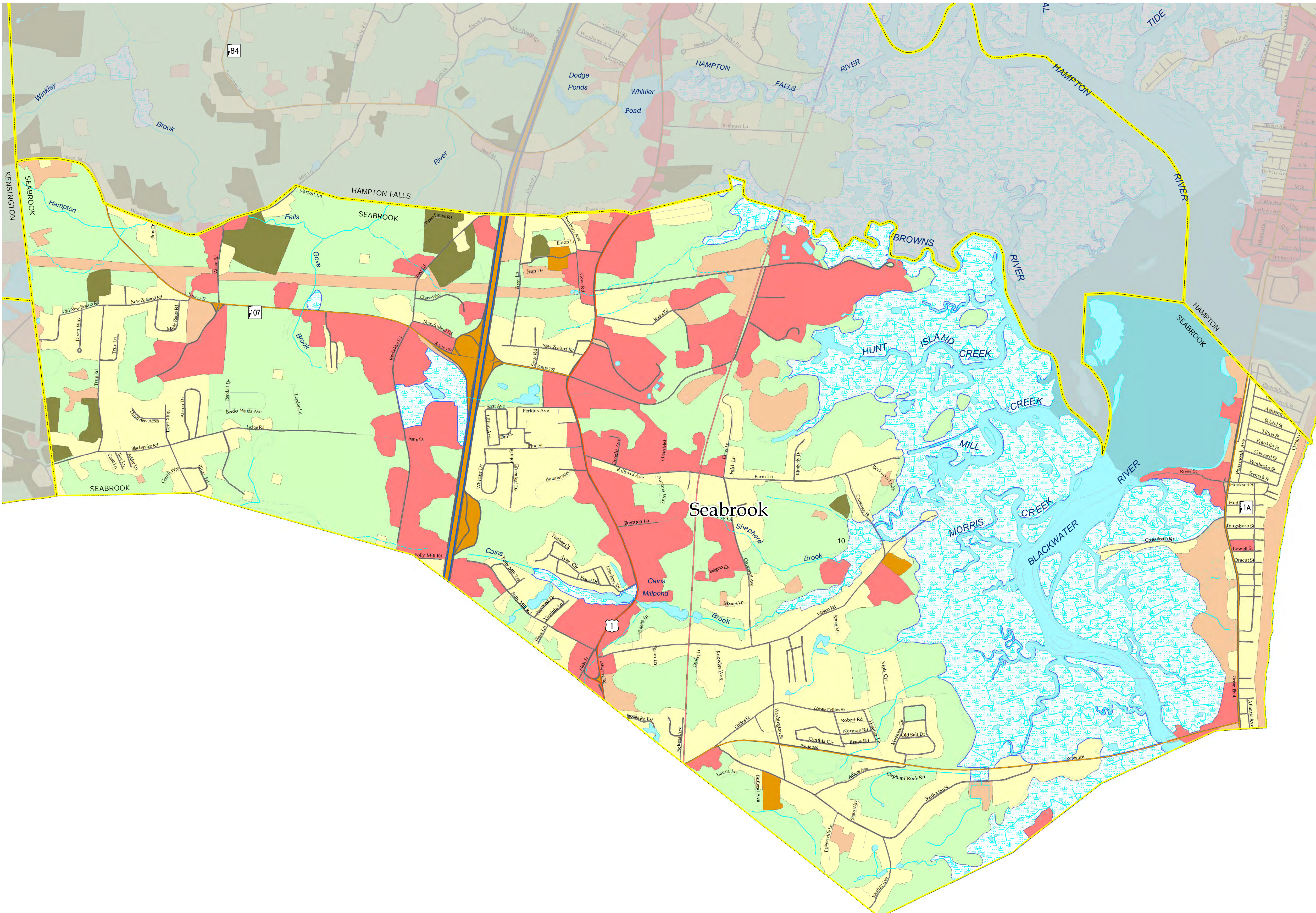


1998 Land Use Map Seabrook

Date: Fall 2015



- Active Agricultural
- Aux Transportation
- Farmsteads
- Forested
- Industrial/Commercial
- Mixed Urban
- Open Wetlands
- Other/Idle
- Playing fields / Recreation
- Railroad
- Residential
- Transportation
- Utilities
- Water

RPC Standard Legend

- Town Boundaries
- Shoreline; Stream
- Interstate
- Water Feature
- Apparent Wetland Limit
- US Route
- Tidal Feature
- Intermittent Stream
- State Route
- Other Surface Water Feature
- Local

2010 Land Use
2010 land use was created from year 2010 1' resolution, natural color aerial photos supplied by NHDOT. This dataset was created through 'heads-up' digitization of the aerial photos at a recommended scale of 1:2,400 (1"=200'). This was an update to the 2005 Land use update completed by the RPC. These datasets along with the 1962, 1974, 1998 land use created by GRANIT use a similar method. The method reflects "NH Land Use Mapping Standard CTAP Land Use Mapping Project" from GRANIT March, 2007. This method closely matches the national standard USGS "Anderson level IV" method. While the digitization is done at Level IV, it is symbolized at the level II, thus giving us consistency across the early GRANIT and later RPC datasets.

RPC extends every effort to ensure map data is current and complete, however, errors do happen. Please let us know if you spot errors or omissions.

Base Features (transportation, political and hydrographic) were automated from the USGS Digital Line Graph data, 1:24,000, as archived in the GRANIT database at Complex Systems Research Center, Institute for the Study of Earth, Oceans and Space, University of New Hampshire, Durham, NH; 1992-2012. The roads within the Rockingham Planning Region have been updated by NH Department of Transportation through local input by the RPC where available.

Although these data have been processed successfully on a computer system at the Rockingham Planning Commission, no warranty expressed or implied is made regarding the accuracy or utility of the data on any other system or for general or scientific purposes, nor shall the act of distribution constitute any such warranty. It is also strongly recommended that careful attention be paid to the contents of the metadata file associated with these data to evaluate data set limitations, restrictions or intended use. Rockingham Planning Commission shall not be held liable for improper or incorrect use of the data described and/or contained herein.



This mapset was funded with grants from the NH Office of Energy and Planning and the RPC's UPWP grant.

