

## MEMORANDUM

To: MPO Policy Committee  
From: Scott Bogle, Principal Transportation Planner  
Date: April 3, 2025  
RE: **Transportation Alternatives Program (TAP) Proposal Endorsement**

In October NHDOT published the request for proposals for Round 5 of Transportation Alternatives Program (TAP) funding, a popular federal funding program for local pedestrian and bicycle infrastructure. Applications were due by January 24, 2025 and NHDOT received 30 applications statewide including one from the RPC region – a sidewalk and crossing safety project from the Town of Exeter.

The Exeter project consists of a suite of sidewalk, intersection and crossing improvements extending outward from the intersection of Front Street/NH111 and Railroad Avenue. It has a total cost of \$1.3 million and requests \$1.08 million in federal TAP funding. Specific elements include the following:

- Construct approximately 1,245 linear feet of 5-foot wide sidewalk on Railroad Ave between Front St/NH111 and Winter Street
- Reconfigure the intersection of Railroad Ave and Front St to shorten the length of the crosswalk (currently over 100')
- Reduce pavement width of Railroad Ave to reduce vehicles taking the turn at inappropriately high speeds
- Construct an ADA accessible tip down on the west side of Railroad Avenue
- Replace the existing painted sidewalk on the north side of Front St between Railroad Ave and the Agway parking lot with granite curbed sidewalk
- Reduce curb cut widths at the Agway parking lot to improve safety
- Install a user-activated Rectangular Rapid Flashing Beacon (RRFB) at the crosswalk just to the east of the railroad track on Front St.

These improvements were all recommendations of Exeter's Bicycle and Pedestrian Master Plan developed for the town by RPC and completed in 2024.

Staff have prepared a project summary/scoring sheet for the project consistent with past rounds of TAP and CMAQ funding, including staff comments, information on projects' consistency with or listing in local and regional plans, and local support. A map for the project is also attached.

The full copy of the Exeter application is downloadable on the MPO website at:  
<http://www.therpc.org/transportation/transportation-alternatives>.

The criteria for project scoring and prioritization have changed for this round of TAP, and are shown in the table below.

<b>Category</b>	<b>Points</b>	<b>Criterion</b>	<b>Weight</b>
Project Characteristics (to be scored by planning commissions)	85 pts	Add to existing ped/bike facility	20 pts
		Provide vital ped/bike connections	20 pts
		Connection to other modes	10 pts
		Stewardship	15 pts
Vulnerable Road User Target Areas (to be scored by NHDOT)	10 pts	Vulnerable Road User Target Areas	10 pts
NHDOT Priorities (to be scored by NHDOT)	5 pts	NHDOT Departmental Priorities	5 pts
RPC/MPO Rankings	20 pts	RPC/MPO Rankings	20 pts
<b>TOTAL</b>	<b>120 pts</b>		<b>120 pts</b>

If you have questions in advance of the TAC meeting contact me at 603-658-0515 or [sbogle@therpc.org](mailto:sbogle@therpc.org).

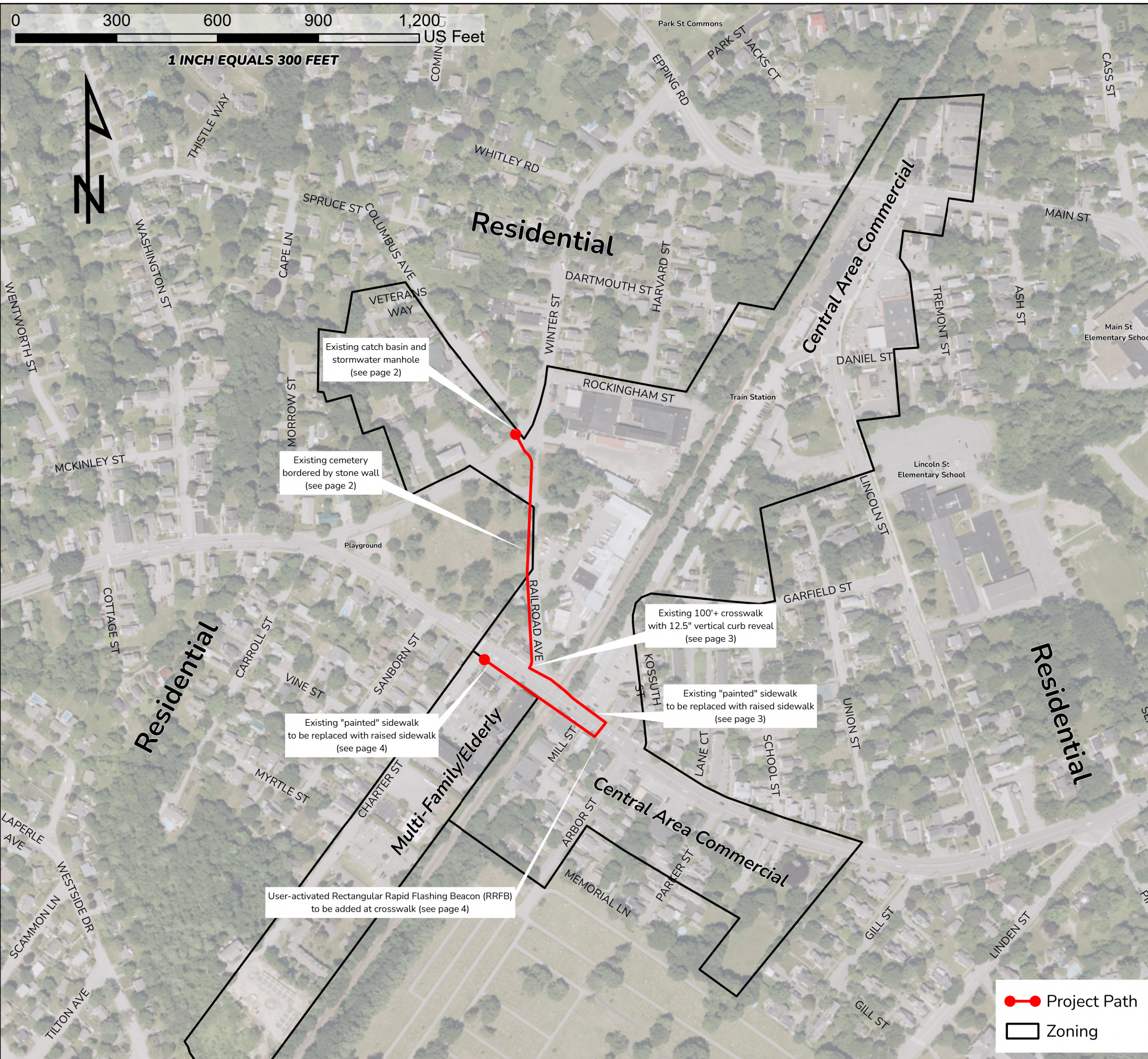
The MPO TAC reviewed the project at their meeting on March 27<sup>th</sup> and recommended the Policy Committee vote to endorse the project and forward to NHDOT for the statewide TAP project selection process.

#### **Requested Action**

Staff ask that the MPO Policy Committee to review the Exeter application in advance of the April 9<sup>th</sup> meeting, and at that meeting vote to endorse the project as the top TAP priority for the region.

**Rockingham Planning Commission  
2024-25 Transportation Alternatives Program Project Summary and Evaluation Sheet**

<b>Evaluation (See Criteria Sheet)</b>			Project Location: Exeter	Project ID: RPC-TA24-1
Criterion	Staff Score	TAC Score	Project Title: Front Street/NH111 and Lincoln Street Pedestrian Improvements	
1. (20pts) Add to existing network	<b>20</b>		Applicant: Town of Exeter	
2. (20pts) Provide vital connection	<b>20</b>		Brief Project Description:  This project includes the following components: <ul style="list-style-type: none"> <li>• Construct approximately 1,245 linear feet of 5-foot wide sidewalk on Railroad Ave between Front St/NH111 and Winter Street</li> <li>• Reconfigure the intersection of Railroad Ave and Front St to shorten the length of the crosswalk (currently over 100')</li> <li>• Reduce pavement width of Railroad Ave to reduce vehicles taking the turn at inappropriately high speeds</li> <li>• Construct an ADA accessible tip down on the west side of Railroad Avenue</li> <li>• Replace the existing painted sidewalk on the north side of Front St between Railroad Ave and the Agway parking lot with granite curbed sidewalk</li> <li>• Reduce curb cut widths at the Agway parking lot to improve safety</li> <li>• Install a user-activated Rectangular Rapid Flashing Beacon (RRFB) at the crosswalk just to the east of the railroad track on Front St.</li> </ul> These improvements were all recommendations of Exeter's Bicycle and Pedestrian Master Plan completed in 2024.	
3. (10 pts) Connection to other modes	<b>10</b>			
4. (15 pts) Stewardship	<b>15</b>			
5. (10 pts) NHDOT VRU Target Areas	<b>TBD</b>			
6. (5 pts) NHDOT Priorities	<b>TBD</b>			
7. (20 pts) RPC/MPO Rank	<b>20</b>			
			Source of Match: \$266,988 (Selectmen commit to 2022 warrant article)	
			Federal Percentage: 80%	
			Non-Federal Percentage: 20%	
			Municipally Managed? Yes	
<b>Total</b>	<b>85</b>		Other Comments: <ul style="list-style-type: none"> <li>• All components of this project are identified in the Exeter Bicycle &amp; Pedestrian Master Plan (2024)</li> <li>• Improves safety for walking to Lincoln Street Elementary School for children living in Exeter's west side neighborhoods; and improves the pedestrian connection to the Amtrak Downeaster at Lincoln Street Station.</li> <li>• Builds on ongoing Town investment in Exeter's sidewalk network, most recently including town-funded sidewalk and crosswalk improvements on Front Street completed in 2023</li> <li>• No known cultural, archaeological, or hazardous materials have been identified within the project limits.</li> <li>• Scoring for NHDOT's Vulnerable Road User Target Areas is TBD, though data from NHDOT VRU Safety Assessment showed Exeter with a high level of VRU crashes per capita.</li> </ul>	
<b>TAC Ranking</b>				
<b>MPO Ranking</b>				



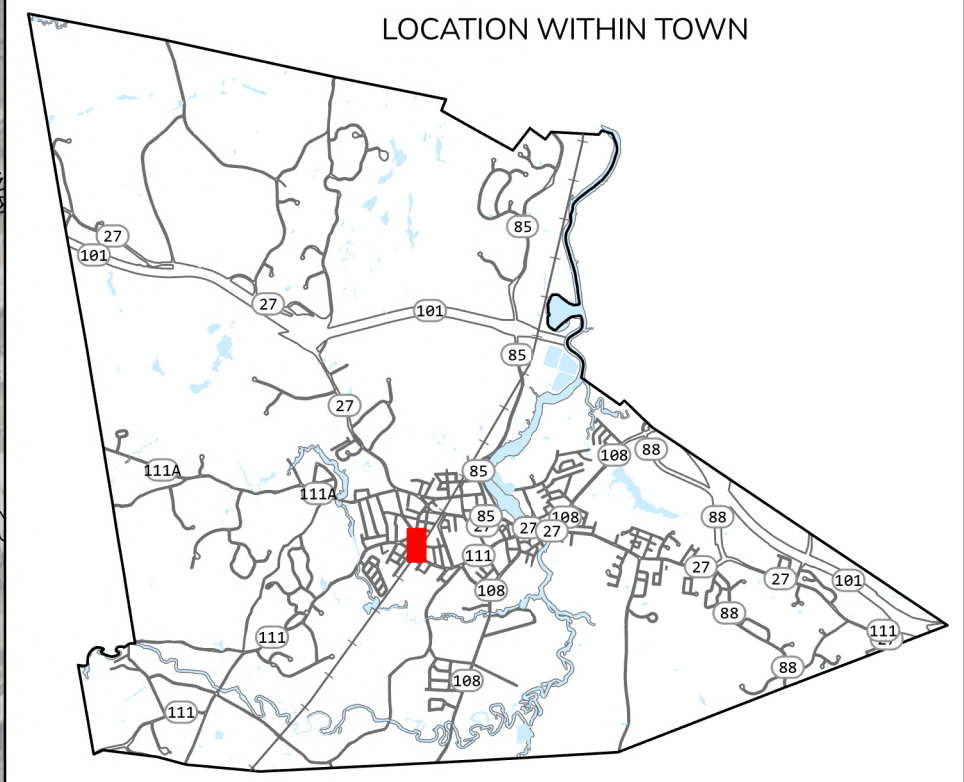
# Transportation Alternatives Program Town of Exeter, New Hampshire Project Proposal Map

Project Contact: Dave Sharples, Town Planner  
dsharples@exeternh.gov  
Regional Planning Commission: Rockingham

Project Description: Construct approximately 1,245 linear feet of bituminous asphalt sidewalk that will be 5 feet in width and create safer and accessible pedestrian crossings within the project area.

Affected streets: Winter St, Railroad Ave, Front St

## PAGE 1 OF 4





**A** (Left) Looking south from the corner of Columbus Ave and Winter St, towards Railroad Ave. There is a crosswalk on Columbus Ave, a catch basin on the corner of Columbus and Winter St, and a catch basin on the opposite side of Winter St. This project will include a new crosswalk across Winter St, bringing pedestrians to a new sidewalk along the West side of Railroad Ave.



**B** (Right) Looking south from the corner of the Winter St Cemetery, The stone wall marks the eastern boundary of the cemetery. This TAP application proposes a 5' wide sidewalk between the stone wall and the street.





(Left) Looking westward from point A along the 100+' crosswalk, towards Retro World and Pizza Academy. The curb is 12.5" high with no ADA ramp.



(Left) Looking east along Front St from point A, towards the municipal parking lot. The "sidewalk" is flush with the road and offers no protection for pedestrians from the traffic on Front St, which is also state route 111.



12.5" curb reveal at end of crosswalk

Painted sidewalk

0 50 100 150 200 US Feet



(Left) Looking westward from point A along the south side of Front St, across the driveway of the auto body shop. The parking lot of the auto body shop is flush with the street. There is no protection from traffic, or visible sidewalk, for pedestrians on their way to the crosswalk.



RAILROAD AVE  
Pizza Academy  
Retro World

Dodge's Farm & Garden

Municipal Parking Lot

KOSSUTH ST

Proposed user-activated Rectangular Rapid Flashing Beacon (RRFB)

Business driveway

FRONT ST

A

CHARTER ST

Status Auto Works

Front Street Tower

Enna Chocolate  
Fat Hen Brewing Co.  
Lux's Studio Hair Salon

MILL ST

0 50 100 150 200 US Feet

