

MINUTES
Rockingham Planning Commission
September 9, 2020

Remote Meeting via ZOOM Conference call
Per RSA 91-A:2, III(b) the RPC Chair declared the COVID-19 Outbreak
An Emergency and has waived the requirement
That a quorum be physically present at the meeting

Commissioners Present: A. Davis, Vice Chairman (Hampstead); T. Moore, J. Kiszka (Plaistow); B. Moreau, P. Britz, J. Tabor (Portsmouth); G. English (Exeter); P. Wilson (North Hampton); L. Cushman (Stratham); A. Carnaby, B. Kravitz (Hampton); G. Coppelman, P. Coffin (Kingston); M. McAndrew (New Castle); A. Brubaker (H. Falls)

Guests: K. Latchaw (Newington BOS); H. Herndon (Director-Local Energy Solutions/Clean Power NH)

Staff: T. Roach (Executive Director); D. Walker (Assistant Director); J. LaBranche (Sr. Planner); A. Pettengill (Business Manager)

- 1. Vice Chair Davis called the meeting to order at 7p.m.; Remote Meeting via Zoom Conference Call per RSA 91-A:2, III(b)**
- 2. Minutes of June 10, 2020**

*Coppelman moved to approve the Minutes of June 10, 2020 as presented; Brubaker seconded. Roll Call vote taken. 2 abstentions **SO VOTED***

- 3. Welcome to Virtual Plaistow – Tim Moore**

Moore gave highlights about what the town of Plaistow has been working on, including impact fees, master plan updates, CIP updates, and regional water plan.

- 4. Community Power NH – Henry Herndon, Director, Local Energy Solutions- Clean Power NH (CPNH)**

Roache explained that with the RPC's electricity aggregation efforts to reduce electricity costs for municipalities, there is also a possibility for 3rd party savings from those agreements to help residents as well. Roache introduced Henry Herndon. Herndon thanked the RPC for allowing him to discuss the options out there for towns in regards to community power. He reviewed a new law (RSA 53E) that enables local governments to procure electricity service for its residents and businesses just as the towns can do for themselves through a 3rd party provider and CPNH could provide that service for them. He reviewed the benefits of community power aggregation

and the process for implementation. He stated some of the benefits of being a member of CPNH which includes pooled procurement with a portfolio of contract options and the ability to be a partner with CPNH in a regulatory/legislative advocacy to help reform markets and remove regulatory barriers. Questions and answers period followed.

- 5. Seacoast Transportation Corridor Vulnerability Assessment – Julie LaBranche, Dave Walker & Christian Matthews – TABLED for a future meeting**
- 6. Public Comment- None**
- 7. Meeting adjourned at 8:22 p.m.**

Respectfully submitted,
Annette Pettengill, Recording Secretary

MEMORANDUM

From: Julie LaBranche, STCVA Project Manager

To: RPC Commissioners

Date: January 11, 2021

Re: Seacoast Transportation Corridor Vulnerability Assessment Project Status

Issue: Coastal storms and flooding already threaten state and local transportation infrastructure in New Hampshire's seacoast. These risks are expected to increase with rising sea level, causing potential daily inundation of some transportation assets. Climate change related impacts will need to be considered as municipalities and NHDOT maintain or replace aging existing transportation assets and design and construct new systems. Effective adaptation to increasing coastal flood risks will depend upon coordination among transportation decision-makers, municipalities, regulators, and other authorities to share information and develop consistent (or complimentary) transparent methods to ensure a safe and functioning NH Seacoast Transportation Corridor (STC).

Project Focus Area: Route 1A, Route 1, and I-95—the primary roadways running from North/South—and Route 101 and Route 286—the primary evacuation routes running East/West along NH's coast—are all vulnerable to sea-level rise and sea-level rise induced groundwater rise in certain areas.

Project Goals: Enhance regional coordination in New Hampshire for transportation networks vulnerable to sea-level rise and other coastal hazards in order to maximize information sharing, identify opportunities to fill data gaps, and develop shared understanding of options for future transportation planning. The RPC is preparing detailed impact assessment modeling and maps of where the transportation assets are most vulnerable to flooding.

Project Timeframe: October 2019 through December 2021

Project Partners: NHDES Coastal Program, UNH Researchers Jennifer Jacobs and Jo Sias, NHDOT and Seacoast Municipalities | Newington, Portsmouth, New Castle, Rye, North Hampton, Hampton Falls, Hampton, Seabrook, Exeter, Stratham, Greenland

Please visit the project website at <https://www.therpc.org/regional-community-planning/climate-change/STCVA> for updates and more detailed information about modelling and mapping results.

If you have any project questions, contact the following staff:
Julie LaBranche for Project Management
Dave Walker for Transportation Issues
Christian Matthews for Transportation Modeling and Mapping

This project was funded, in part, by NOAA's Office for Coastal Management under the Coastal Zone Management Act in conjunction with the New Hampshire Department of Environmental Services Coastal Program.

Hi everyone,

I think we can sum up 2020 with “the best laid plans of mice and men often go awry”. With the arrival of COVID-19 last March the resilience of our region was challenged. We were forced to rapidly pivot to a new normal: remote learning and working, no gyms, no theaters, closed restaurants and record unemployment.

We shuttered our doors and rapidly adapted remote working technology for our staff, commissioners, and member communities. We advanced our work program and provided our members with resources to support their planning needs in these uncertain times. Through our partnership with the Town of Exeter, the RPC worked to provide our communities with information to access relief funds. We worked with local and state officials to reopen beaches and support outdoor dining. Perhaps most importantly, as region we learned, adapted and became more resilient.

Wishing everyone happy holidays and a happy new year, and don't forget to un-mute.



2020 Accomplishments!



346

Volunteer hours provided by
RPC Commissioners



\$148.8
Million

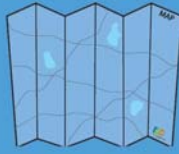
Cost of the 7 projects completed
or under construction in
the region's Transportation
Improvement Program (TIP)



12,000

Businesses reached with
COVID-19 relief assistance
information | \$114,626,278
given to 2,907 businesses in
Rockingham County through
Main Street Relief Funds

“ We want to take a moment to commend you, your team and Governor Sununu on a job well done, as it relates the Main Street Relief Fund...If it wasn't for the swift action of the Governor and your team leadership the NH small businesses community may not have been able to regroup. Thank you for your incredible service and support. ” - Paula, Edge Velocity, Salem



446

Maps produced by RPC and 442 linear feet of maps printed!



325

Miles of roadway evaluated for safety for the NH State Bike Ped Plan; 23.6 miles were prioritized for bikes and 5.3 miles for sidewalks

Provided technical assistance on 5 municipal master plan projects | zoning regulations in 9 towns | MS4 Stormwater Permit compliance for 6 communities



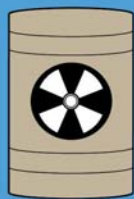
\$120,000

Funds awarded for coastal resilience and climate change planning efforts



\$ 8,500,000

Cost of 5 priority projects submitted for the next State Ten Year Plan



613

Households from 7 towns helped with safe disposal of 1,437 gallons and 579 lbs. of hazardous waste



\$ 9,680

Municipalities' energy costs savings through RPC's Electricity Aggregation Program



\$ 89,000

In community local dues used to leverage \$700,000 in federal planning dollars

9 RPC Staff | 1 Intern | 3 Consultants

Here for you in 2021



RPC Upcoming Meetings

Wednesday, January 13 - RPC Full Commission Meeting
Tuesday, January 26 - Exeter-Squamscott River LAC Meeting
Wednesday, January 27 - Executive Committee Meeting
Thursday, January 28 - Transportation Advisory Committee Meeting



Rockingham Planning Commission
156 Water Street, Exeter, NH 03833
603-778-0885
www.theRPC.org

Want to change how you receive these emails?
You can [update your preferences](#) or [unsubscribe from this list](#).

This email was sent to <<Email Address>>
[why did I get this?](#) [unsubscribe from this list](#) [update subscription preferences](#)
Rockingham Planning Commission · 156 Water St · Exeter, NH 03833-2430 · USA





COMMISSIONER'S HANDBOOK



ROCKINGHAM PLANNING COMMISSION
156 Water Street, Exeter, NH 03833
Phone: 603-778-0885 Email@therpc.org TheRPC.org

Welcome and congratulations on your appointment as a Commissioner of the Rockingham Planning Commission.

Being an RPC Commissioner is a rewarding and impactful experience, allowing you to help guide the region to a sustainable and resilient future. Your most important duty as RPC Commissioner is to represent the needs and interests of your community as we work collaboratively to plan for the region. As a Commissioner, you provide a conduit for two-way communication between the Commission and your community.



The Commission serves three main purposes: 1) to provide member communities with individual technical assistance in planning; 2) carry out regional land use and transportation planning as required by statute; and 3) to facilitate communication and cooperation between towns to help solve problems transcend municipal boundaries.

As a Commissioner you will also serve as a representative to the Rockingham Metropolitan Planning Organization (MPO) Policy Committee. Serving in this capacity, you will be involved in the regional transportation planning process and will help prioritize transportation needs in the region.

Our meetings are usually held on the second Wednesday of the month resulting in approximately ten meetings a year. Our practice is to meet in various locations, such as town halls and community centers around the region. You will receive an email the week before each meeting which includes the meeting location, agenda and related materials.

I invite you to read the attached Commissioner's Handbook in order to learn more about your duties as a commissioner, how the commission functions, allocation of your community's dues, and opportunities to participate in RPC committees. Additionally, the Handbook provides links to access the RPC website at www.theRPC.org to see more information about the Commission, your role as Commissioner, how the agency operates, RPC communities, projects and transportation.

We would be pleased to answer any other questions you may have, either in person or by phone. If there is anything else you need, or if you have questions along the way, please don't hesitate to call.

Sincerely,



Tim Roache, Executive Director

Welcome to the RPC Commissioner’s Handbook. This Handbook is for you!

Your participation and the contributions you make while working with the Commission will be of great value to our region and as well as for your community. Most importantly, your city or town appointed you as their representative and they are counting on you to take advantage of the benefits and services available to your community as a Member of the RPC.

In this Handbook you will find information about the Rockingham Planning Commission and the Rockingham Metropolitan Planning Organization, your role as a Commissioner, opportunities to participate on the RPC Committees, and how to access more information.

TABLE OF CONTENTS

Letter From the Executive Director 2

Welcome 3

The RPC Communities 6

What is the RPC and the MPO? 7

Who will you be working with? 8

Where do your dues go? 9

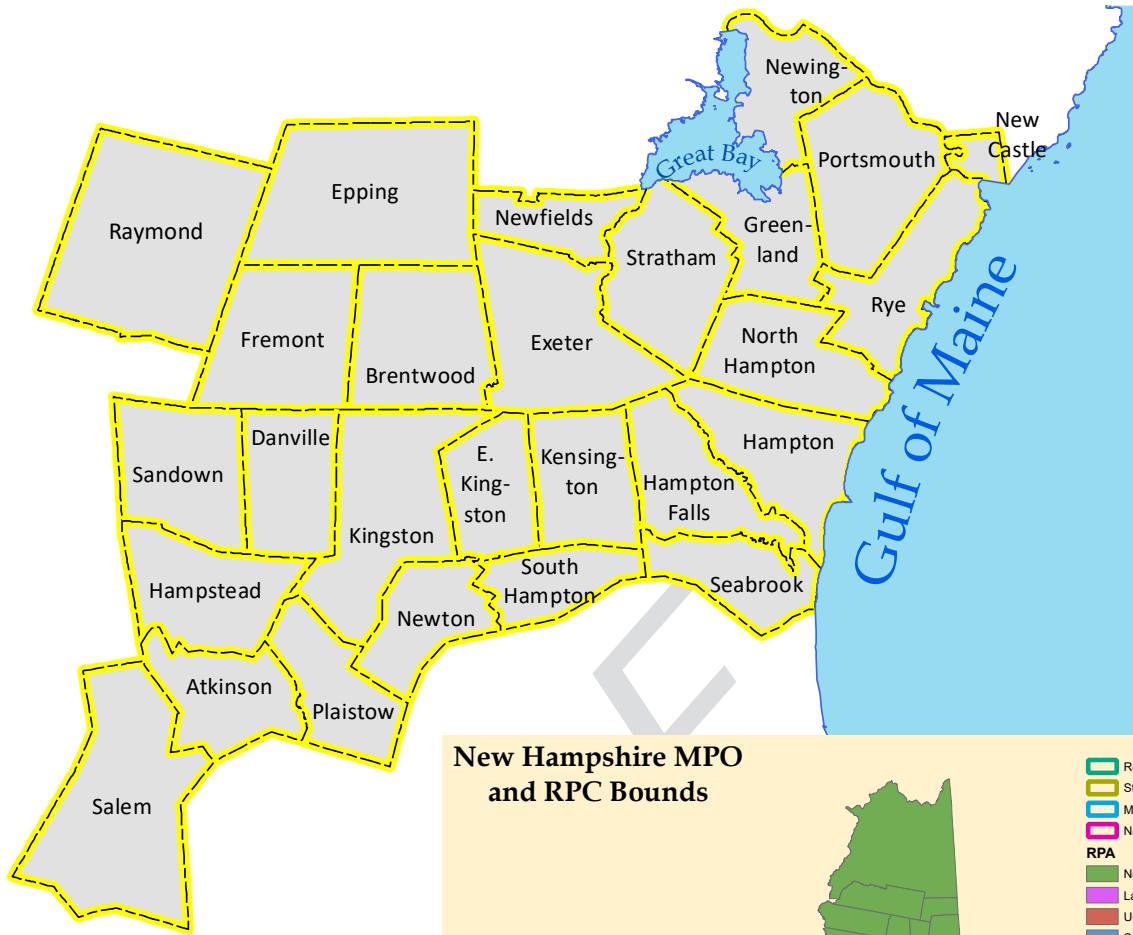
Commissioner’s Duties 10

Opportunities to Participate 11

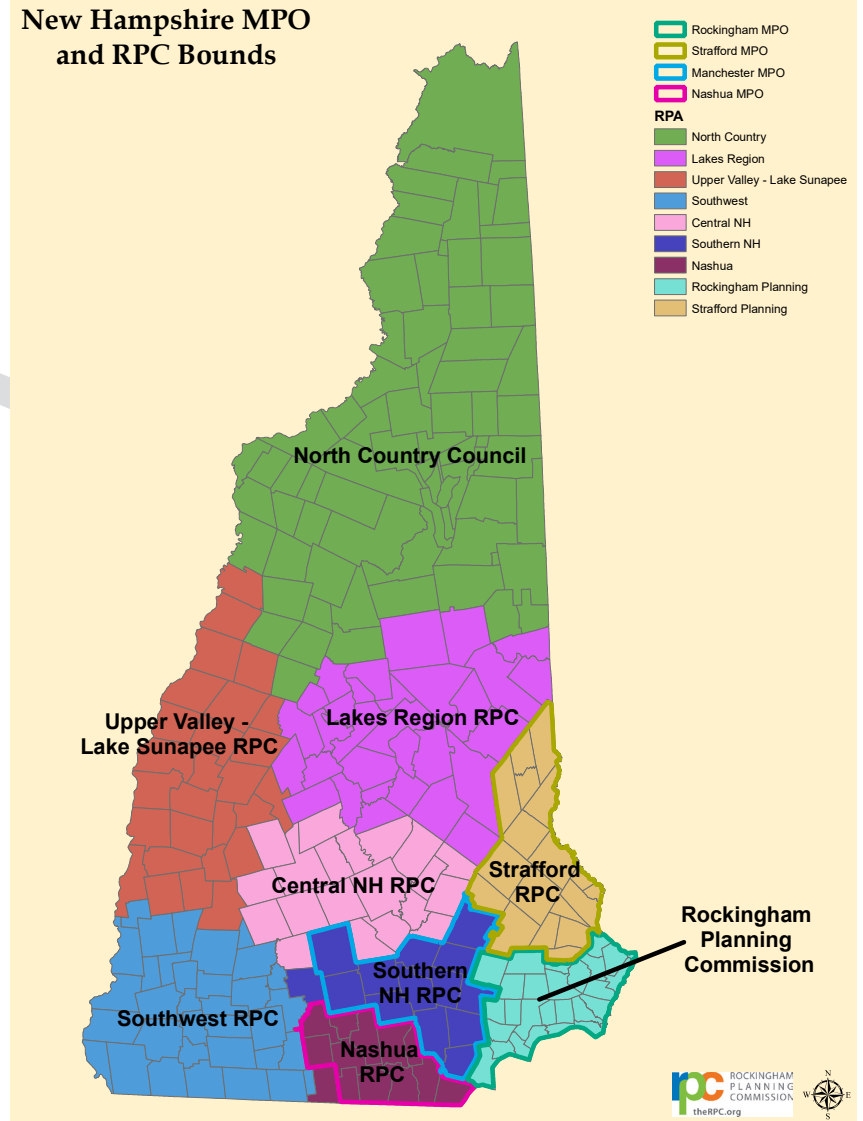
Where to find more information: RPC Bylaws 14

RSA 36:46 15

THE RPC COMMUNITIES



New Hampshire MPO and RPC Bounds



DRAFT

WHAT IS THE ROCKINGHAM PLANNING COMMISSION?

The **Rockingham Planning Commission** (the RPC) is one of nine regional planning commissions in New Hampshire. Established by RSA 36:46 in 1982, our region is comprised of 27 member communities in southern New Hampshire. Operating as a political subdivision of the State of New Hampshire, the Commission serves in an advisory role to local governments in order to promote coordinated planning, orderly growth, efficient land use, long range transportation planning, and environmental protection.

Commissioners are volunteers nominated by their local Planning Boards and appointed by Select Boards or the City Council. The term of office is 4 years; the member community may choose to appoint an alternative commissioner to serve when the delegated commissioner is absent. We meet about 10 times a year to adopt and oversee



the annual work program and budget, establish Commission policies on a variety of land use and transportation planning issues important in the region, and to discuss current planning topics. The Commission is funded by membership dues, service contracts with individual municipalities for the preparation of special documents and projects, and state and federal grants aimed at strengthening local and regional planning.

WHAT IS METROPOLITAN PLANNING ORGANIZATION?

As a Commissioner you are also a member of the Policy Committee of the Rockingham Metropolitan Policy Organization (MPO), which is the federally designated transportation planning agency for 26 communities in southeastern New Hampshire. The MPO is part of a regional partnership with the United States Department of Transportation, New Hampshire Department of Transportation and other state agencies, regional transit agencies, community leadership, local planning and public works officials, the business community, and citizens across the planning area.



DRAFT

The MPO leads in the development of the region's long-range transportation plan and short-range Transportation Improvement Program (TIP) and contributes to ongoing conversations about land use, economic development, climate change, the environment, safety and security, and public health issues.

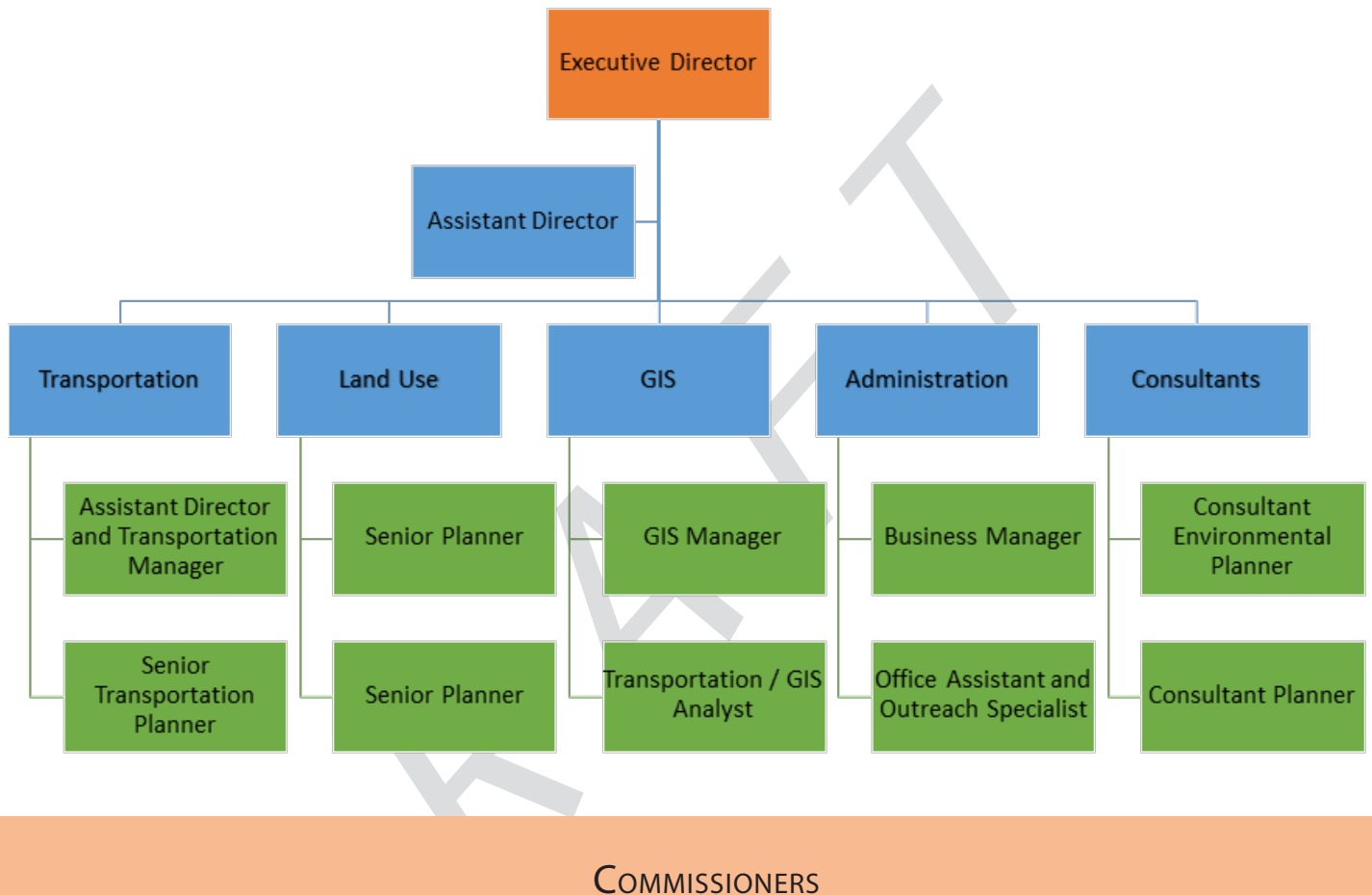
In cooperation with the New Hampshire Department of Transportation, the MPO works to plan, prioritize, and select transportation projects in our region for federal funding appropriated through the United States Department of Transportation Federal Highway Administration and Federal Transit Administration 10-year plan, and is responsible for ensuring the region is in compliance with federal planning requirements and national ambient air quality standards. In all of its programs and activities, the MPO also complies with Title VI of the Civil Rights Act of 1964, the Americans with Disabilities Act (ADA), and other federal and state non-discrimination statutes and regulations related to transportation.

WHO WILL YOU BE WORKING WITH?

TheRPC relies upon their staff members to carry out the work needed by our communities and the state.

For a current list [Staff Members](#) you can visit our website.

Staff Organization Chart



As a commissioner representative, the member will be acting as both an agent of the Rockingham Planning Commission and the municipality they represent. Each municipality is entitled to have 2 representatives on the commission. In more densely populated communities, there may be 3 representatives.

The representatives are to be nominated by the planning board in their community and, once nominated, the municipal officers appoint the representative to the commission. The terms of office for a commissioner member is four years (initial appointments may be 2 years). If there is a vacancy, the replacement will follow the same nomination by the planning board and appointment by the municipal officers as new members. Alternative members may also be appointed.

For a list of current [Commissioners](#) you can visit our website.

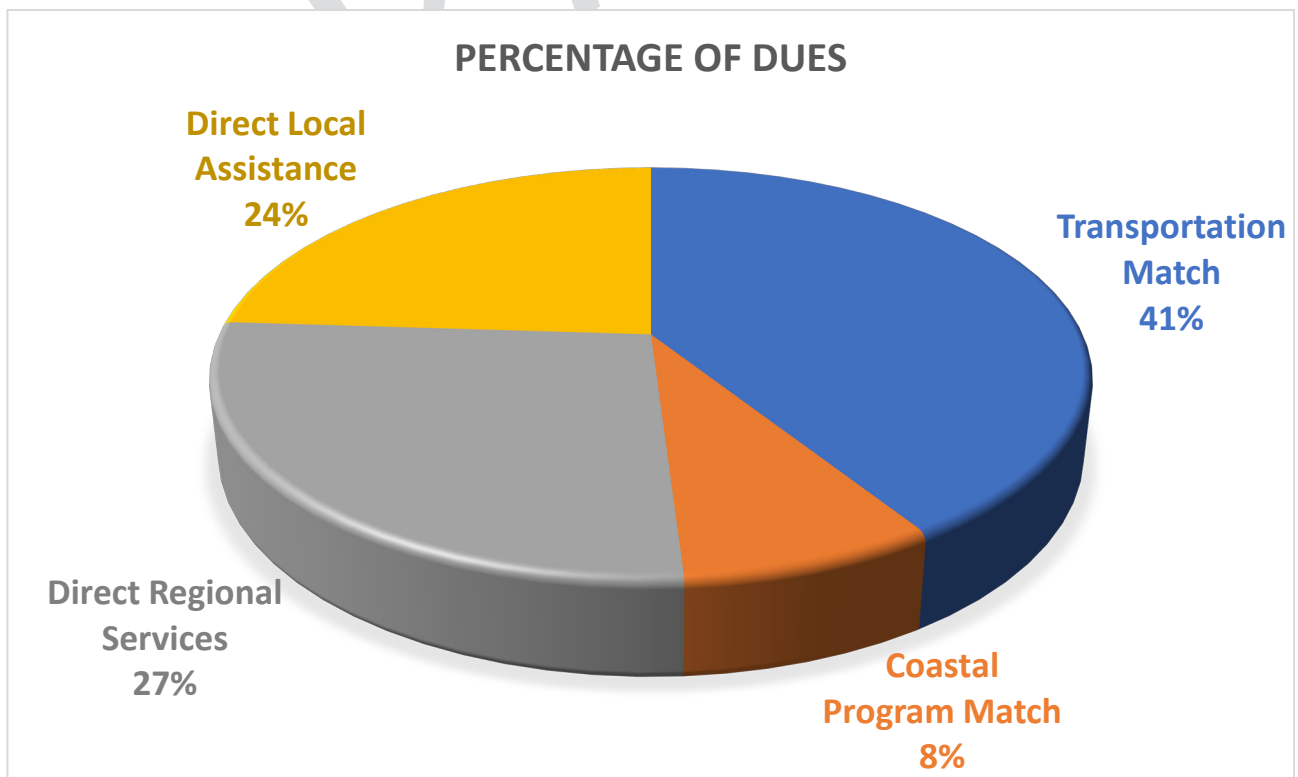
WHERE DO YOUR DUES GO?

The dues are used to support regional planning programs, the largest of which is our transportation planning program. Under federal law and state directive the RPC serves as the Metropolitan Planning Organization (MPO) for the region. A typical distribution of annual dues across our programs is shown in the table below.

The RPC in its role as the MPO is responsible for administering the Federal Transportation Planning process and coordinating it with the States Ten Year Transportation Plan. The funding for this comes from the Federal Highway Administration and requires a nonfederal match. In a typical fiscal year, the RPC uses about 41% of the local dues collected to match the federal funds and support this function. If the dues were not available to support this role, transportation construction dollars would be frozen in the region impacting progress on paving and transportation improvements region wide.

The remainder of the dues are used to support other programs of regional interest. These include the coastal program work, standard map sets, projects of regional benefit like developing model ordinances and our electricity aggregation program. Dues can be used to support a local community for technical assistance. Technical assistance general takes the form of Geographic Information Systems services, review of ordinances, grant writing and other tasks that require limited hours of staff time.

Dues paying members of the RPC are eligible to receive technical planning assistance. In addition, member municipalities may contract the RCP to support larger task items, such as Master Plan updates and other services that require a significant amount of a planners' time and effort to complete. Non-dues paying communities can contract for services at a non-member rate.



What is Your Role?

As a commissioner you will be acting as an agent both of the Rockingham Planning Commission and the municipality you represent. Your role is to act as a liaison between your community and the Commission. We want you to share your knowledge of your community and in turn take information about the RPC back to

your community. Most importantly, you are in a position to recognize opportunities for the RPC to provide information and planning services for the municipality you represent. You will also be asked to contribute to the Commission through decision-making and policy setting.

What kind of Input Will Be Asked of Commissioners?

You are expected to make your opinion heard and support the nature and scope of the Commission's regional and local work programs. Review and approve the Commission's annual operating budget which will be spent to support the work activities outlined in the work program. Provide input on what you think the Commission's policies should be in specific areas like natural resources, land use, local technical assistance, water resources, housing, transportation, recreation, and open space.



Review staff produced plans and reports and communicate that information to your community when needed.

When Do We Meet ?

Commission meetings are usually held on the second Wednesday of each month at the Commission's office or at different communities in the region. We meet on average ten times a year. In addition, an Executive Committee meets monthly and is empowered to make decisions about the operation of the Commission within

the prescribed limits outlined in the by-laws. Some Commission meetings (about four per year) are also designated as MPO Policy meetings at which non-member towns and certain state and federal agencies involved with transportation are included in the decision making.



If you would like to contribute more of your time to the efforts of the RPC, other opportunities by participating in the following committees.

Executive Committee

The nominating committee submits recommendations for Commissioners who have been especially active for their communities to serve on the Executive Committee. The full Commission appoints members of the Executive Committee at the Annual Meeting.

The Executive Committee consists of the officers of the Commission, including Chair, Vice-Chair, Secretary, Treasurer and immediate Past-Chair, as well as eight at-large members, provided that not more than two members shall be from the same community. A quorum consists of five (5) members. The members are nominated by the Nominating Committee and elected annually by the Commission.

The Executive Committee oversees the policy action of the commission and is responsible for



acting for the Commission in the interim between regular meetings. Its authority is established by the Commission to include carrying out the policies of the Commission, acting on personnel changes, taking action on routine monthly financial statements and executing contracts. The Executive Committee shall report all its activities to the Commission at the next regular Commission meeting.

Legislative Policy Committee

The Legislative Policy Committee consists of a Chair, Vice chair and up to 7 members, as appointed by the Executive Committee. The function of the Legislative Policy Committee is threefold: to monitor and recommend positions on proposed legislation that is of specific interest or concern to the Commission based; to develop general Legislative Policies subject to adoption by the Commission; and,

to periodically organize a Legislative Forum on topics of interest to legislators, commissioners and municipal officials. The Committee meets on an as needed basis, at the call of the Chair. The Committee also tracks various legislative bills that may have impacts on RPC's communities or regional planning commission, and provides letter of testimony on some bills.



Regional Impact Committee

The Regional Impact Committee was established to assist in carrying out the requirements of RSA 36:54-58 – Developments of Regional Impact. The purposes of the Regional Impact Committee are: to fulfill the Commission’s responsibilities and obligations under the Developments of Regional Impact statute (RSA 36:54-58); provide timely notice to potentially affected municipalities concerning Proposed Developments which are likely to have impacts beyond the boundaries

of a single municipality; provide opportunities for the Commission and the potentially affected municipalities to furnish timely input to the municipality having jurisdiction; and, to encourage the interests of neighboring municipalities and the region to be considered during deliberations and decision-making. The Regional Impact Committee meetings occur as needed based on the receipt of a notice of regional impact from a municipality.

Regional Master Plan Committee

The Regional Master Plan Committee is responsible for overseeing the development and updating of the comprehensive Regional Master Plan, as defined by RSA 36:47. The Committee consists of at least three members but is open ended in number. Members are appointed the Executive Committee. Meetings are as needed; the committee is required to report annually to the Commission.



Personnel Committee

The personnel committee conducts the annual review and salary recommendations of the Executive Director; establishes and maintains the Personnel policies of the Commission and when needed to coordinate the search for qualified

candidates for Executive Director. The Personnel Committee shall also serve as an appeals body for personnel matters that involve appeals by staff to a decision or action taken by the Executive Director.

Communications Committee

The Communications Committee meets as needed to address the Communication Plan for the RPC. Members discuss community outreach, branding, and the website. The committee welcomes contributions on how to better disseminate information about the RPC to our communities, transit authorities and other agencies.

Ad Hoc Committees

From time to time, Ad Hoc Committees will be established when needed to address concerns such as review of bylaws or strategical planning.

Nominating Committee

A Nominating Committee of five representatives, including the Chair as ex officio, shall be appointed by the Executive Committee of the Commission at least 60 days in advance of the Commission’s Annual Meeting. Each representative of this Committee shall be from a different member municipality. The nominating committee may select one or more candidates

for each office. The report of the Committee shall be distributed to all voting Commission representatives no less than 30 days in advance of the annual meeting. In addition, Nominating Committee may, at its discretion, submit nominations to fill vacancies in standing committees and nominations for Commission annual awards.

The MPO Policy Committee

The MPO Policy Committee is charged with providing policy level recommendations, approvals and endorsements of the Rockingham MPO concerning transportation issues that have a bearing on the MPO’s continued, comprehensive, and coordinated transportation planning process. This includes activities such as:

- Establishing the policy direction of the MPO through its adopted plans and policy statements;
- In cooperation with the New Hampshire Department of Transportation (NHDOT), establishing procedures and requirements whereby Section 112 (PL) and FTA Section 5303 (Metropolitan Transit Planning) funds will be allocated and made available.
- Adopting and amending the Unified Planning Work Program (UPWP), the Long Range Transportation Plan, and the Transportation Improvement Program (TIP);
- Reviewing and commenting on individual projects, programs, plans, and reports relative to the adopted transportation policies and positions;
- Reviewing and endorsing technical reports and studies prepared by the MPO staff or consultants;
- Ensuring compliance with the provisions of the Clean Air Act Amendment of 1990 by making conformity determinations for



MPO TIPs and MPO transportation plans, with assistance from NHDOT.

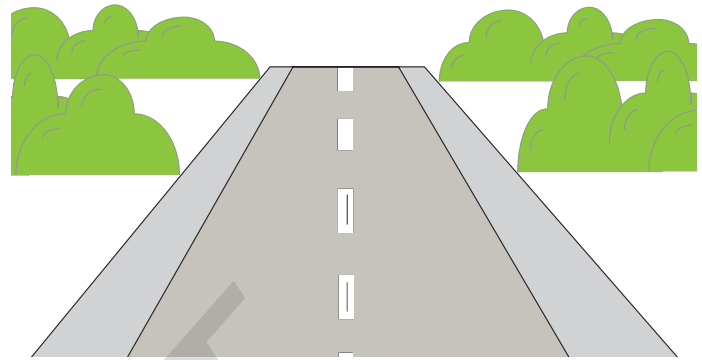
- Adopting and/or revising plans, policies and findings recommended by the Technical Advisory Committee, including technical reports and memoranda;
- Providing a mechanism to facilitate and broaden public involvement in transportation planning and decision making processes.

Voting membership on the Policy Committee includes Planning Commission board members (local representatives appointed in accordance with RSA 36:41 and 36:46), plus representatives appointed by the NHDOT, NHDES (Air Resources Division), COAST, CART, UNH Wildcat Transit, the Pease Development Authority, and RPC non-member communities.

Non-voting members include federal transportation agency representatives, neighboring MPOs/RPCs, non-public transportation providers, and other state and federal transportation officials and other participants. The MPO Prospectus provides a detailed listing of the Policy Committee and Technical Advisory Committee membership broken down by voting and non-voting status.

Transportation Advisory Committee

The Technical Advisory Committee (TAC) is established by the Policy Committee as a standing committee of the MPO. The main purposes of the TAC are to provide technical guidance and recommendations to the RPC staff and the Policy Committee concerning transportation issues that have a bearing on the MPO's 3C's planning process, to review major work products prepared by staff as part of the transportation planning program, to provide a forum for individual members to bring transportation related issues and concerns to the attention of the MPO staff and Policy Committee, and to advise the staff and Policy Committee on major transportation issues in the region. The TAC does not establish policies for the MPO but may make both technical and policy recommendations to the organization.



Membership on the MPO TAC includes representatives from the 26 Study Area member and non-member communities plus RPC, NHDOT, NHDES, COAST, CART, UNH Wildcat Transit, Pease Development Authority, and other state and federal transportation officials and other participants.

WHERE TO FIND MORE INFORMATION: RPC BYLAWS

For more information about the commission, please review the RPC Bylaws. This includes detailed information the RPC's authority and purpose, membership, officers, what constitutes a quorum and voting procedures, election of officers, adoption and amendment of bylaws, meetings and hearing, order of business, finances, committees, employees, and the history of the organization.

You can find the bylaws on our website: [RPC Bylaws](https://www.theRPC.org)



TITLE III
TOWNS, CITIES, VILLAGE DISTRICTS, AND UNINCORPORATED PLACES
CHAPTER 36
REGIONAL PLANNING COMMISSIONS
Regional Planning Commissions

Section 36:46

36:46 Formation of Regional Planning Commissions. –

I. If no regional planning commission exists in any specific planning region as delineated by the office of strategic initiatives, then 2 or more municipalities in said planning region and having planning boards may, by ordinance or resolution adopted by the respective legislative bodies of said municipalities, form a regional planning commission.

II. If a regional planning commission already exists in any specific planning region as delineated by the office of strategic initiatives, then any municipality in said planning region and having a planning board may, by ordinance or resolution adopted by the respective legislative body of said municipality, become a member of the regional planning commission. A regional planning commission may also include municipalities located in an adjacent state.

III. Each municipality which shall become a member of a regional planning commission shall be entitled to 2 representatives on said commission. A municipality with a population of over 10,000 but less than 25,000 shall be entitled to have 3 representatives on said commission and a municipality with a population of over 25,000 shall be entitled to have 4 representatives on said commission. Population as set forth in this section shall be deemed to be determined by the last federal census. Representatives to a regional planning commission shall be nominated by the planning board of each municipality from the residents thereof and shall be appointed by the municipal officers of each municipality. Representatives may be elected or appointed officials of the municipality or county. In any county or counties in which a regional planning commission has been formed, the county may, by resolution of its county commissioners, become a member of said regional planning commission and shall be entitled to appoint 2 representatives on said commission. The terms of office of members of a regional planning commission shall be for 4 years, but initial appointments shall be for 2 and 4 years. In municipalities entitled to 3 or more representatives, initial appointment shall be for 2, 3 and 4 years. Vacancies shall be filled for the remainder of the unexpired term in the same manner as original appointments. Municipalities and counties may also appoint alternate representatives. A representative to a regional planning commission shall, when acting within the scope of his official duties and authority, be deemed to be acting as an agent of both the regional planning commission and of the municipality or county which he represents. In addition, regional planning commissions are encouraged to consult, at their discretion, with agencies and institutions operating within the region whose activities influence planning and development in that region.

Source. 1969, 324:1. 1991, 72:4, eff. July 12, 1991. 2000, 200:3, eff. July 29, 2000. 2003, 319:9, eff. July 1, 2003. 2004, 257:44, eff. July 1, 2004. 2017, 156:64, eff. July 1, 2017.

ROCKINGHAM PLANNING COMMISSION

156 Water Street, Exeter, NH 03833

Phone: 603-778-0885 Email@therpc.org TheRPC.org

Tentative Meeting Topics

February 10

- Highway Safety Improvement Program (HSIP) Safety Targets
- List of Obligated Projects Summary
- Draft Unified Planning Work Program (UPWP)

March 10

- Ten Year Plan Priorities
- Draft UPWP
- Land Program Update

April 14

- Transportation Improvement Plan (TIP)
- Long Range Transportation Plan (LRTP)

May 12

- Draft Budget and Work Program Presentation
- Nominating Committee Report
- Land Use Project Update

June 9

- Annual Meeting
 - Election of Officers
 - Budget and Workplan Adoption
- Guest Speaker

July 8

- No Meeting - Vacation

August 11

- TIP Amendment
- Energy/Environment Project Update

September 8

- Draft Ten Year Plan
- GACIT Update
- Water Resources Update

October 13

- MPO Project Update
- Solid Waste/HHW

November 10

- Legislative Forum



RPC Newsletter - January 2021

2021 Upcoming Projects at the RPC

RPC is working on some exciting new projects coming up in 2021. Below are some of the items we'll be working on but stay tuned for more!

Coastal Innovative Land Use Guide & Sustainability Program Framework

A pending grant award from NHDES Coastal Program (expected in early 2021). RPC is developing user-friendly coastal focused land use guide of model regulations, land development standards and resource protection to inform municipal climate change adaptation and resilience actions.

Model Ordinance for Using Buffers to Protect Drinking Water

In partnership with the Strafford Regional Planning Commission and funded by a NHDES Source Water Protection grant, this project will develop a statewide model buffer regulation and conduct outreach about the benefits of buffers in protecting water quality and drinking water resources.



Hampstead Master Plan

RPC will be working with the Hampstead Planning Board to do a complete update of their Master Plan using ArcGIS StoryMap and strong public engagement. The result will be a visually compelling Master Plan that is a living document that can be implemented by the Town.



North Hampton Parcel Mapping (January 2021 – July 2021)

The RPC will be assisting the Town of North Hampton to update and host their parcels and assessing data online. This will allow a publicly available parcel dataset that is accurate and user-friendly. The portal will also allow future expansion to show other datasets on the parcel base as appropriate.

Seacoast Transportation Corridor Vulnerability Assessment

Working with NHDOT, UNH and the NHDES Coastal Program, RPC is evaluating the impacts to the coastal region's transportation network and infrastructure from future projected sea-level rise. This project will provide recommendations for climate adaptation actions to create a more resilient transportation network. Project funding is from NHDES through NOAA.



In Transportation...

2021 Highway Safety Improvement Program (HSIP) Targets

The MPO must set the annual highway safety performance targets for serious injuries, fatalities, and rates for each of those.



February - March

2022-2023 Unified Planning Work Program (UPWP)

An approved 2022-2023 UPWP is due to NHDOT in early April and will outline the work efforts in the transportation program from July 1, 2021 to June 30, 2023.

March - April

2021 Transportation Improvement Program (TIP)

The RPC is beginning the process of approving a new TIP document that will cover the years 2021-2024



2045 Long Range Transportation Plan (LRTP)

In conjunction with the adoption of a new TIP, the MPO must update the Long Range Transportation Plan to reflect the most recent assumptions about projects and fiscal constraints.

New Staff Member at the RPC!

Regional Planner Maddie Dilonno joined the Rockingham Planning Commission in January 2021. Maddie will be involved with several land use and transportation projects including municipal master planning, land use regulation development and assisting with the Commission's bicycle/pedestrian counting program. Previously, Maddie worked at the Southern NH Planning Commission for three years on a variety of planning projects including local hazard mitigation planning and data collection and analysis for the Commission's traffic counting, road surface management systems and stream crossing inventory programs. Born and raised in Southern Vermont, Maddie moved to New Hampshire in 2013 to attend the University of New Hampshire where she earned a B.S. in Community & Environmental Planning (2017) and later a M.A. in Community Development, Policy and Practice from the UNH Carsey School of Public Policy (2020).



When not working, Maddie can be found enjoying the great outdoors of New Hampshire with her family and friends. Maddie enjoys hiking in the white mountains, running and bicycling on the rail trails near her current residence of Manchester and skiing in the winter. Previously a Summer intern at RPC in 2017, Maddie is excited to be back working on planning projects with the RPC staff.

Funding Available for Non-Motorized Transportation Projects

Think trails, bike improvements, pedestrian safety projects or Safe Routes to School

If your community has been looking for funding for a trail, Safe Routes to School project or other pedestrian or bicycle facility improvement this is a good opportunity. NHDOT has posted full [details on the 4th round of Transportation Alternatives Program \(TAP\) funding](#) on their website. TAP is one of the main sources of federal grant funding to municipalities for pedestrian and bicycle safety projects, and will fund up to 80% of eligible project costs with a required minimum 20% non-federal local match.

The first step for communities is to submit a Letter of Interest, which must be submitted electronically by **Friday, February 5, 2021**. A sample Letter of Interest is available on the [NHDOT website](#) and RPC can assist with project scoping. Please let RPC staff know if your community is thinking of applying. Scott Bogle: sbogle@therpc.org



Request for Proposals: Traffic Counting Services

The RPC is requesting proposals for to secure the services of a qualified Consultant to provide traffic counting services in support of the agency's transportation planning program. The selected vendor must agree to a fixed fee contract to provide a set number of counts over a specified period. The deadline for submission is **February 12, 2021**.



The RPC conducts an annual traffic counting program in coordination with the NH Department of Transportation (NHDOT) as part of the agency's biennial transportation planning program. The RPC counting program is integrated with the NHDOT's such that the results generated from our counts are reviewed and integrated into the NHDOT ADT database and used, in part, to fulfill Federal Highway Administration highway performance monitoring (HPMS) requirements. The annual list of count locations includes single and bi-directional ADT counts as well as vehicle class counts. Traffic count location, type and frequency are defined cooperatively by the NHDOT and RPC to satisfy respective agency needs. [For more information, click HERE.](#)

Congratulations to our intern Anna who will be starting as a Water Engineer at Tighe & Bond after graduating from Tufts University. Tighe & Bond is a firm based in the Northeast, providing engineering, design, environmental consulting, and planning services. She will be working in the water business line on storm water and water infrastructure projects and be based in Westwood, MA.



During her time with us, Anna built a regional sidewalk dataset, assisted RPC with the Seacoast Transportation Corridor Vulnerability Assessment, assisted with the State Bike Ped Plan, assisted with the Stream Crossing Assessment program, and various other GIS and transportation projects. Anna will continue working with RPC through April 2021.

RPC Upcoming 2021 Meetings - Mark Your Calendars

Full Commission	Executive Committee	Transportation Advisory Committee
January 13	January 27	January 28
February 10	February 24	February 25
March 10	March 24	March 25
April 14	April 28	April 22
May 12	May 26	May 27
June 9	July 28	June 24
August 11	August 25	July 22
September 8	September 22	August 26
October 13	October 27	September 23
November 10	November 24	October 28
		December 2



Rockingham Planning Commission
156 Water Street, Exeter, NH 03833
603-778-0885
www.theRPC.org

Want to change how you receive these emails?
You can [update your preferences](#) or [unsubscribe from this list](#).