

RPC MPO Title VI Non-Discrimination Policy

Requirement under:

- Title VI of Civil Rights Act of 1964
- Civil Rights Restoration Act of 1987
- USDOT Regulation 49 CFR Part 21
- Executive Order 12898 on Environmental Justice

Environmental Justice Principles & Title VI of the Civil Rights Act

Key Requirements for MPOs:

- Consider effects of transportation decisions on minority and low-income populations
- Public involvement opportunities
- Gather demographic information
- Minimize or mitigate any adverse impact

Title VI Civil Rights Plan

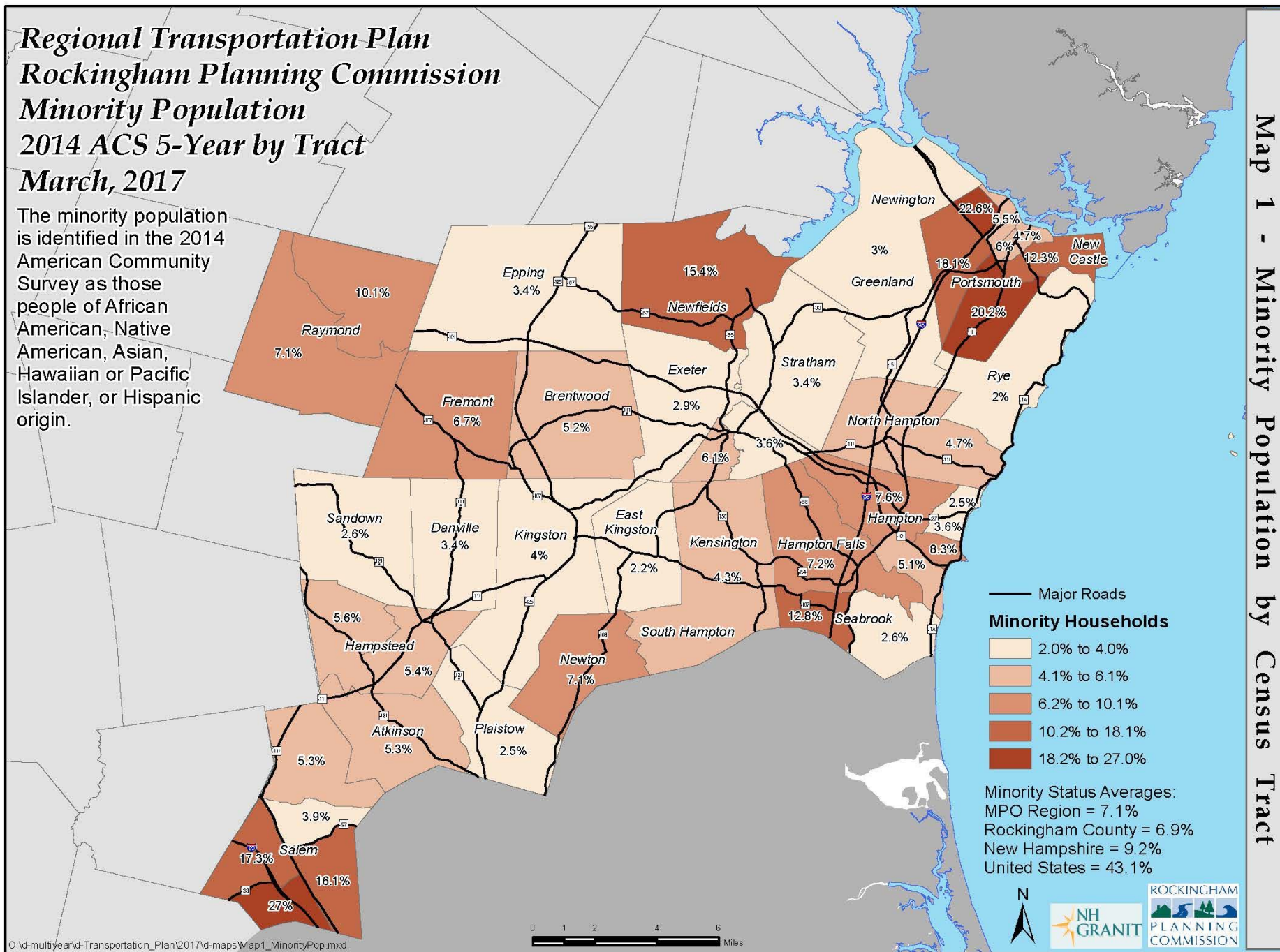
Program Deliverables for MPOs:

- Certifications & Assurances
- Title VI Policy
- Title VI Notice to Public
- Title VI Complaint Procedures & Documentation
- Demographic Analysis
- Document outreach efforts

Regional Transportation Plan Rockingham Planning Commission Minority Population 2014 ACS 5-Year by Tract March, 2017

The minority population is identified in the 2014 American Community Survey as those people of African American, Native American, Asian, Hawaiian or Pacific Islander, or Hispanic origin.

Map 1 - Minority Population by Census Tract



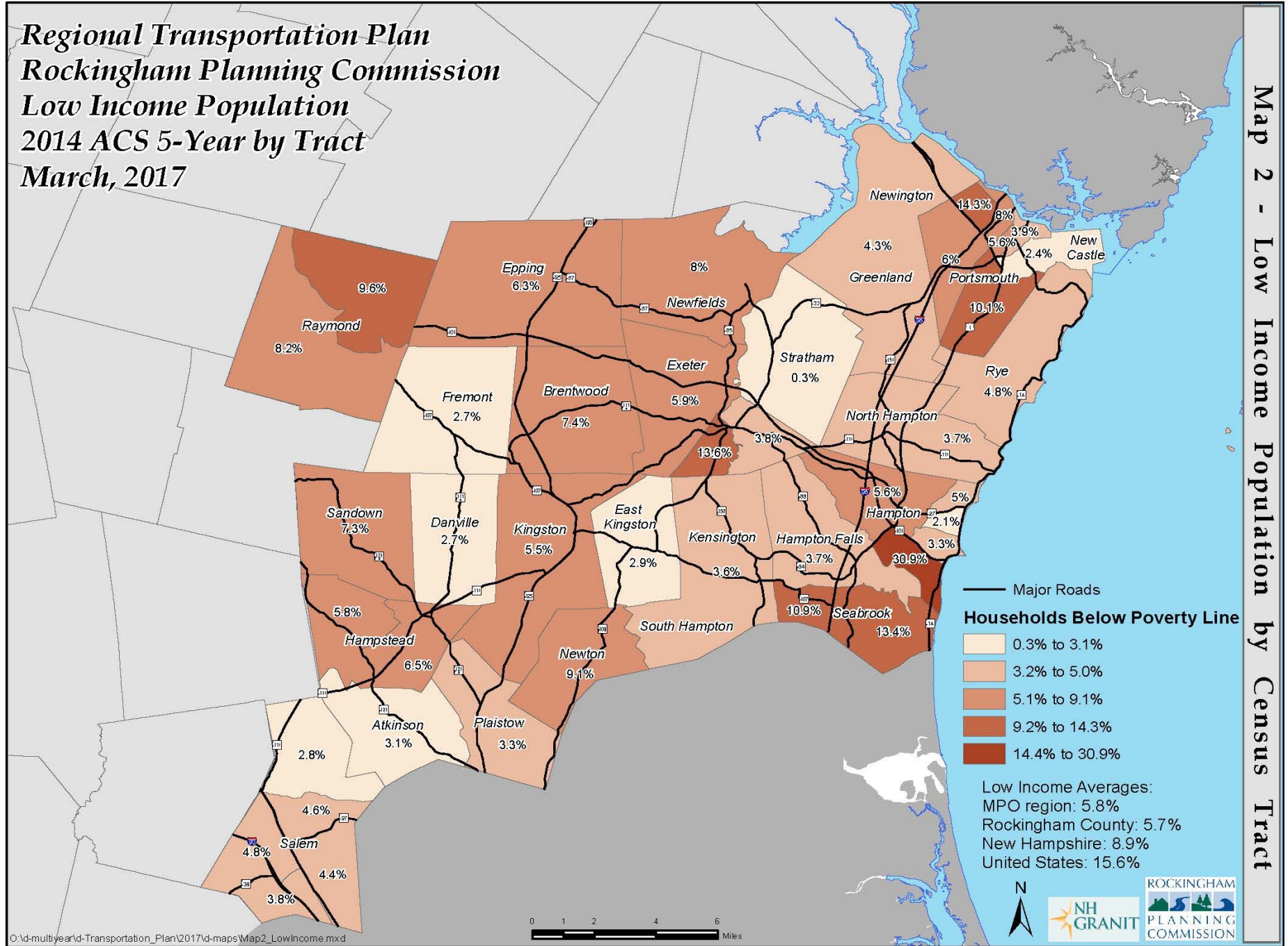
O:\d-multiyear\rd-Transportation_Plan2017\rd-maps\Map1_MinorityPop.mxd

0 1 2 4 6 Miles



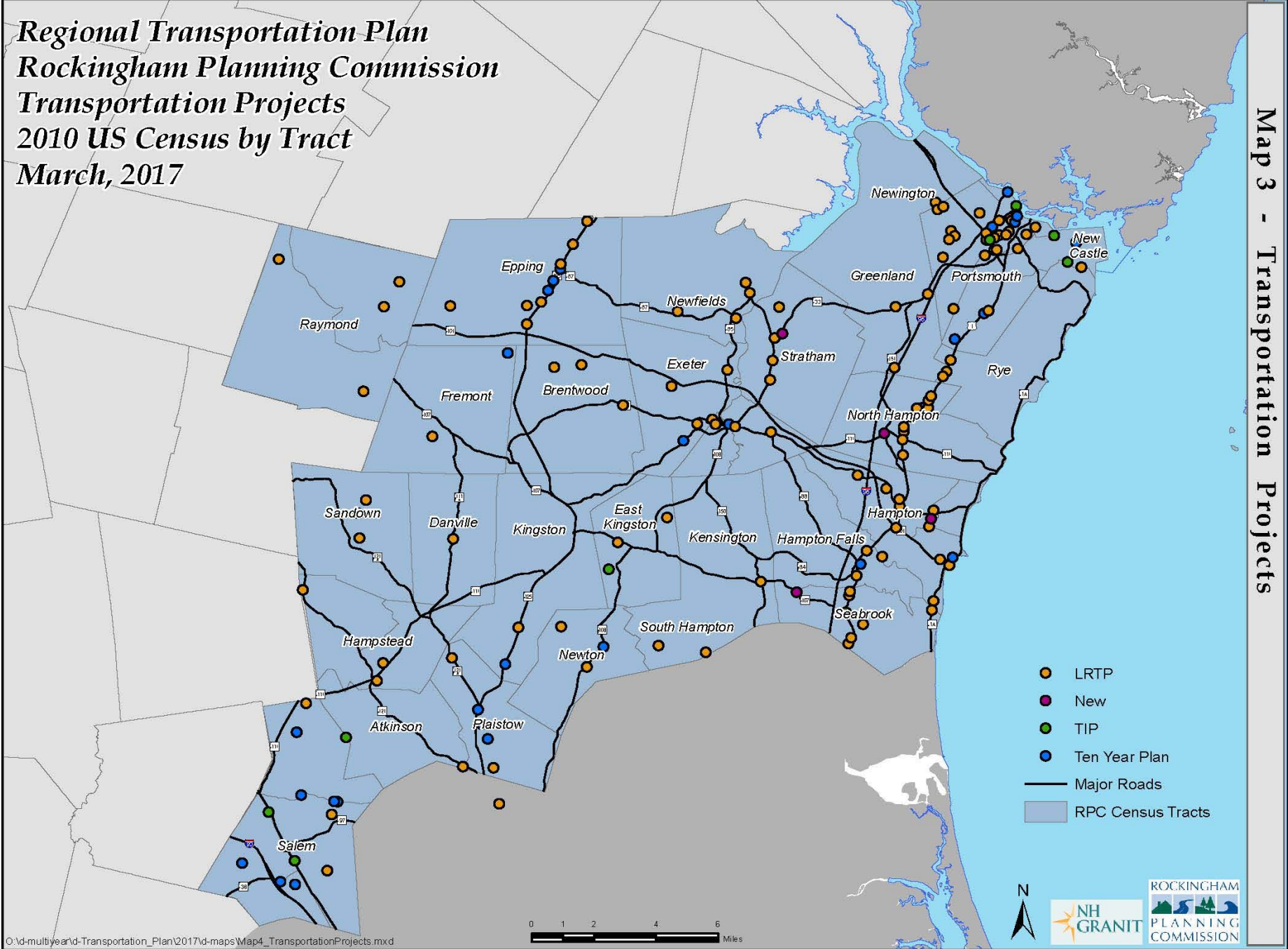
**Regional Transportation Plan
 Rockingham Planning Commission
 Low Income Population
 2014 ACS 5-Year by Tract
 March, 2017**

Map 2 - Low Income Population by Census Tract



**Regional Transportation Plan
 Rockingham Planning Commission
 Transportation Projects
 2010 US Census by Tract
 March, 2017**

Map 3 - Transportation Projects



Languages Spoken in MPO Region

Language Spoken at Home	MPO Region	MPO Region Percent
English Only	169,555	93.6%
Spanish	3,435	1.9%
French	2,312	1.3%
Chinese	655	0.4%
Arabic	599	0.3%
German	471	0.3%
Portuguese	430	0.2%
Other Asian Languages	423	0.2%
Italian	327	0.2%
Polish	326	0.2%
Greek	290	0.2%
Korean	232	0.1%
Tagalog	222	0.1%
Other Indic languages	183	0.1%
Vietnamese	174	0.1%
Hebrew	160	0.1%
Other Indo-European languages	128	0.1%
Other Pacific Island languages	116	0.1%
Gujarati	114	0.1%
Other Slavic languages	107	0.1%

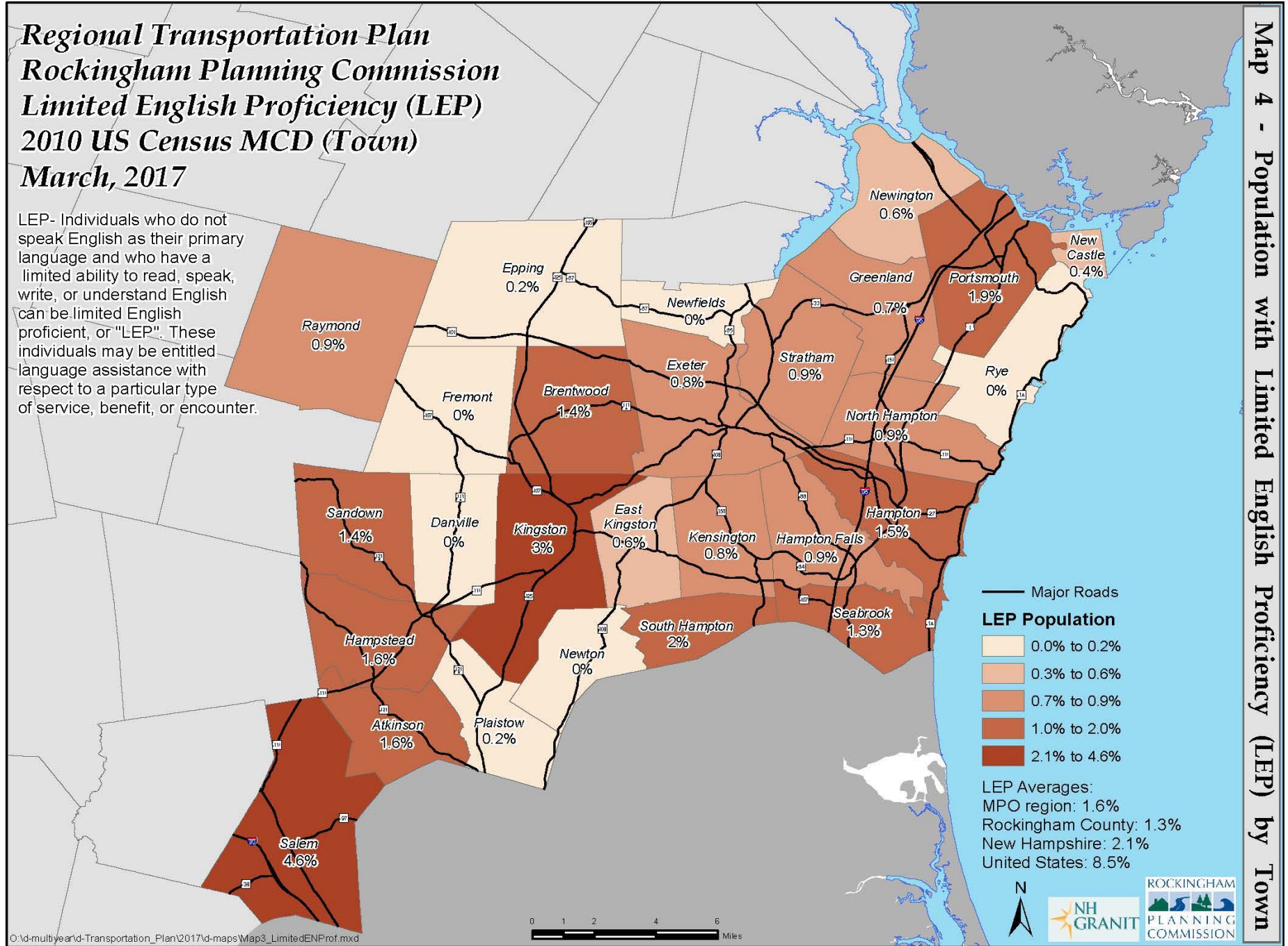
Limited English Proficiency (LEP) Analysis

	Total Region Population	Speak Only English	English Only %
English	181,061	169,555	93.6%

	Speakers of Language	LEP Speakers	% LEP
Spanish	3,435	848	0.5%
Other Indo-European Languages	5,125	968	0.5%
Chinese	655	421	0.2%
Other Asian-Pacific Languages	1,356	590	0.3%
Other Languages	935	99	0.1%
Total for RPC MPO Region	11,506	2,926	1.6%

**Regional Transportation Plan
 Rockingham Planning Commission
 Limited English Proficiency (LEP)
 2010 US Census MCD (Town)
 March, 2017**

LEP- Individuals who do not speak English as their primary language and who have a limited ability to read, speak, write, or understand English can be limited English proficient, or "LEP". These individuals may be entitled language assistance with respect to a particular type of service, benefit, or encounter.



Map 4 - Population with Limited English Proficiency (LEP) by Town

Title VI Civil Rights Plan

Demographic Analysis Findings:

- Minority population up slightly since 2011
- Low-income population up slightly since 2011
- No evidence of discrimination in project programming
- Significant Spanish Speaking LEP population – MPO has taken steps for language accommodation

Title VI Civil Rights Plan Elements

Documenting outreach efforts:

- Regional Coordinating Councils
- Surveys of Welfare Officers
- Surveys of Human Service Agencies
- Surveys of Transit Riders
- Household telephone survey with UNH
- Granite State Future focus groups with NH Listens

