



MPO Long Range Transportation Plan Update 2017

MPO TECHNICAL ADVISORY COMMITTEE
SEPTEMBER 28, 2017



2040 Long Range Transportation Plan

General Progress

- Expanded Performance Based Planning element
- Expanded Energy element
- Distracted driving and safety
- Refined Recommendations
- Integrated maps
- General formatting
- Initiated public comment period



2040 Long Range Transportation Plan



Chapter Structure

Chap 1 – Introduction

Chap 2 - Planning Framework

Chap 3 - Existing Conditions

Chap 4 - Current Trends & Future Conditions

Chap 5 - Constrained Transportation Plan

Chap 6 - Implementation Strategies



Chapter Summaries & Remaining Work



Chap 1 – Introduction

- Plan purpose and scope
- Planning process
- Plan contents

No significant changes

Chap 2 - Planning Framework

- MPO Long Range Goals
- Connections to regional and state framework and Federal requirements

New Material

- *Expanded Performance Measures element*

Chapter Summaries & Remaining Work (cont'd)

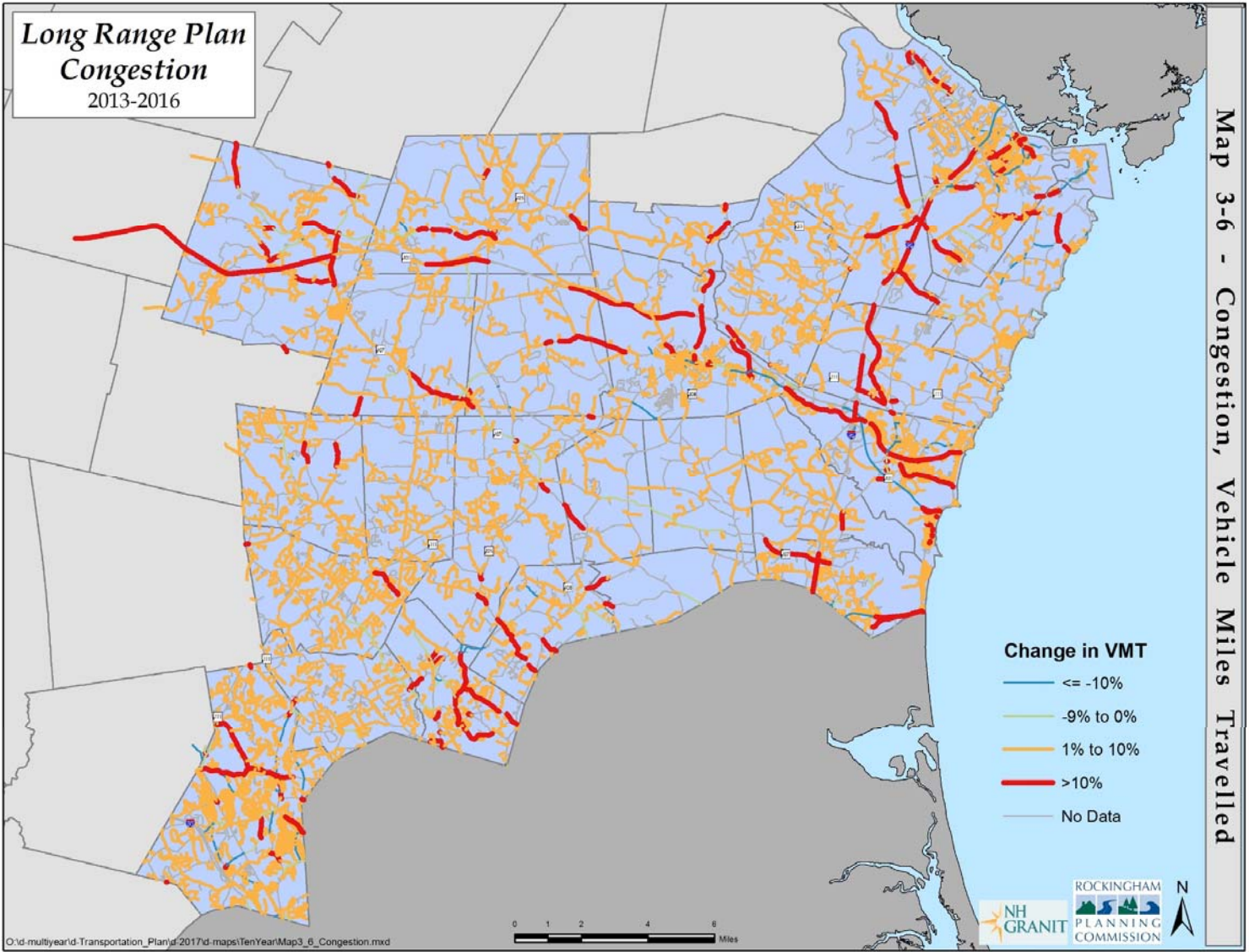
Chap 3 - Existing Conditions

- Background on MPO region
Population, employment, land use, housing, climate change
- System overview by mode

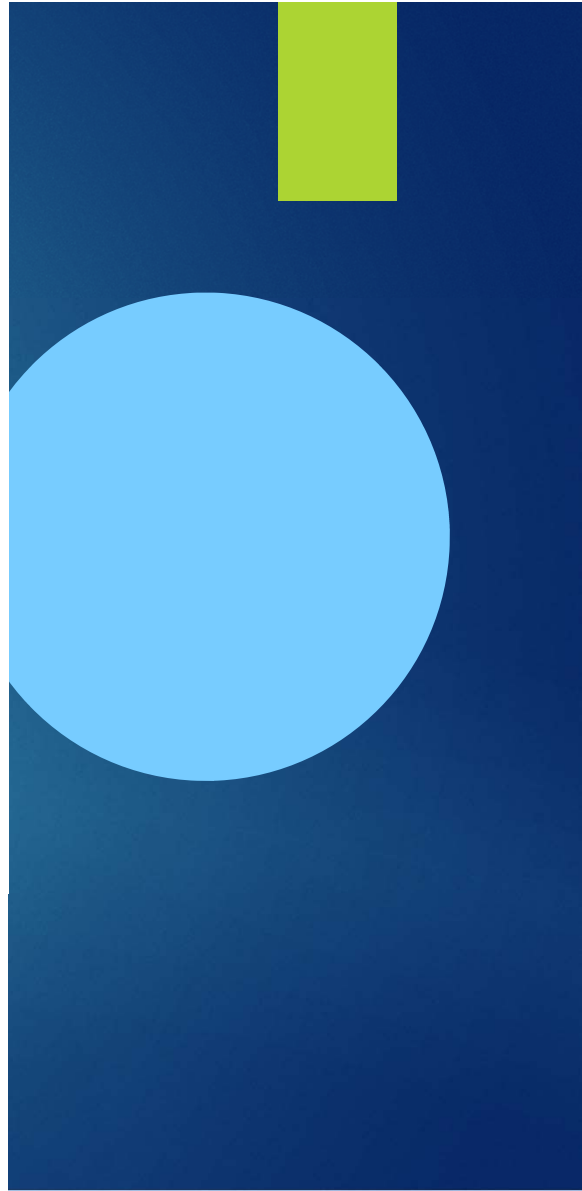
New Material

- *Condensed resiliency section*
- *Added maps (congestion, crashes, pavement condition, transit, bike routes)*
- *Finalized figures and numbering*

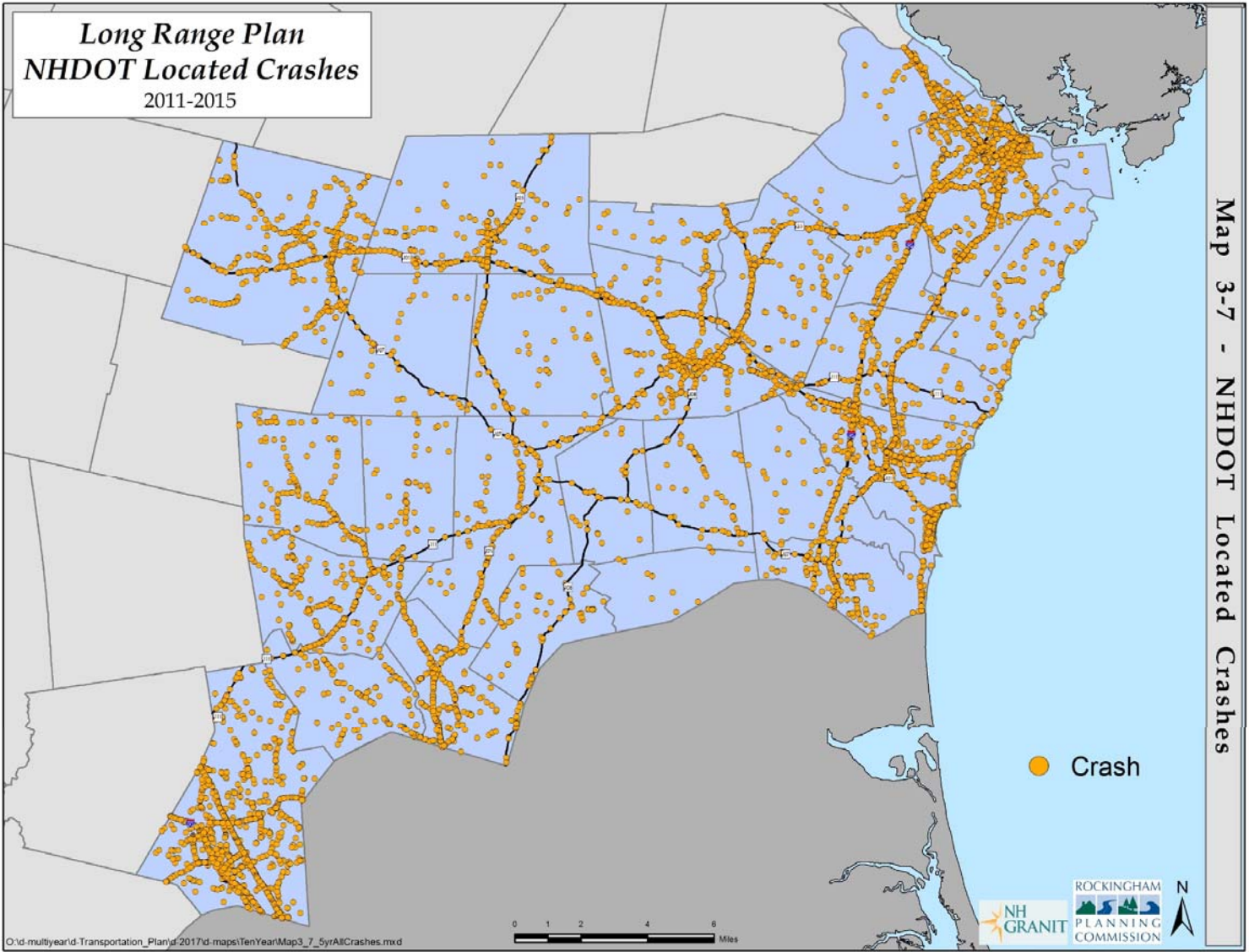
**Long Range Plan
Congestion**
2013-2016



Map 3-6 - Congestion, Vehicle Miles Travelled

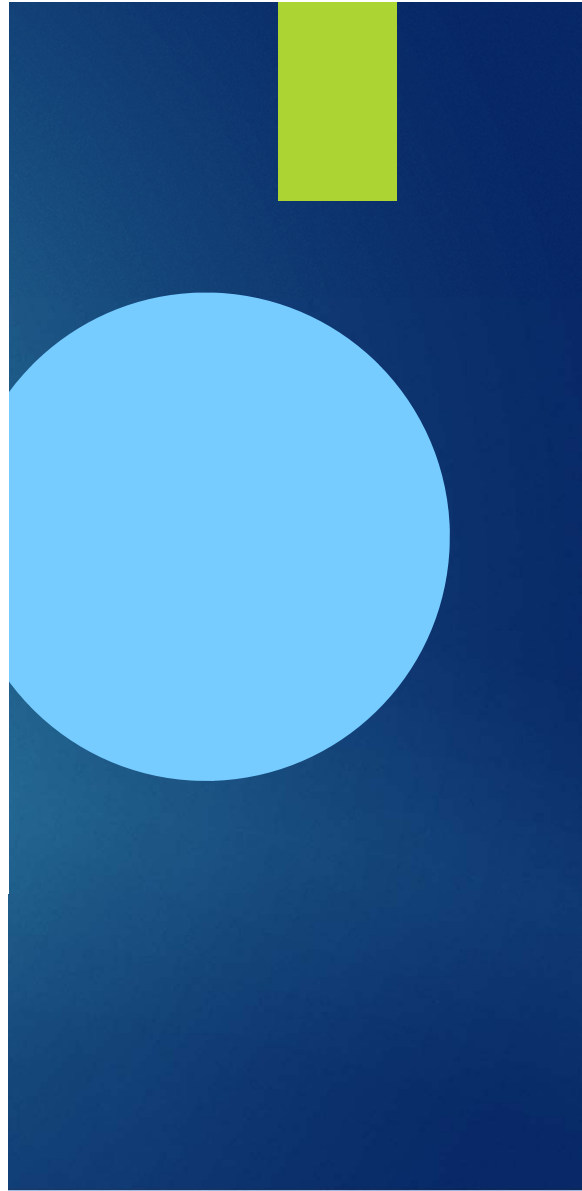


Long Range Plan
NHDOT Located Crashes
2011-2015

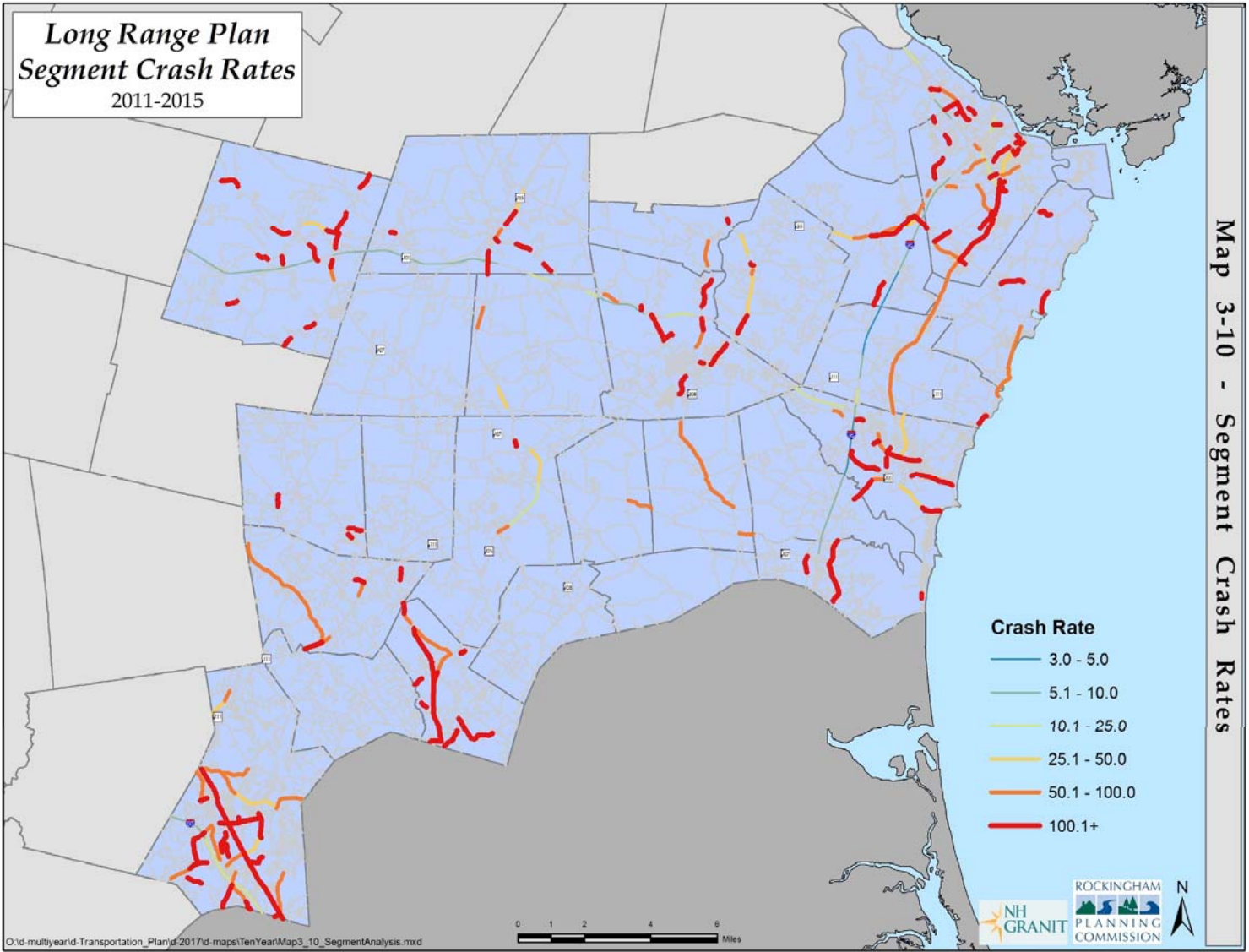


O:\d-multipleid-Transportation_Plan\2017\d-maps\TenYear\Map3_7_5yrAllCrashes.mxd

Map 3-7 - NHDOT Located Crashes



**Long Range Plan
Segment Crash Rates
2011-2015**



Map 3-10 - Segment Crash Rates

O:\d-multiple\Transportation_Plan\2017\d-maps\TenYear\Map3_10_SegmentAnalysis.mxd

