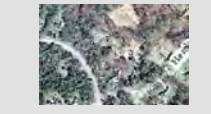
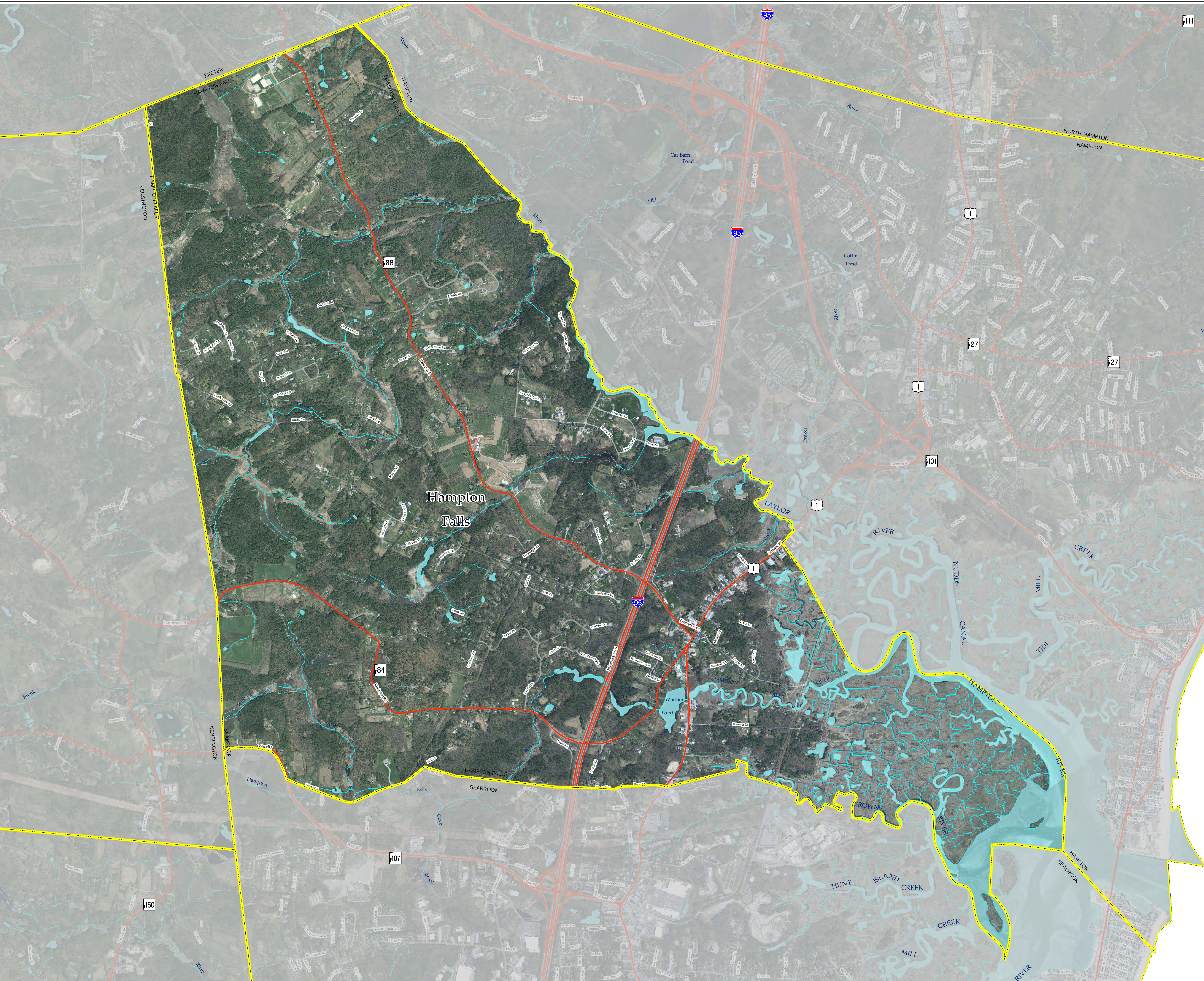


Aerial Photo Map Hampton Falls

Date: Fall 2015



2015 1' Aerial Photo



RPC Standard Legend

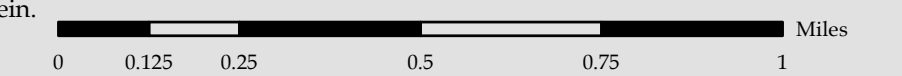
RPC Towns 2013	Shoreline; Stream	State Road
Water Feature	Apparent Wetland Limit	
Tidal Feature	Intermittent Stream	
	Other Surface Water Feature	

2015 NHDOT / USGS 1' Aerial Photo
 The New Hampshire Department of Transportation partnered with the US Geological Survey (USGS) and additional state and federal partners to acquire high resolution, leaf-off, color, aerial photography. This 1' (33m) GSD multispectral digital orthoimagery was compiled to meet a 3.0 meter (9.84') horizontal accuracy at 95% confidence level based on NSSDA testing guidelines. These images were geometrically corrected to achieve a uniform scale. Each frame was adjusted for topographic relief, lens distortion and camera tilt.
 The NH Department of Transportation shall not be held liable for any errors in this data. This includes errors of omission, errors of commission, content errors, and relative and positional accuracy errors in the data. This data should not be construed to be a legal document. Primary sources from which this data was compiled must be consulted for verification of information contained in this data. This data is in the public domain, and may not be resold.

RPC extends every effort to ensure map data is current and complete, however, errors do happen. Please let us know if you spot errors or omissions.

Base Features (transportation, political and hydrographic) were automated from the USGS Digital Line Graph data, 1:24,000, as archived in the GRANIT database at Complex Systems Research Center, Institute for the Study of Earth, Oceans and Space, University of New Hampshire, Durham, NH; 1992-2012. The roads within the Rockingham Planning Region have been updated by NH Department of Transportation through local input by the RPC where available.

Although these data have been processed successfully on a computer system at the Rockingham Planning Commission, no warranty expressed or implied is made regarding the accuracy or utility of the data on any other system or for general or scientific purposes, nor shall the act of distribution constitute any such warranty. It is also strongly recommended that careful attention be paid to the contents of the metadata file associated with these data to evaluate data set limitations, restrictions or intended use. Rockingham Planning Commission shall not be held liable for improper or incorrect use of the data described and/or contained herein.



This mapset was funded with grants from the NH Office of Energy and Planning and the RPC's UPWP grant.

